



**PUBLIC WORKS DEPARTMENT
MEMORANDUM #2014 – 02**

DATE: January 6, 2014
TO: Honorable Mayor Joyce Downing and City Council Members
FROM: John Pick, City Manager 
David H. Willett, Director of Public Works 
SUBJECT: Global Village Academy – Traffic Operations Request (TOR)

BACKGROUND

Northglenn Global Village Academy (GVA) was granted a charter by the Adams 12 Five Star Schools Board of Directors on November 29, 2010 and opened for the 2011-2012 school year with 327 students. Enrollment at GVA-Northglenn is currently 785 students and it is expected to increase to approximately 1000 students for the 2014-2015 school year.

BUDGET/TIME IMPLICATIONS

The proposed school zone design is based on the MUTCD 2009 edition taking into consideration all necessary warrants. Using the MUTCD, staff determined that the sign layout and new speed limit was recommended to properly delineate the school zone. A map showing the new layout is attached to this memorandum.

Summary of changes: The speed limit on Community Center Drive from Malley Drive to Huron Street shall be reduced from 35 MPH to 25 MPH to maintain a continuous 25 MPH from 120th Avenue to Huron Street. The school zone speed during school drop-off and pick-up periods in the AM and PM shall be posted at 20 MPH for the hours of 7:30 to 8:30 and 2:30 to 3:30.

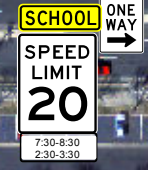
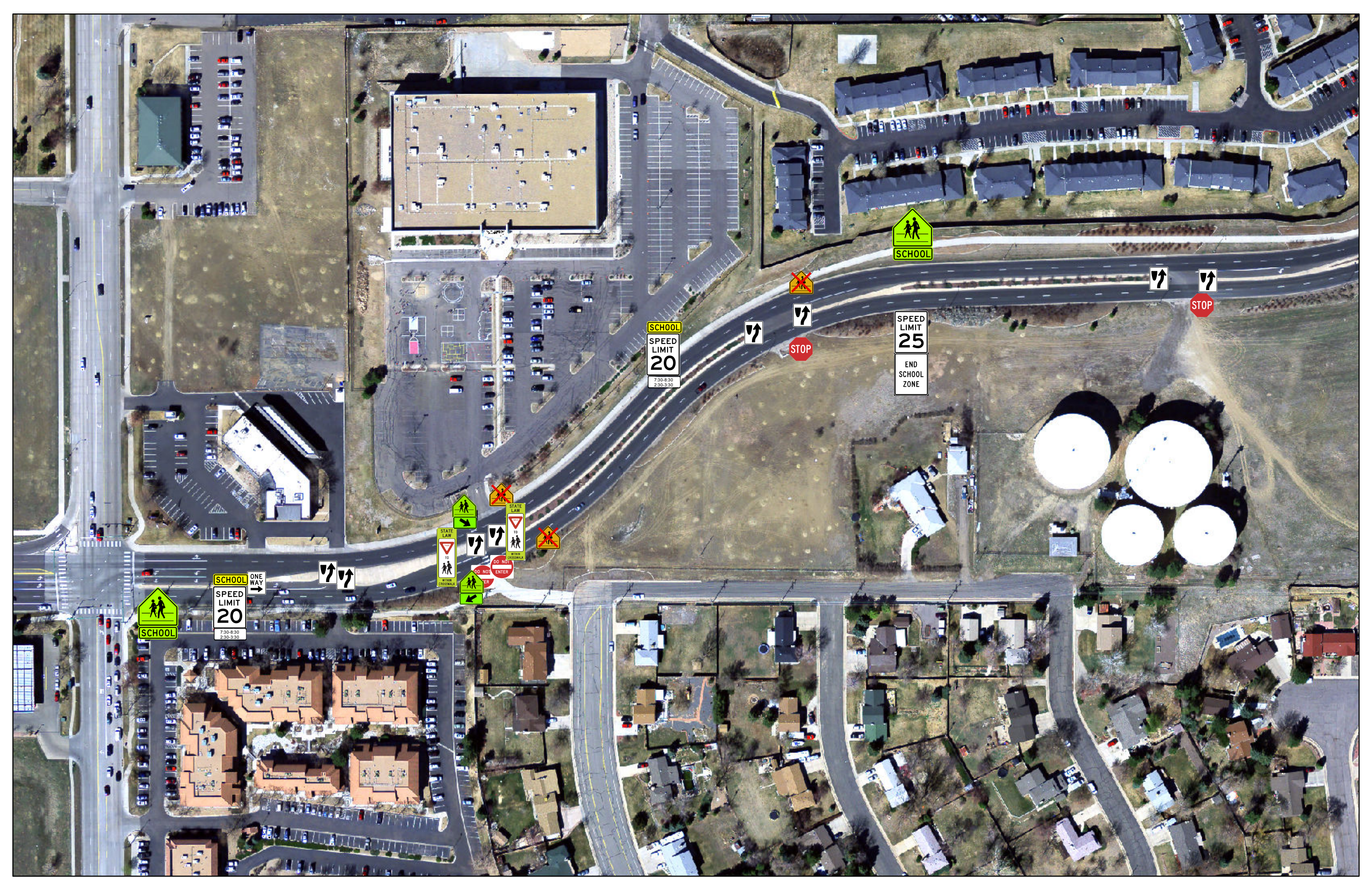
The estimated cost, including labor and materials, to build and install the necessary signs for the new school zone is approximately \$150.00 dollars per sign. A total of 10 new signs are required based on the proposed design for a total of approximately \$1500.00 Dollars.

STAFF REFERENCE

Kent Kisselman, PE, Superintendant of M&O kkisselman@northglenn.org (303) 450-4005

Attachments:

- Traffic Operations Request – ROW signage map.
- Reduce speed limit map to maintain a continuous 25 MPH - 120th to Huron.



Malley Dr

Huron St

Community Center Dr

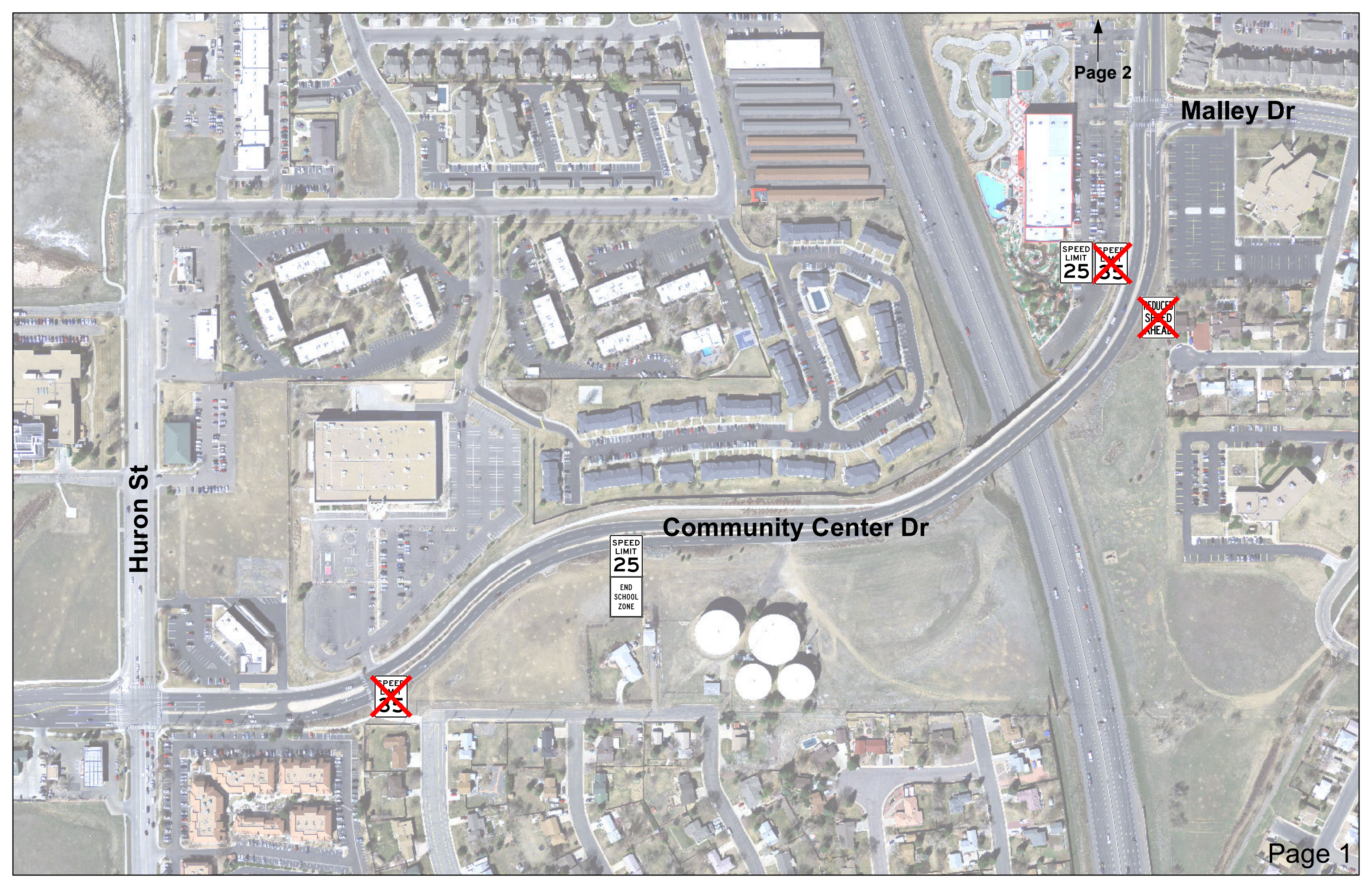
SPEED LIMIT 25

~~SPEED LIMIT 35~~

~~REDUCE SPEED AHEAD~~

SPEED LIMIT 25
END SCHOOL ZONE

~~SPEED LIMIT 35~~





120th Ave

SPEED
LIMIT
25

SPEED
LIMIT
25

SPEED
LIMIT
25

SPEED
LIMIT
25

**Community
Center Dr**

SPEED
LIMIT
25

SPEED
LIMIT
25

SPEED
LIMIT
25

SPEED
LIMIT
25

Malley Dr