

**PARKS, RECREATION & CULTURE MEMORANDUM
#21-2023**

DATE: July 17, 2023

TO: Honorable Mayor Meredith Leighty and City Council Members

THROUGH: Heather Geyer, City Manager *hmg*
Jason Loveland, Interim Deputy City Manager *2*

FROM: Amanda J. Peterson, Director of Parks, Recreation & Culture *APP*
Jesse Mestrovic, Parks & Recreation Project Manager

SUBJECT: Northglenn Playbook Update

PURPOSE

To provide City Council with an update on Playbook, the Parks & Recreation long-range plan, including an overview of the existing conditions report, community survey results and next steps.

BACKGROUND

Per Ordinance No. 1622, series of 2012, the City's Parks & Recreation Master Plan is required to be reviewed on an annual basis and updated no less than every five years "to achieve an equitable balance, within reason, of parks, programs and facilities within the city."

The City's first comprehensive Parks & Recreation Master Plan was completed in 1986, followed by the adoption of a 10-year implementation plan in 1987. All updates to that original plan have been made in-house, and subsequently approved by the Parks & Recreation Advisory Board and City Council. The most recent update of the plan was approved in 2017.

In September 2022, Moore Iacofano Goltsman, Inc. (MIG) was selected to complete an update to the plan, which has been named Playbook. Playbook will serve as a guiding document for capital improvements and programming for the next 10 to 15 years.

UPDATE

Since the start of the project, the MIG team has worked with staff and subconsultants to develop and complete the statistically valid survey, compiled data to create accurate benchmarks for comparison purposes, and updated profiles for each park in the City's system.

The team mailed 8,917 surveys and postcards to a random sample of Northglenn residents, inviting them to participate in the survey on paper or online. The survey was available in English and Spanish. In addition, an open link was provided to allow for additional people to self-select to respond to the survey. Approximately 300 responses were received through the random sample, which provided statistically valid results. An additional 135 responses were received through the open link; these responses were similar in nature to the random sample results and were combined for purposes of analysis. The full survey report is included as Attachment 2.

The team selected five communities to use as benchmarks. These include two in Colorado – Erie and Englewood, as well as Lynwood, Washington, Deer Park, Texas and Grove City, Ohio.

They were selected because they are similar in size, population and/or community demographics. These communities help provide comparison points to the park and recreation amenities and programs in Northglenn. A chart outlining the comparison points is included as Attachment 3.

Park profiles are currently under development; a draft document is included as Attachment 4. This document will continue to be updated throughout the project.

The MIG team will be present at the study session to provide an overview of:

- What has been learned thus far through the survey
- Focus groups and benchmark communities
- Seek feedback regarding the project goals, the department mission and vision, and initial observations
- Share how these components each help formulate the final plan.

This information was also presented to the Parks & Recreation Advisory Board at their meeting on July 13.

NEXT STEPS

In the coming months, additional focus groups will be held to further understand community needs and priorities, and staff will complete the financial analysis with the MIG team. This information, along with feedback from City Council and the Parks & Recreation Advisory Board, will guide the development of the implementation and action plan, including draft recommendations, policy suggestions, prioritizations, and financial implications.

STAFF RECOMMENDATION

This item is for informational purposes only.

BUDGET/TIME IMPLICATIONS

The next update is scheduled for fall 2023; this will be an opportunity for City Council and the Parks & Recreation Advisory Board to assist in the prioritization of recommendations that are developed as a part of the plan.

The project is on schedule for completion in the first quarter of 2024. The cost for the project is \$139,970, with funds coming out of the General Fund.

STAFF REFERENCE

If Council Members have any questions, please contact Amanda Peterson, Director of Parks, Recreation & Culture, at apeterson@northglenn.org or 303.450.8950.

ATTACHMENTS

1. Presentation
2. Survey Report
3. Benchmarking
4. Park Profiles (will be added after 7/12/23)

A large, stylized letter 'N' composed of three parts: a red roof-like shape on top left, an orange house-like shape on the bottom left, and a green and blue tree-like shape on the right.

Northglenn

PLAYBOOK

A green arrow that starts under the 'O' of 'BOOK' and curves upwards and to the right, ending under the 'K'.

Parks, Recreation & Culture
Long-Range Plan

Today's Agenda

- Process Update
- **Existing Conditions and Needs Highlights**
- Next Steps





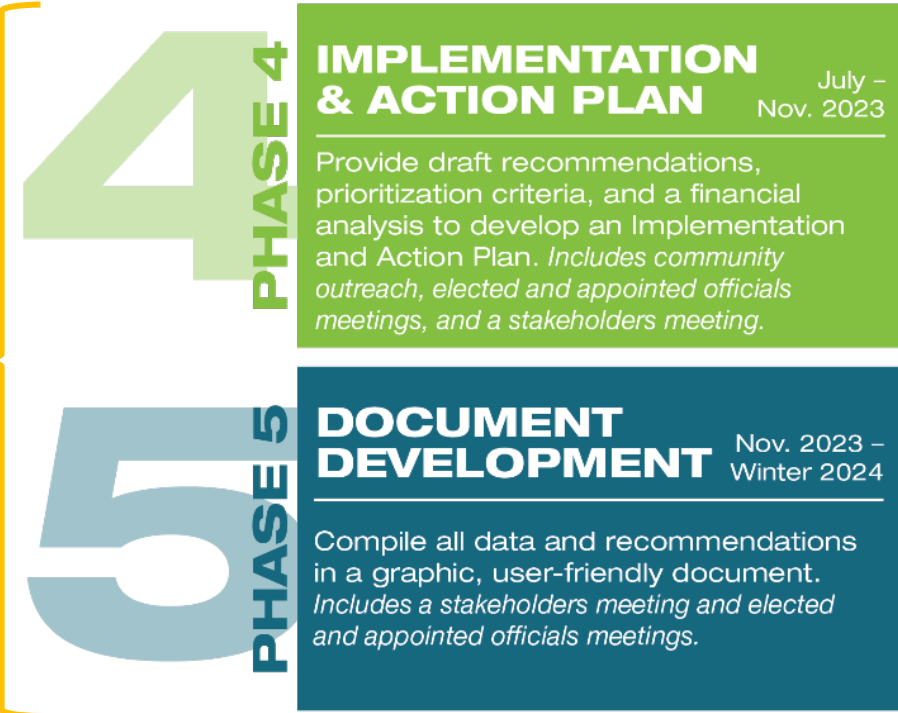
Process Update

Where We Are in the Process

Discussing Today



Next Steps



PUBLIC ENGAGEMENT

Engagement to Date

- Online Survey
 - *Statistically Valid and Open Link*
 - *435 responses*
- Stakeholder Focus Groups
 - *March 2*
- Community Workshop
 - *April 3*
- Pop-Up Engagement
 - *Youth Theater - April 28*
 - *Derby Day - April 29*
 - *Food Truck Carnival - May 20 & 21*





Existing Conditions and Needs Highlights

Community Feedback Highlights

- Safe and connected trail improvements
- Protecting or enhancing natural areas and open space
- More activities in parks
- Increased safety and security
- More recreation programming variety
- Frequency and variety of Northglenn events
- Continued improvements to existing amenities
- Recreation center operational improvements

Draft Mission and Vision

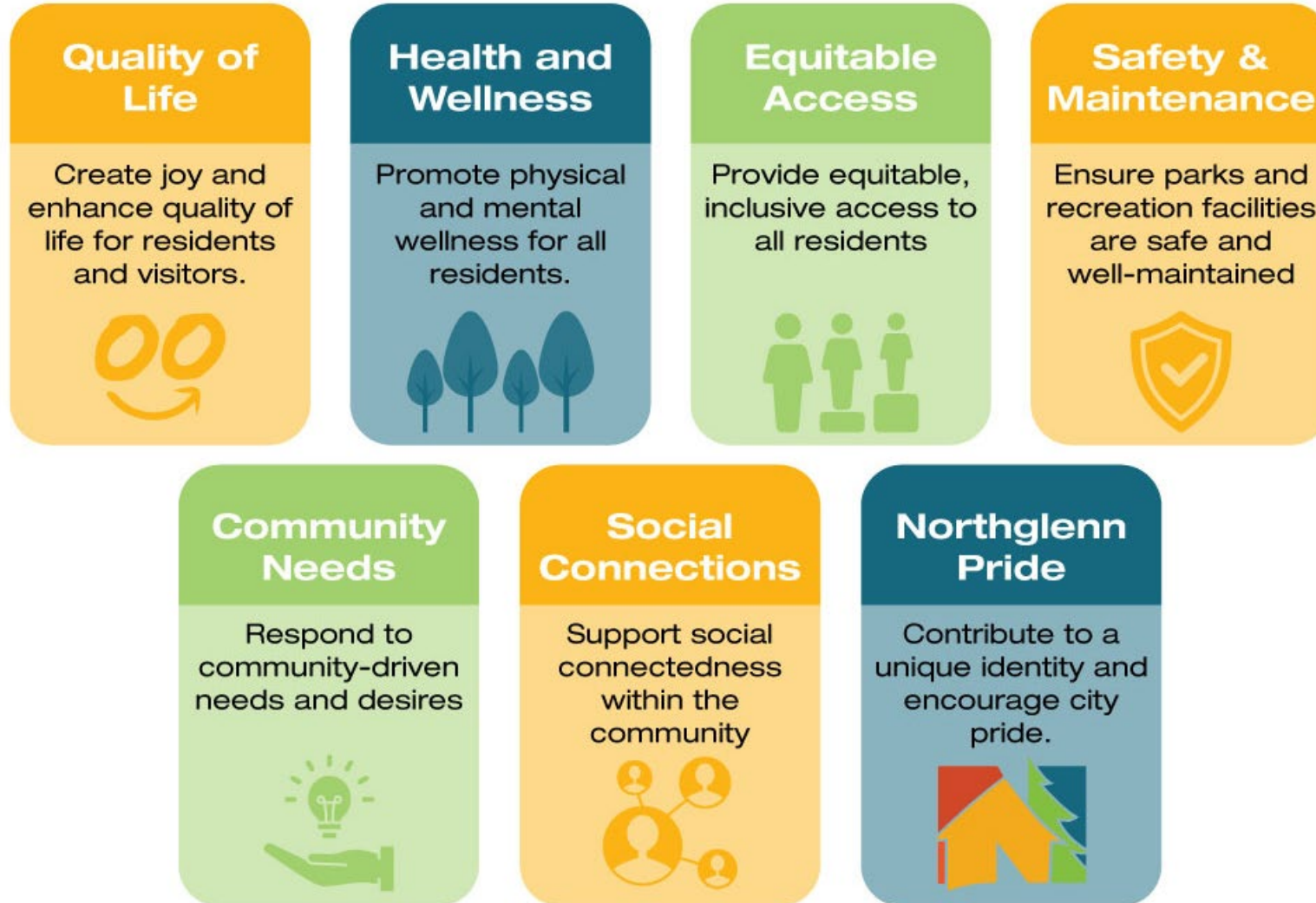
MISSION:

“The City of Northglenn’s Department of Parks, Recreation & Culture’s mission is to promote health and wellbeing, enhance the community’s quality of life, and provide opportunities for community interaction through inclusive and high-quality recreation programs, parks, facilities, and special events.”

VISION:

Parks and recreation facilities and programming help make Northglenn a great place to live and contribute to a healthy and vibrant community. Community connections are built through diverse recreational activities that ensure accessible, welcoming, and safe experiences for all residents and participants.

Draft Goals

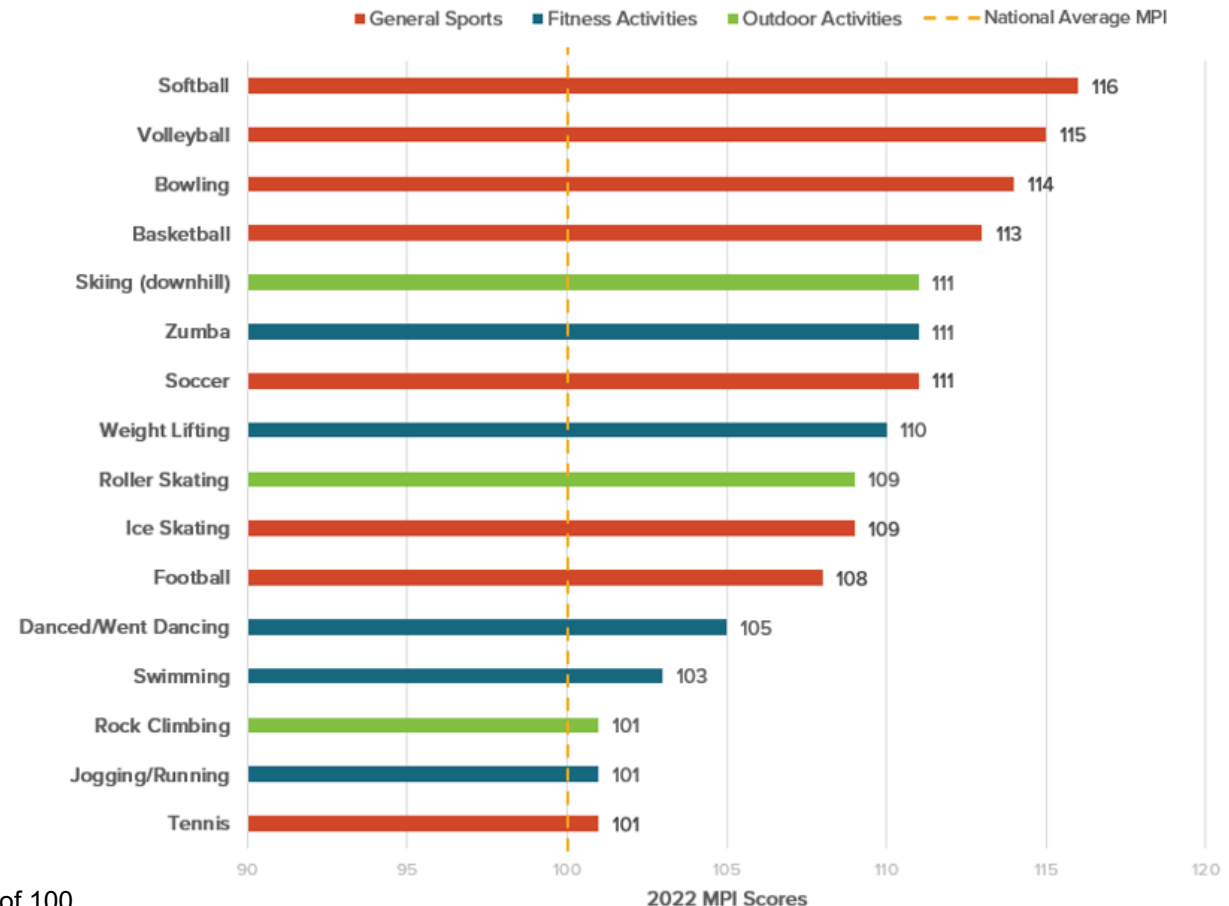


Other Sources

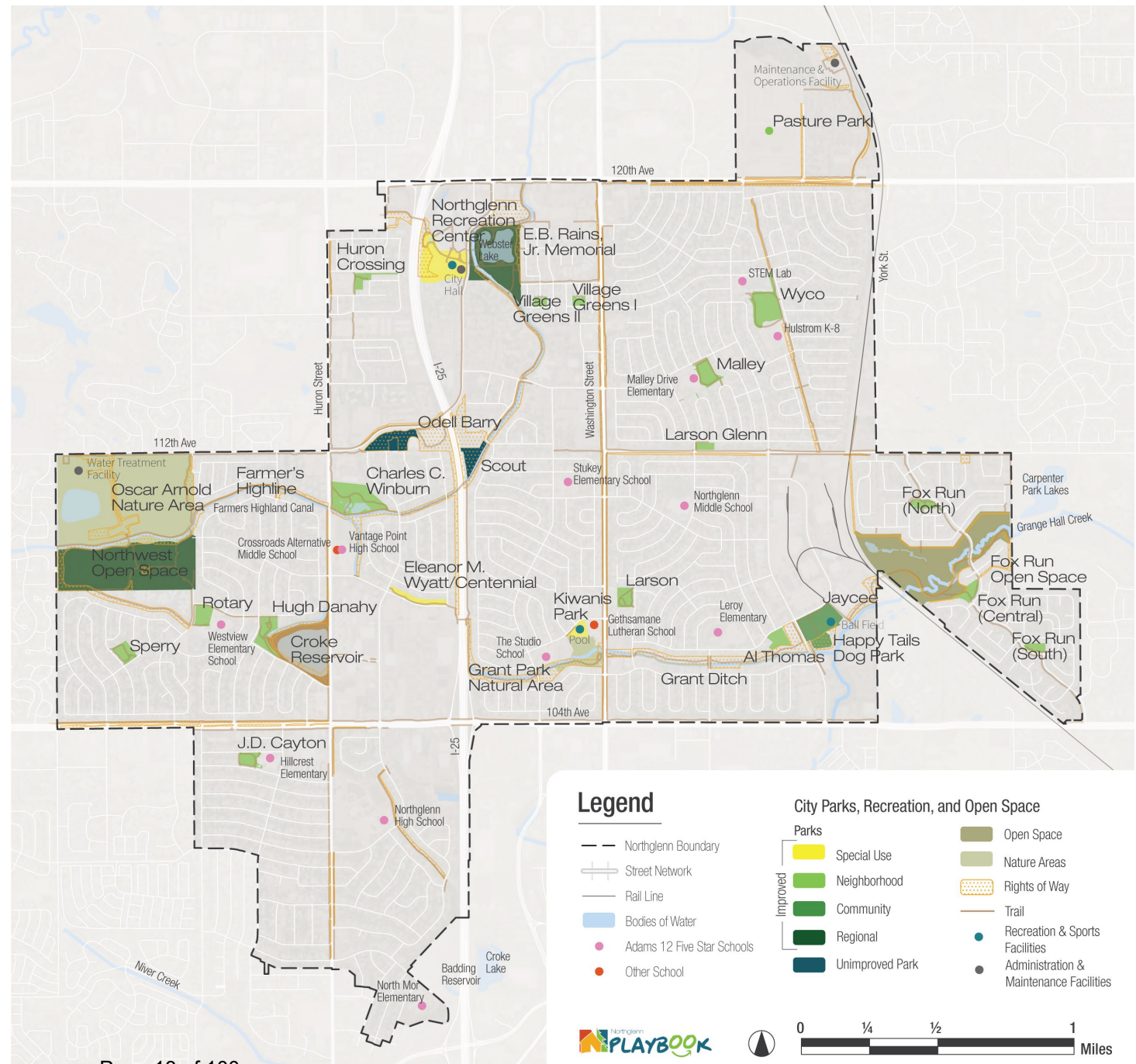
- Benchmarking
 - *System Statistics*
 - *Budget*
 - *Population per Facility*
 - *Staffing*
 - *Operated Buildings*
- National Trends
 - *Pickleball*
 - *Mindfulness, Nutrition, and Stress Reduction*
 - *Climate Change*
 - *Decline in Youth Sports Participation*
 - *Dog Parks and Ownership*

- Market Support

- *16 activities scored higher than national average*



Existing System Mapping



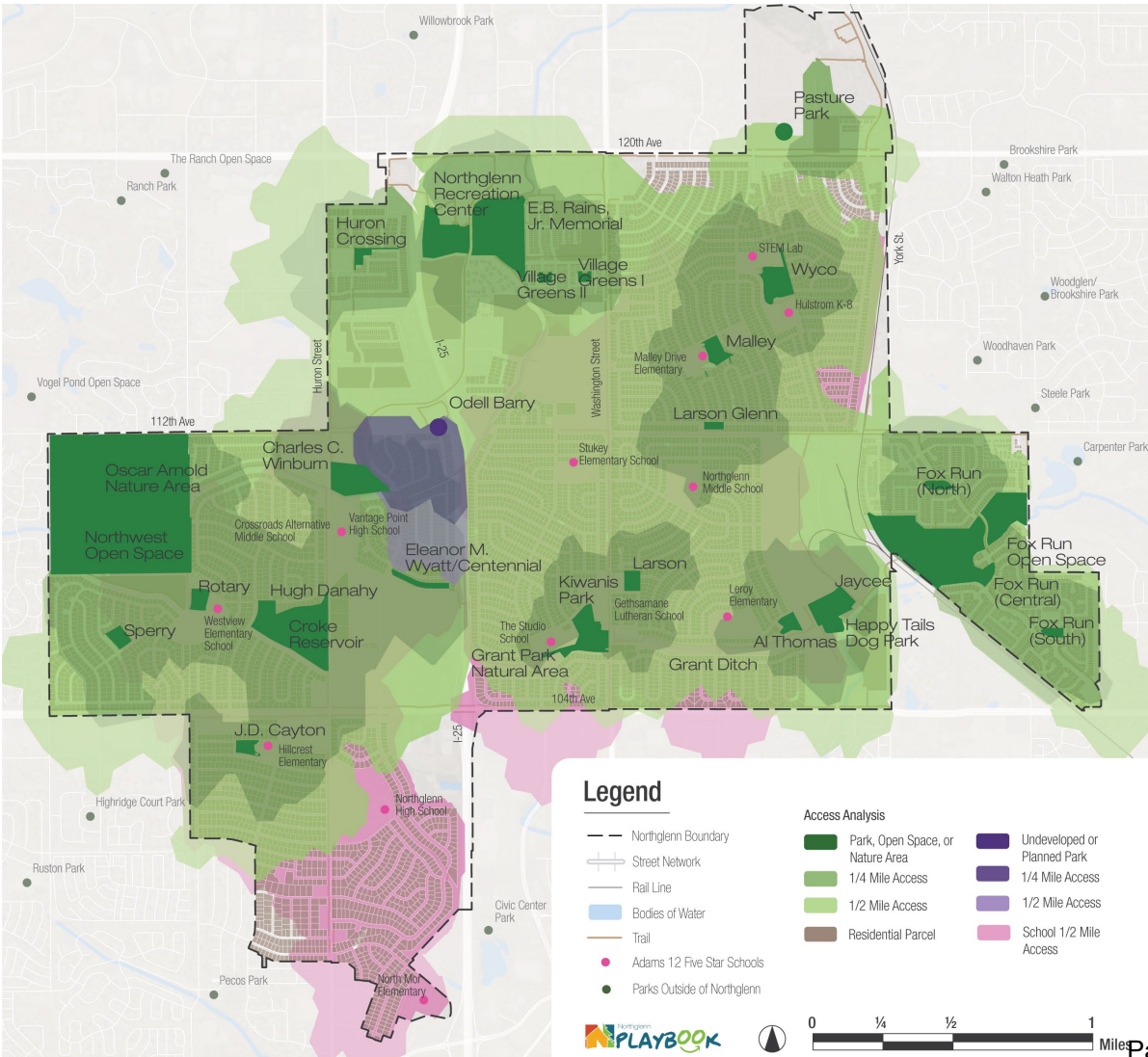
PARKS AND OPEN SPACE

Inventory *(under development)*

Classification	# of Sites	Total Acres	Examples
Regional	2	79.6	E.B. Rains Jr. Memorial Park, Northwest Open Space
Community	2	13.9	Jaycee Park and Happy Tails Dog Park, Hugh Danahy Park
Neighborhood	17	55.4	Larson Glenn Park, Village Greens, Huron Crossing
Special Use	3	18.69	Northglenn Recreation Center, Kiwanis Park and Pool, Eleanor M. Wyatt/Centennial Park and Sculpture Garden
TOTAL	24	167.5	

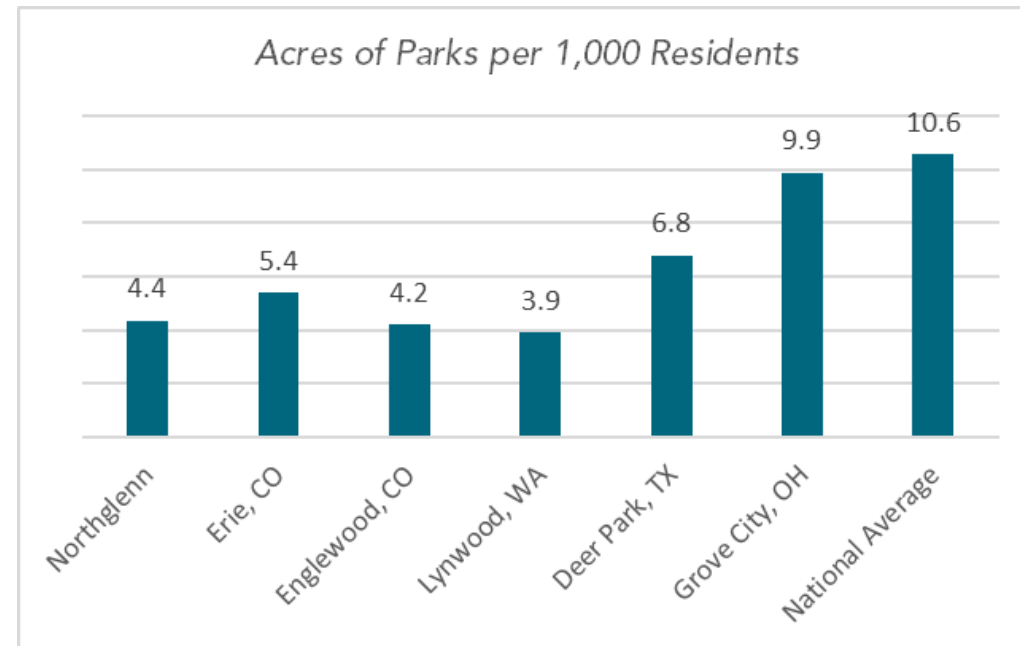
Classification	# of Sites	Total Acres	Examples
Undeveloped Park	2	9.4	Odell Barry Park, Scout Park
Open Space	2	7	Grant Park and Ditch, other trail corridors
Nature Area	3	158.9	Croke Reservoir Nature Area, Oscar Arnold Nature Area, Fox Run Nature Area
TOTAL	7	175.3	

PARKS AND OPEN SPACE Analysis



Park Type	Current Acres	Existing LOS (acres/1,000 residents)	NRPA LOS Average (acres/1,000 residents)	Park Land Deficit (total acres)	
				Existing (2022)	Future (2040)
All Park Land	342.8	9.0	10.6	61.12 deficit	83.32 deficit

Sources: City of Northglenn, NRPA, U.S. Census, DRCOG



PARKS AND OPEN SPACE

Top Needs

- Maintain and enhance existing open space and nature areas
- More gathering spaces within parks
- Unique park features that contribute to identity
- Increased park maintenance

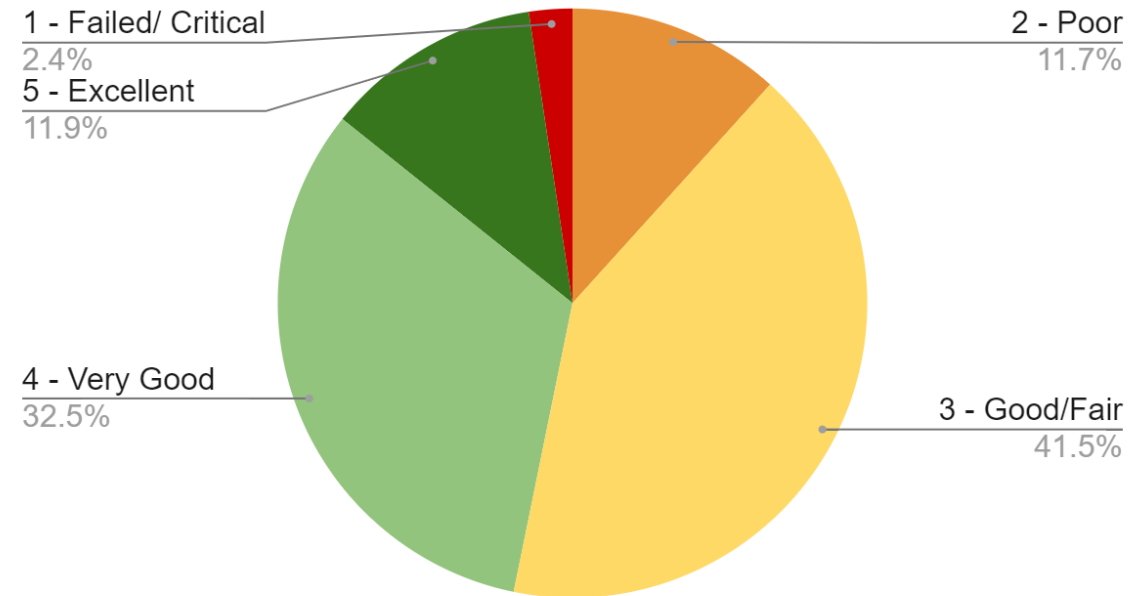


AMENITIES AND MAINTENANCE Assessment

- **Assessment Findings**
 - Parks are generally lacking **shade**
 - Many parks do not provide **parking** or designated on-street parking
 - Parks are generally missing **unique activities** that add to their identity and can be used to draw users to the park
 - There are **limited communal and gathering spaces** in Northglenn parks for group use

- **Condition of Amenities**

Count of CONDITION



AMENITIES AND MAINTENANCE Assessment

Facility Type	City of Northglenn		NRPA Metric (Residents per facility)	Difference from Metrics	
	Current Inventory	Current Residents per Facility		Existing (2022)	Future (2040)
Playgrounds	16	2,540	3,028	3 surplus	3 surplus
Basketball courts	9	4,234	7,117	4 surplus	3 surplus
Rectangular fields: multi-use	14	2,722	4,947	6 surplus	6 surplus
Tennis courts (outdoor)	5	7,621	5,815	2 need	2 need
Pickleball (outdoor)	4	9,527	9,257	adequate	adequate
Diamond fields	7	5,444	8,509	3 surplus	2 surplus
Community gardens	2	19,053	26,741	1 surplus	adequate
Dog parks	1	38,106	28,000	adequate	adequate
Skate Parks	1	38,106	32,000	adequate	adequate

Sources: City of Northglenn, NRPA, U.S. Census, DRCOG

- Community Feedback
 - Maintaining existing amenities top priority
 - Desire for extraordinary play features, challenge elements, community gardens, lighting, disc golf, pickleball, bike park, ice skating

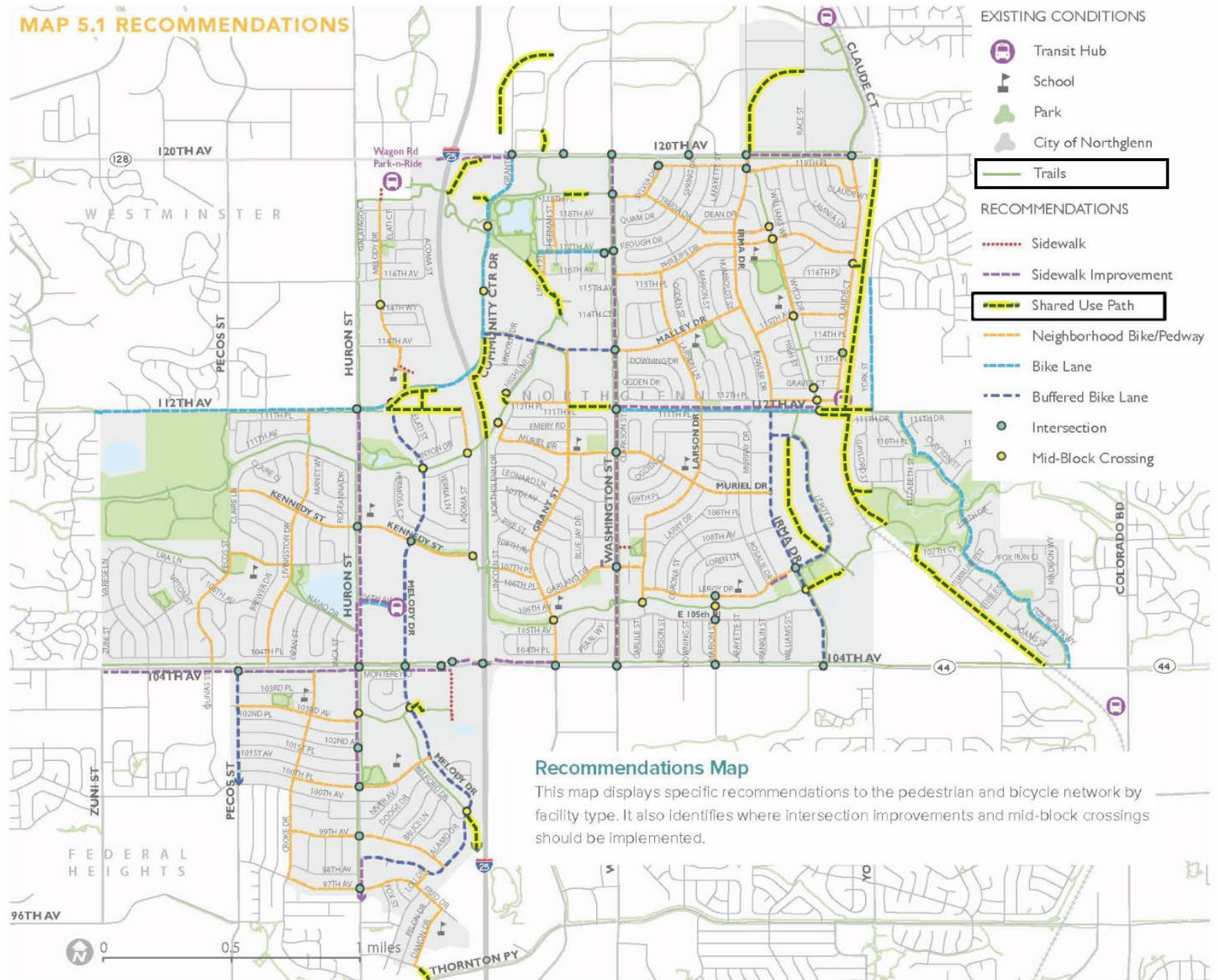
AMENITIES AND MAINTENANCE Top Needs

- Repair and maintain existing amenities
- Add unique and interactive amenities
- Focus on outdoor recreation opportunities
- Lighting and increased security



TRAILS Analysis

- Connect Northglenn
- Community Feedback:
 - Safe and connected access using trail system
 - Wayfinding and signage improvements



TRAILS

Top Needs

- Additional off-street connectivity through Northglenn and to destinations
- Improve/add signage and wayfinding
- Safe and improved street crossings
- Enhance I-25 crossings (including pedestrian tunnel)



PROGRAMMING Inventory

Program Area	Age				Seasons	
	Youth	Teens	Adult	Older Adult	Spring/Summer	Fall/Winter
Acting and Dance Classes	•	•	•	•	•	•
Theater	•	•	•	•	•	•
Group Fitness			•	•	•	•
Personal Fitness		•	•	•	•	•
Club Sports	•	•	•	•	•	•
Judo	•	•	•	•	•	•
Swimming Lessons	•				•	•
Competitive Swim	•	•			•	•

- Community Feedback
 - Variety in programming options
 - More activities targeted for adults
 - Capacity of some existing programs
 - Increased communications

PROGRAMMING

Top Needs

- More adult-focused programming options and times
- Recreation program communications and limit barriers to access
- Higher frequency and variety of community events
- Expand capacity for youth sports and activities





Next Steps

Next Steps

PHASE 4

IMPLEMENTATION & ACTION PLAN

July –
Nov. 2023

Provide draft recommendations, prioritization criteria, and a financial analysis to develop an Implementation and Action Plan. *Includes community outreach, elected and appointed officials meetings, and a stakeholders meeting.*

PHASE 5

DOCUMENT DEVELOPMENT

Nov. 2023 –
Winter 2024

Compile all data and recommendations in a graphic, user-friendly document. *Includes a stakeholders meeting and elected and appointed officials meetings.*

PUBLIC ENGAGEMENT

- **Fall** - Prioritization of recommendations
- **Winter** - Public review of draft plan



Northglenn

PLAYBOOK



Parks, Recreation & Culture
Long-Range Plan

City of Northglenn Parks, Recreation & Culture Long-Range Plan Survey Report





Table of Contents

- Introduction
- Research Methods
- Key Findings
- Living in Northglenn
- Current Usage
- Current Conditions
- Future Needs and Priorities
- Arts & Culture
- Additional Comments/Suggestions
- Demographics

Introduction

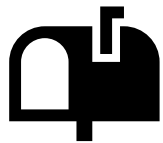
- The purpose of this study is to gather community feedback on the City of Northglenn parks, recreation facilities, amenities, future planning, arts and culture communication, and more.
- This survey research effort and subsequent analysis are designed to assist the City of Northglenn in developing a plan to reflect the community's needs and desires.



Research Methods

1 = Statistically Valid (Invitation Survey)

Paper surveys and postcards were mailed to a systematic random sample of residential address in Northglenn, with the option to complete online through a password-protected website (1 response per household). The cover letter had instructions on how to complete the survey in Spanish, and a Spanish version of the survey is also available online.



300

Invitation surveys completed
+/- 5.6% Margin of Error

2 = Open Link Survey

Later, the online survey was made available to all Northglenn stakeholders, including non-residents (e.g., commuters, residents of nearby communities)



36

Open Link surveys completed
as of 5/10

8,917 Surveys and Postcards Mailed



**Parks,
Recreation &
Culture Survey**



The City of Northglenn Parks, Recreation & Culture Department is asking residents to complete this survey to better understand present and future needs for parks and recreation facilities, programs, and services.

If you already completed the survey, we appreciate your time and input.

WE WANT TO HEAR FROM YOU!

Share your thoughts on the survey and be entered to WIN!

As thanks for completing this survey, we will draw three winners to win 1 of 3 \$50 Visa gift cards.

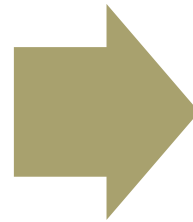
PLEASE DON'T LOSE THIS POST CARD AS YOU WILL NEED THE UNIQUE CODE ON THE BACK IN ORDER TO COMPLETE THIS SURVEY.



Weighting the Data

1

The underlying data from the survey were weighted by age, gender, and ethnicity to ensure appropriate representation of **City of Northglenn residents** across different demographic cohorts in the sample.



2

Using U.S. Census Data, the age, gender, and ethnicity distributions in the sample were adjusted to more closely match the actual population profile of the **City of Northglenn**.

Key Findings



There are higher levels of satisfaction with the quality of parks, recreation, and culture facilities provided by the City of Northglenn, with 64% of the Invite sample rating satisfaction a 4 or 5 on a scale of 1-5. Nearly one-third of the Invite sample rated their satisfaction as a 3. The average rating overall is 3.8 out of 5.



At least 42% of respondents say they use City parks and open spaces as well as trails and pathways at least once a week. The Recreation Center also see high levels of use. Respondents generally feel that the physical condition of all the Parks, Recreation, and Culture facilities they've visited are in good condition. The average rating was a 3.9 on a scale of 1-5, with 5 being "excellent."

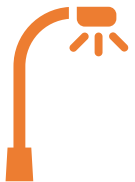


The quality of programs is seen very positively by respondents. A total of 79% of respondents rated the quality a 4 or a 5 on a scale of 1-5, with 5 being "excellent." The average rating overall was 4.1. The top reasons why households participate in Parks, Recreation, and Culture programs are the location of the facility, healthy mind & body/general wellness, and the cost to participate is reasonable.

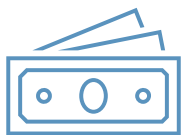
Key Findings



City parks and open spaces, and trails and pathways are the most important facilities to respondents, each with an average rating of 4.6 out of 5, with 5 being “very important”; however, these categories rated lower on meeting the needs of the community (4.2 average) indicating some room for improvement.



Additional lighting, improved safety and security, and additional amenities are the highest rated aspects that, if addressed, would increase respondents’ use of the City of Northglenn Parks, Recreation and Culture facilities, programs, and services.



Respondents are favorable toward additional spending on parks, recreation, and culture programs. While 43% said they’d prefer the City to spend about the same, 47% of the Invite sample said they’d like to see the City invest more.

Key Findings



Maintaining, repairing, or replacing existing amenities and infrastructure is the top priority for the Invite sample (60%), followed by protecting or enhancing open space and natural areas (58%) and building or improving trails and paths (51%). Adding new indoor facilities is the lowest priority (6%).



Over half (56%) of respondents said off-street trails connecting parks and other destinations was the top needed future amenity followed by natural areas, quiet places to relax, and community gardens. A new performing arts center and a new rehearsal space or dance studio are of lesser importance.

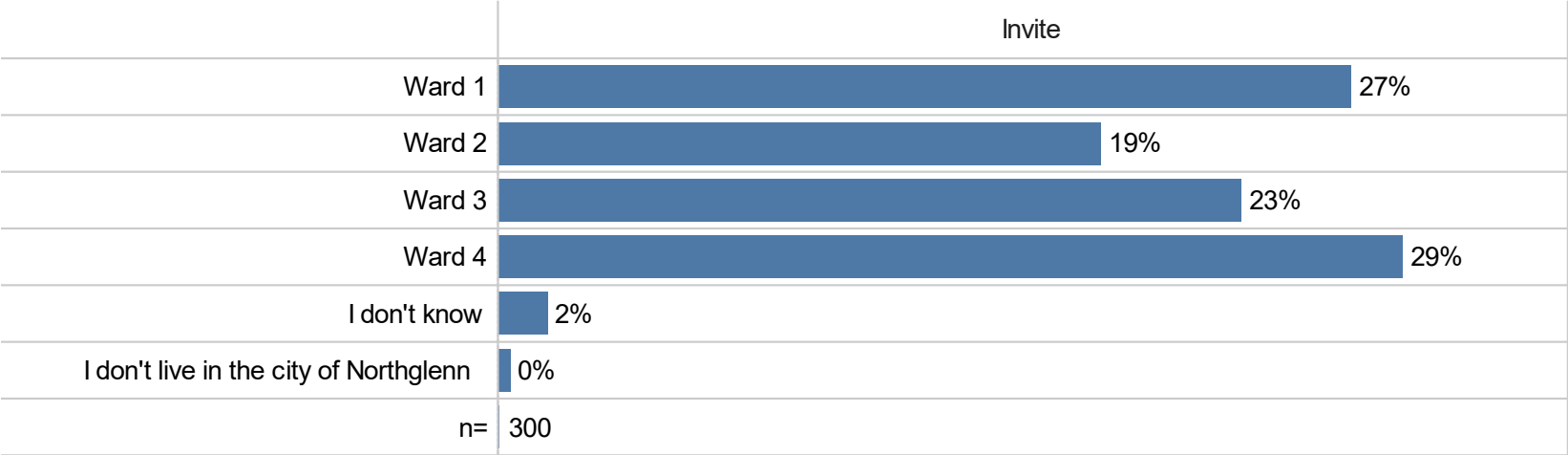


Respondents believe in the value of arts and culture opportunities. All categories received higher ratings (3.9 out of 5 and above), except for the importance of arts and culture opportunities for attracting tourism. The importance of arts and culture programs and events were not rated as highly. A total of 43% of respondents said that more communication about current offerings would increase their participation in arts and culture offerings.

Location in Northglenn

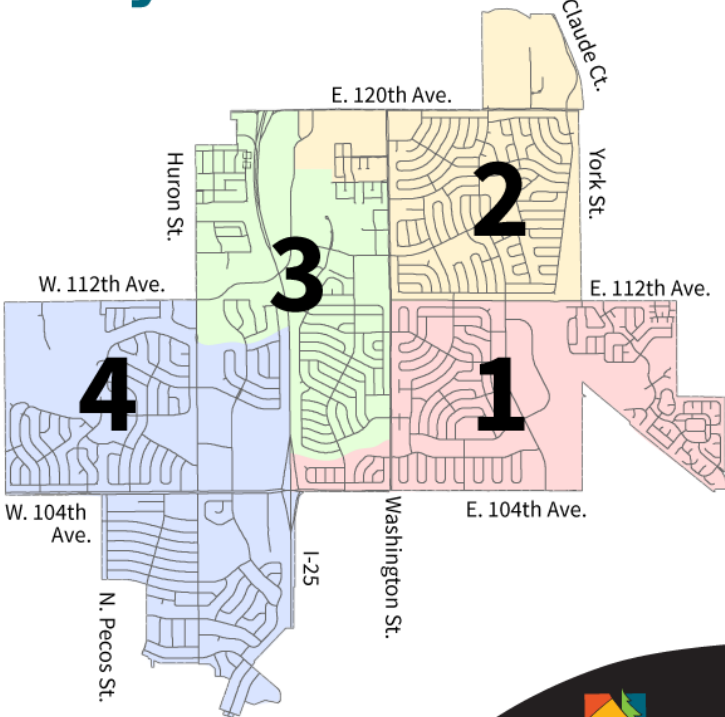
The largest shares of responses were received from Wards 1 and 4, and the lowest shares from Ward 2.

According to the map below, which ward do you live in?



Source: RRC

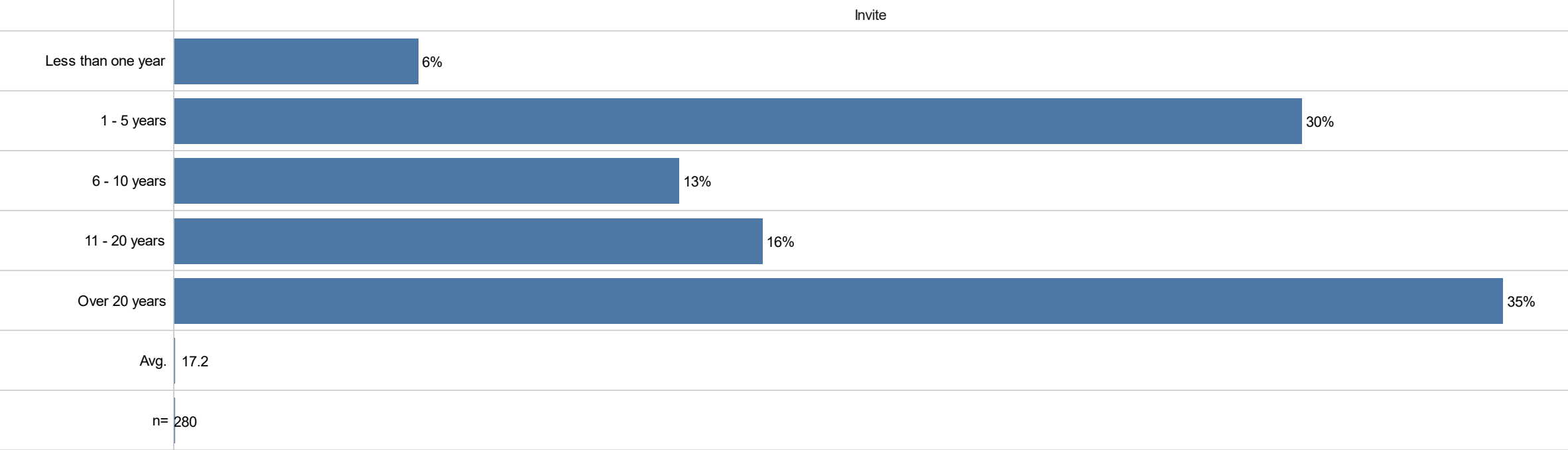
City Wards



Length of Time in Northglenn

Over one-third (35%) of the Invite sample have lived in the City of Northglenn for 20 or more years, and 36% are newer residents having lived in the City for less than a year to five years. The average length of residency is 17 years.

How long have you lived in the City of Northglenn? Enter 0 if less than a year.

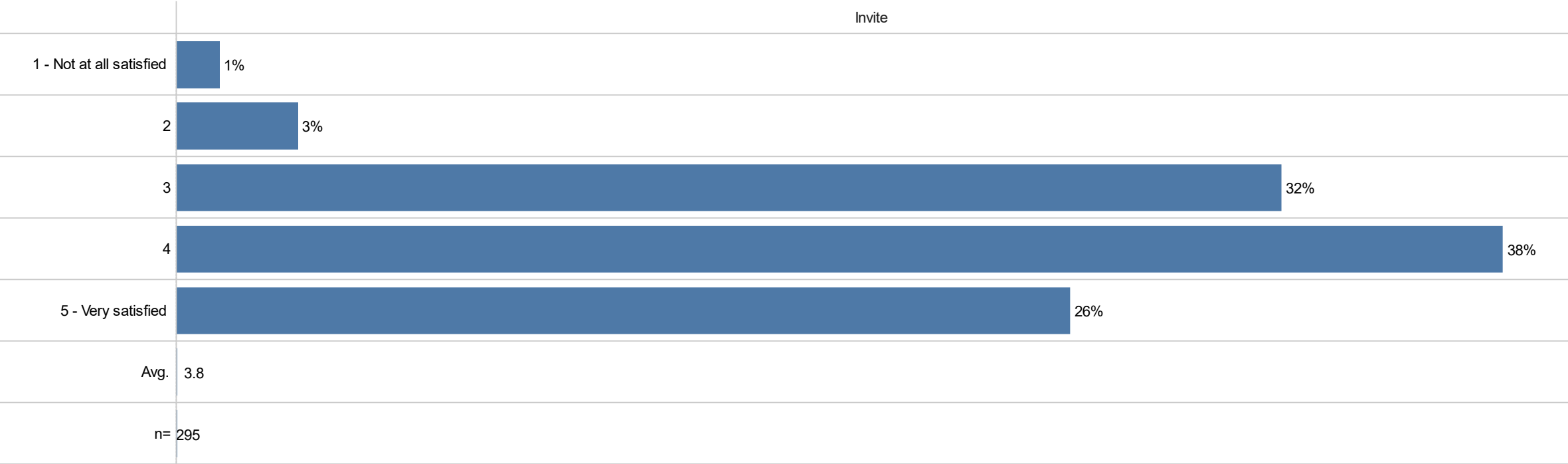


Source: RRC

Satisfaction with Parks, Recreation & Culture Facilities

There are higher levels of satisfaction with the quality of parks, recreation and culture facilities, and programs provided by the City of Northglenn, with 64% of the Invite sample rating satisfaction a 4 or 5 on a scale of 1-5. Nearly one-third of the Invite sample rated their satisfaction as a 3. The average rating overall is 3.8 out of 5.

Overall, how satisfied have you been with the quality of parks, recreation and culture facilities and programs provided by the City of Northglenn?



Source: RRC

Frequency of Use

At least 42% of respondents say they use City parks and open spaces as well as trails and pathways at least once a week. The Recreation Center also see high levels of use. Performing arts/classes/camps are the least utilized service with 93% of respondents saying that no one in their household has participated.

How frequently have you and/or a member of your household used or participated in any of the following facilities or services?
 Invite

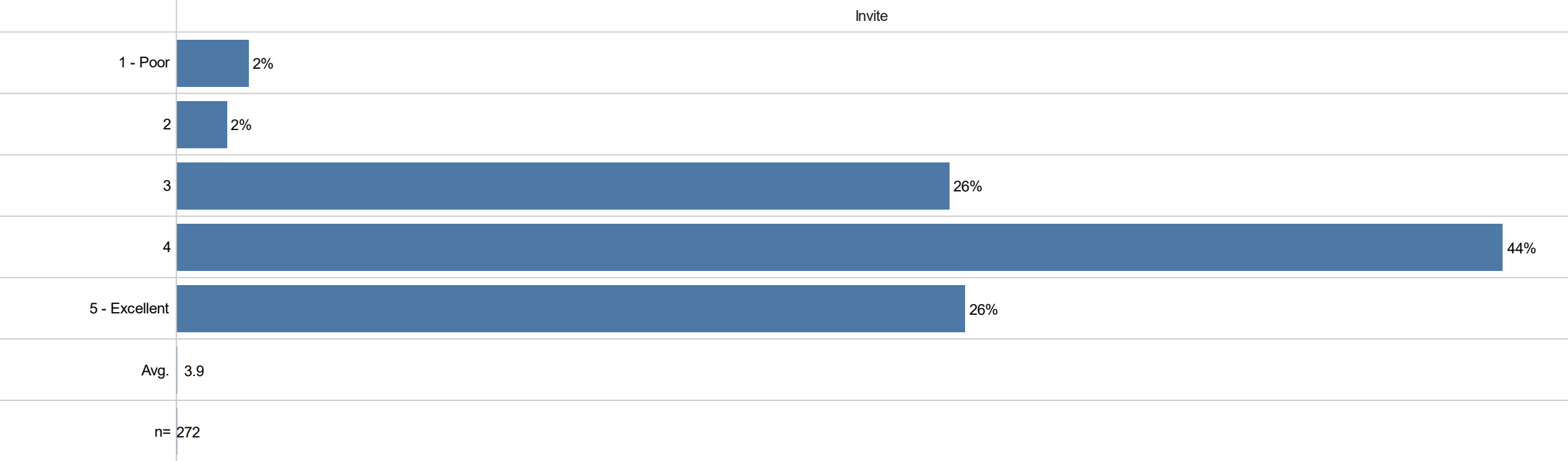
		At least once a week	At least once a month	A few times a month	A few times a year	Have not participated
City parks & open space	n=291	43%	10%	17%	25%	4%
Trails and pathways	n=290	42%	7%	20%	20%	11%
Community events (e.g., Pirate Fest)	n=286		4%	2%	60%	34%
Recreation Center	n=288	13%	9%	12%	26%	40%
Summer concerts/movies	n=284	0%	5%	4%	42%	49%
Public art	n=289	2%	6%	2%	28%	61%
Kiwanis Pool	n=290	2%	1%	3%	22%	73%
Children (ages 2-12) recreation programs	n=283	4%	4%	3%	12%	77%
Parsons Theater	n=288	0%	1%	1%	19%	79%
Parsons Theatre performances	n=287		0%		19%	81%
Adult recreation programs	n=288	3%	0%	2%	9%	86%
Youth and teen (ages 11-18) recreation programs	n=285	1%	3%	2%	7%	86%
Senior Center	n=287	1%	1%	1%	4%	92%
Senior recreation programs	n=286	1%	1%	1%	6%	92%
Performing arts/classes/camps	n=287	0%		1%	7%	93%
Other	n=92	4%	2%	2%	4%	88%

Source: RRC

Overall Park Condition

Respondents generally feel that the physical condition of all of the Parks, Recreation, and Culture facilities they've visited are in good condition. The average rating was a 3.9 on a scale of 1-5, with 5 being "excellent."

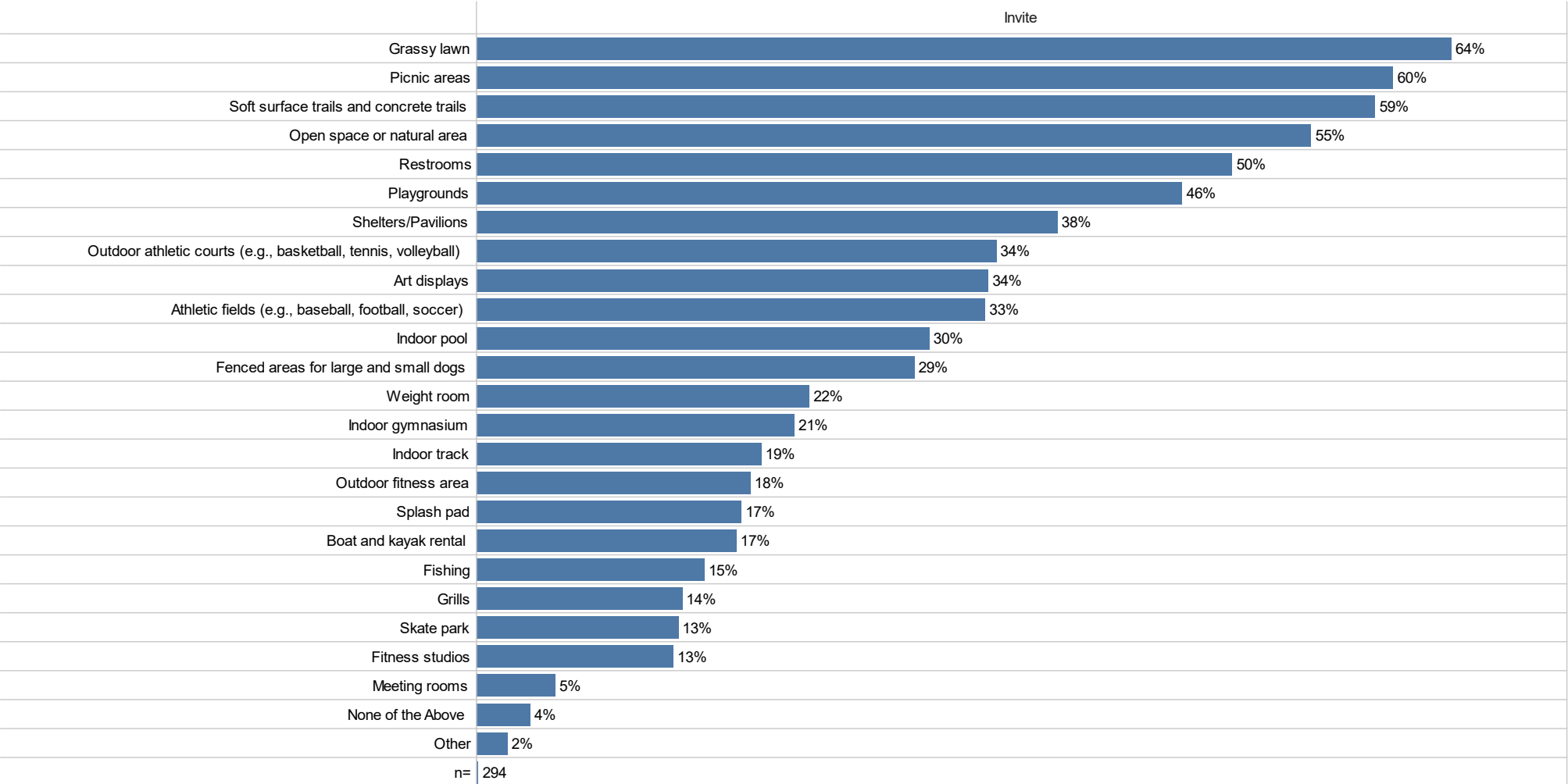
Overall, how would you rate the physical condition of ALL of the Parks, Recreation, and Culture facilities you have visited?



Source: RRC

Use of Amenities

Which of the following amenities does your household use when visiting Northglenn Parks, Recreation, and Culture facilities? (CHECK ALL THAT APPLY)



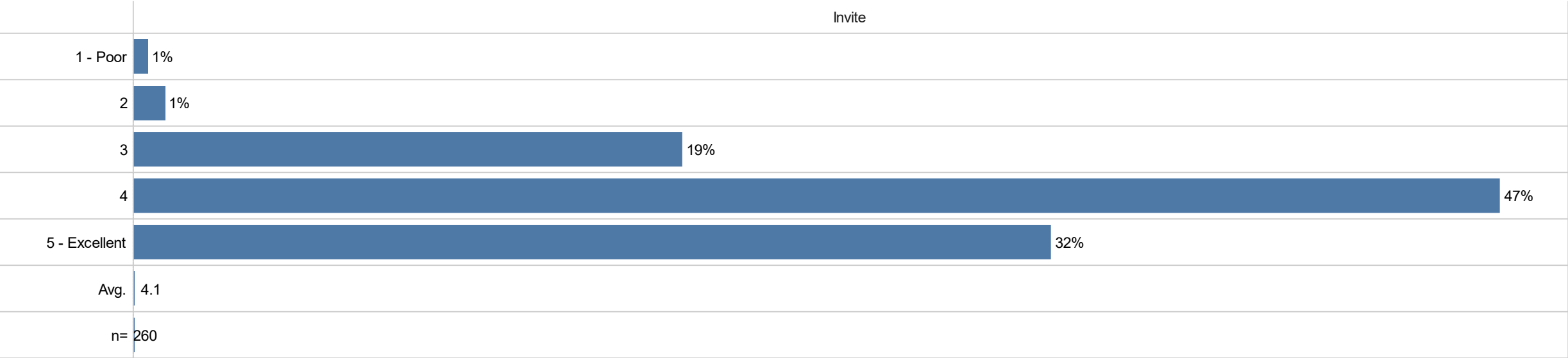
- Grassy lawn, picnic areas, and trails are the most used amenities.
- Only 4% of the sample say they use none of the above.
- Meeting rooms, fitness studios, and skate parks are less utilized amenities.

Source: RRC

Overall Programs Rating

The quality of programs is seen very positively by respondents. A total of 79% of respondents rated the quality a 4 or a 5 on a scale of 1-5, with 5 being “excellent.” The average rating overall was 4.1.

Overall, how would you rate the quality of ALL the programs in which you have participated?

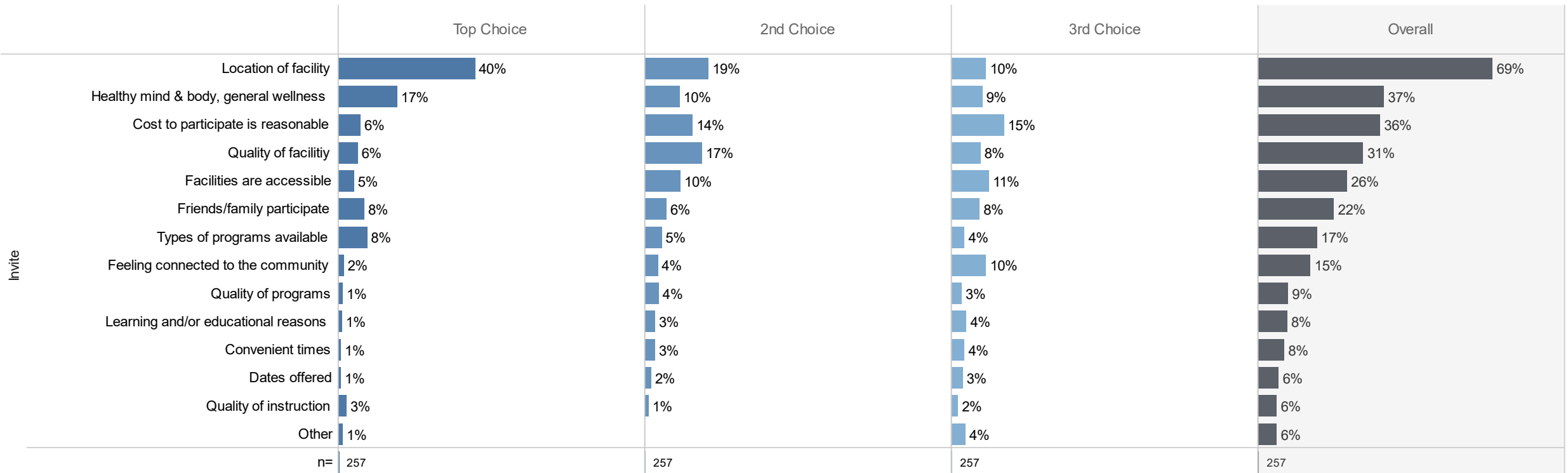


Source: RRC

Reasons for Program Participation

The top reasons why households participate in Parks, Recreation, and Culture programs are the location of the facility, healthy mind & body/general wellness, and the cost to participate is reasonable.

Please check the TOP THREE primary reasons your household participates in Parks, Recreation, and Culture programs.



Invite Sample
Source: RRC

Current Conditions

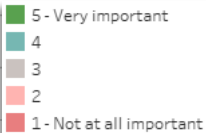


Facilities and Services - Importance

City parks and open spaces, and trails and pathways are the most important facilities to respondents, each with an average rating of 4.6 out of 5. The Senior Center and senior recreation programs are seen as less important.

For the following section please rate how important the following facilities and services are to your household. Please provide an answer whether or not you have used the facility or service.
Invite Sample

Facility/Service	n	Avg. Rating	1 - Not at all important	2	3	4	5 - Very important
City parks & open space	n=283	Avg. 4.6	4%	19%	74%		
Trails and pathways	n=285	Avg. 4.6	6%	18%	72%		
Recreation Center	n=280	Avg. 3.9	5%	8%	22%	20%	44%
Community events (e.g., Pirate Fest)	n=276	Avg. 3.7	10%	8%	20%	29%	33%
Summer concerts/movies	n=276	Avg. 3.6	10%	8%	28%	23%	31%
Adult recreation programs	n=274	Avg. 3.1	19%	19%	20%	21%	22%
Public art	n=274	Avg. 3.0	20%	14%	26%	21%	19%
Children (ages 2-12) recreation programs	n=275	Avg. 3.0	35%	8%	11%	15%	31%
Kiwanis Pool	n=277	Avg. 3.0	25%	16%	19%	18%	22%
Youth and teen (ages 11-18) recreation programs	n=275	Avg. 2.7	42%	7%	17%	12%	22%
Parsons Theater	n=274	Avg. 2.6	27%	21%	25%	16%	12%
Parsons Theatre performances	n=273	Avg. 2.6	30%	17%	23%	18%	11%
Performing arts/classes/camps	n=273	Avg. 2.5	33%	18%	27%	11%	11%
Senior recreation programs	n=279	Avg. 2.5	42%	15%	12%	14%	17%
Senior Center	n=275	Avg. 2.5	41%	16%	14%	13%	16%
Other: (specify)	n=44	Avg. 2.7	45%	20%			30%



Invite Sample
Source: RRC

Facilities and Services - Needs Met

City parks and open spaces, the Recreation Center, and trails and pathways are most meeting the needs of the community (although this rating is lower than the overall importance rating).

For the following section please rate how the following facilities and services are currently meeting the needs of the community. Please provide an answer whether or not you have used the facility or service.

Invite Sample

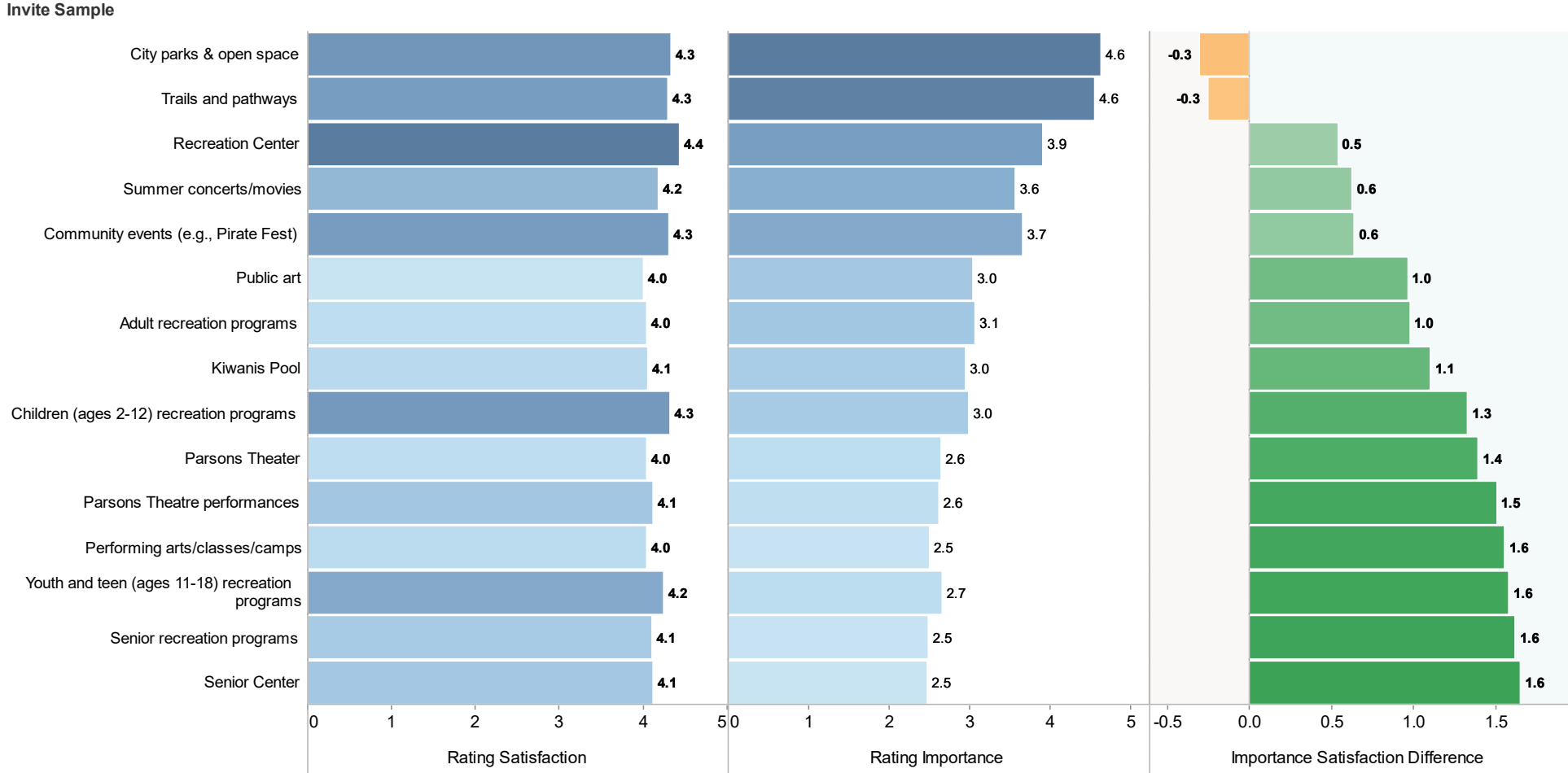
City parks & open space	n=248	Avg. 4.2	4%	15%	30%	50%	
Recreation Center	n=233	Avg. 4.2	6%	12%	29%	51%	
Trails and pathways	n=249	Avg. 4.2	6%	17%	21%	54%	
Community events (e.g., Pirate Fest)	n=209	Avg. 4.0	4%	4%	19%	32%	41%
Summer concerts/movies	n=213	Avg. 3.9	4%	4%	26%	29%	38%
Children (ages 2-12) recreation programs	n=186	Avg. 3.9	5%	6%	25%	23%	41%
Youth and teen (ages 11-18) recreation programs	n=183	Avg. 3.7	7%	8%	25%	25%	35%
Kiwanis Pool	n=207	Avg. 3.7	5%	10%	27%	26%	32%
Public art	n=202	Avg. 3.6	10%	5%	28%	25%	32%
Parsons Theatre performances	n=194	Avg. 3.6	8%	9%	25%	28%	31%
Senior Center	n=202	Avg. 3.6	11%	8%	24%	23%	34%
Senior recreation programs	n=199	Avg. 3.6	8%	9%	27%	22%	33%
Parsons Theater	n=204	Avg. 3.6	10%	8%	26%	24%	32%
Adult recreation programs	n=204	Avg. 3.6	8%	10%	27%	24%	30%
Performing arts/classes/camps	n=183	Avg. 3.5	10%	9%	34%	19%	29%
Other	n=41	Avg. 3.0	31%	7%	23%	8%	31%



Invite Sample
Source: RRC

Facilities and Services – Importance/Needs Met

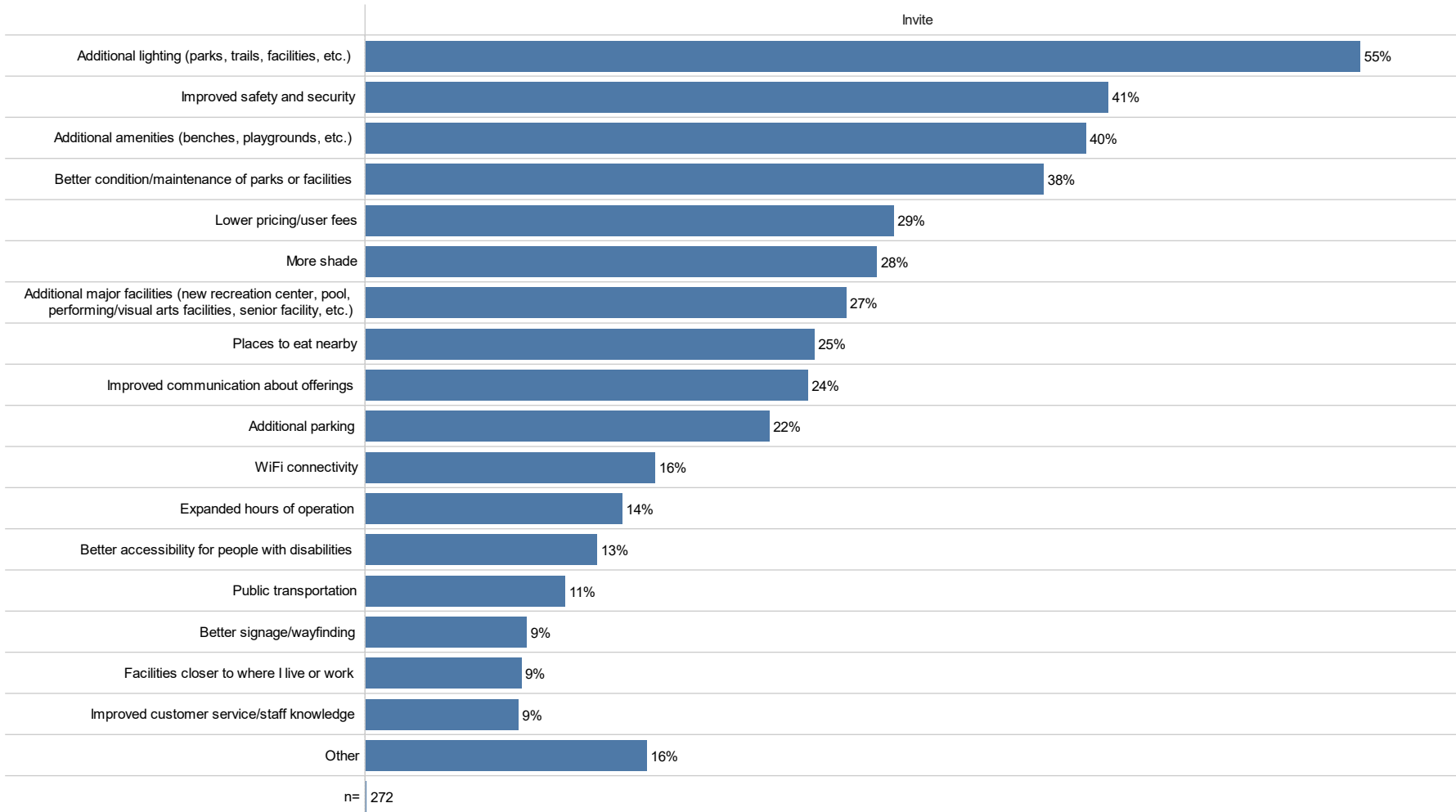
The graph below highlights the differences between the average ratings of importance and the average rating of meeting the needs of the community (satisfaction). The only two areas where a negative difference is seen are city parks and open space, and trails and pathways.



Source: RRC

Increasing Use

What are the most important areas, that if addressed, would increase your use of the City of Northglenn Parks, Recreation, and Culture facilities, programs, and services?
(CHECK ALL THAT APPLY)



Source: RRC

- Additional lighting, improved safety and security, and additional amenities are the highest-rated area that if addressed, would increase respondents' use of the City of Northglenn Parks, Recreation and Culture facilities, programs, and services.

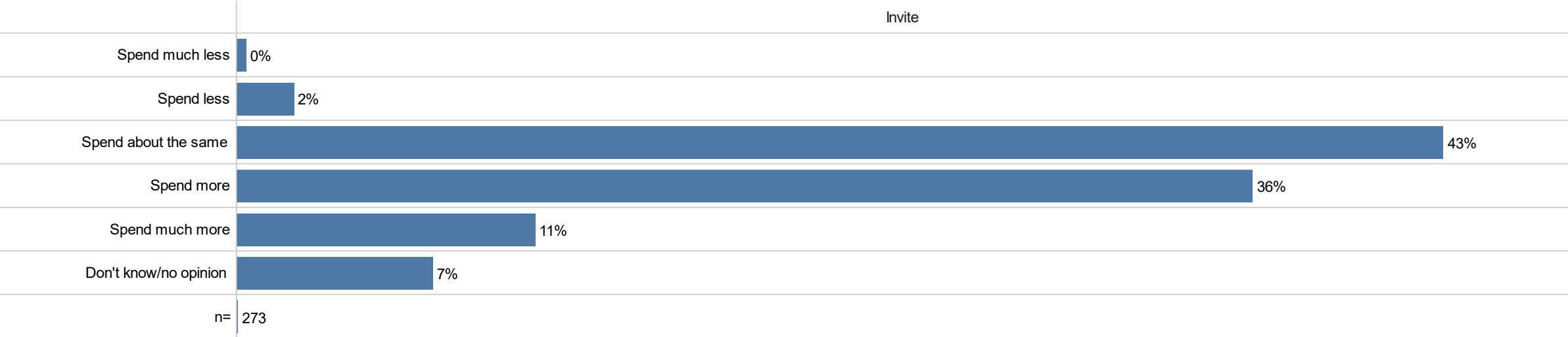
Future Needs and Priorities



Investment in Parks, Recreation, and Culture Programs

Respondents are favorable toward additional spending on parks, recreation, and culture programs. While 43% said they'd prefer the City to spend about the same, 47% of the Invite sample said they'd like to see the City invest more.

Understanding that the City has a limited budget, should the City increase or decrease its investment in parks, recreation and culture programs?

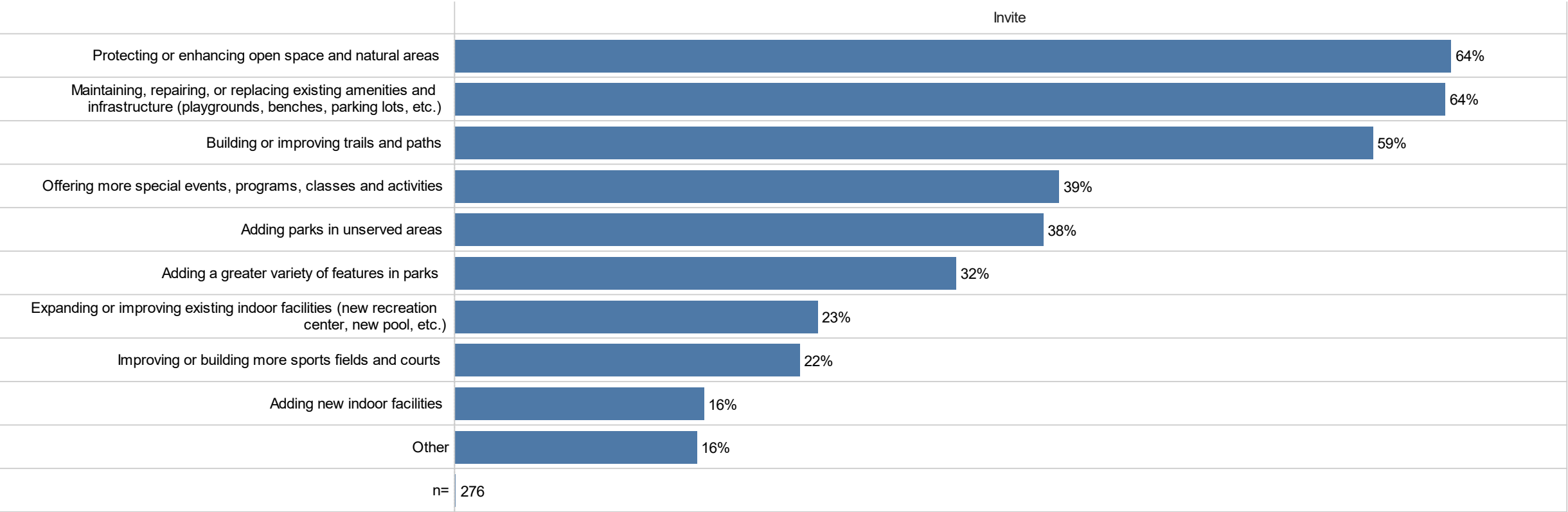


Source: RRC

Important Needs for Future Improvement

Protecting or enhancing open spaces and natural areas and maintaining, repairing, or replacing existing amenities and infrastructure are the most important needs for improvement over the next 10 years (64%). The least important need is adding new facilities (16%).

What are the most important needs for improvement in The City of Northglenn over the next 10 years? (CHECK ALL THAT APPLY)



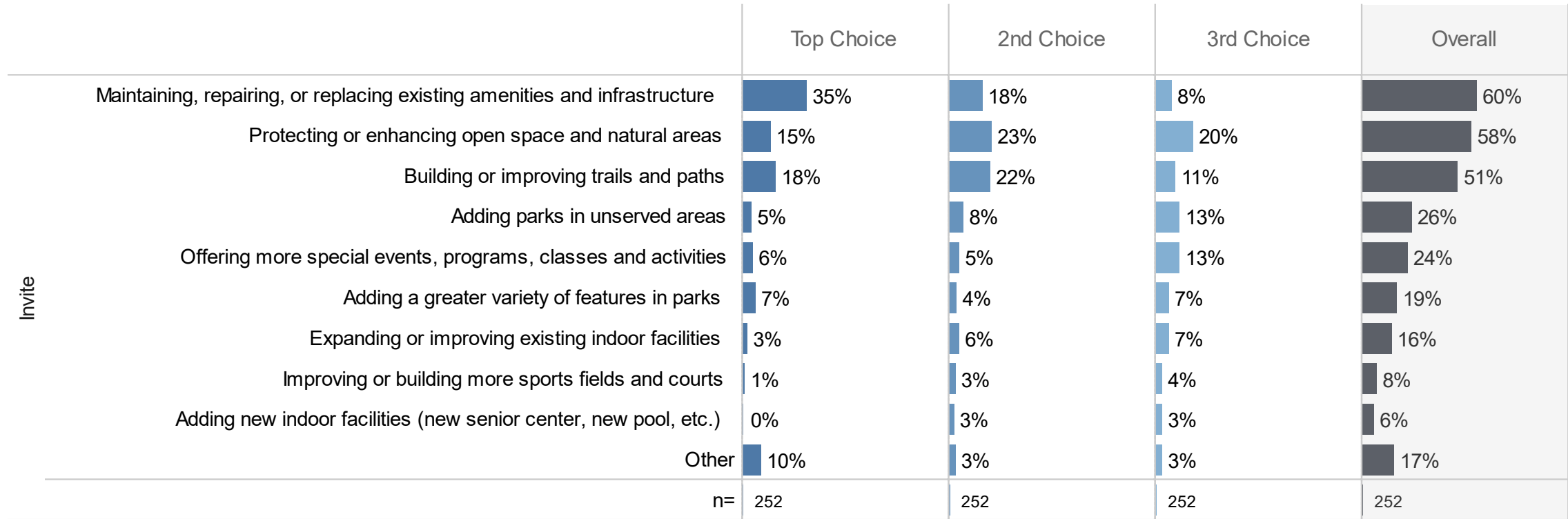
Source: RRC

Important Needs for Future Improvement

Top 3

Maintaining, repairing, or replacing existing amenities and infrastructure is the top priority for the Invite sample (60%), followed by protecting or enhancing open space and natural areas (58%) and building or improving trails and paths (51%). Adding new indoor facilities is the lowest priority (6%).

From the list in the previous question, please select the top three highest priority items for you and your household.

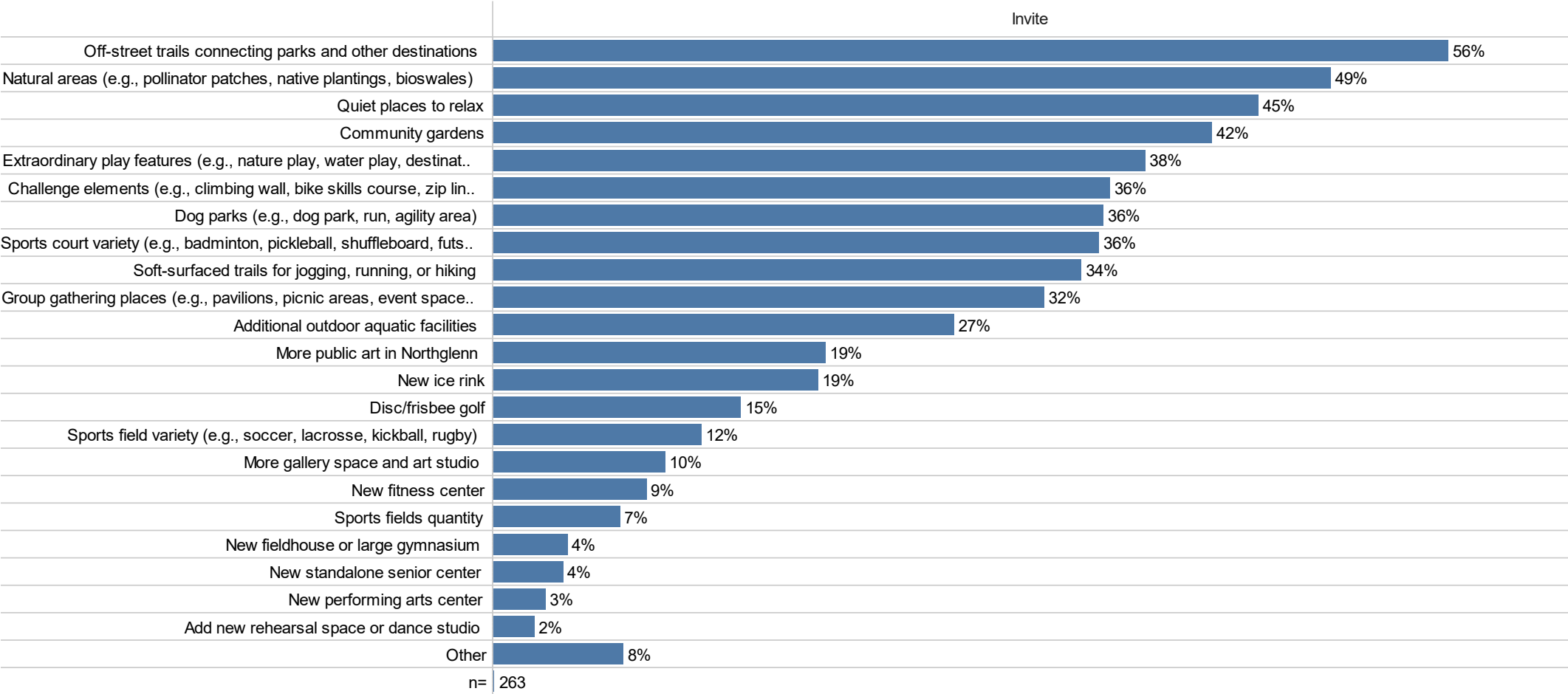


Invite Sample
Source: RRC

Future Amenities or Facilities

Over half (56%) of respondents said off-street trails connecting parks and other destinations was the top needed future amenity followed by natural areas, quiet places to relax and community gardens. A new performing arts center and a new rehearsal space or dance studio is of lesser importance.

What types of amenities do you and your household feel are most important to be added or expanded over the next 10 years? (CHECK ALL THAT APPLY)

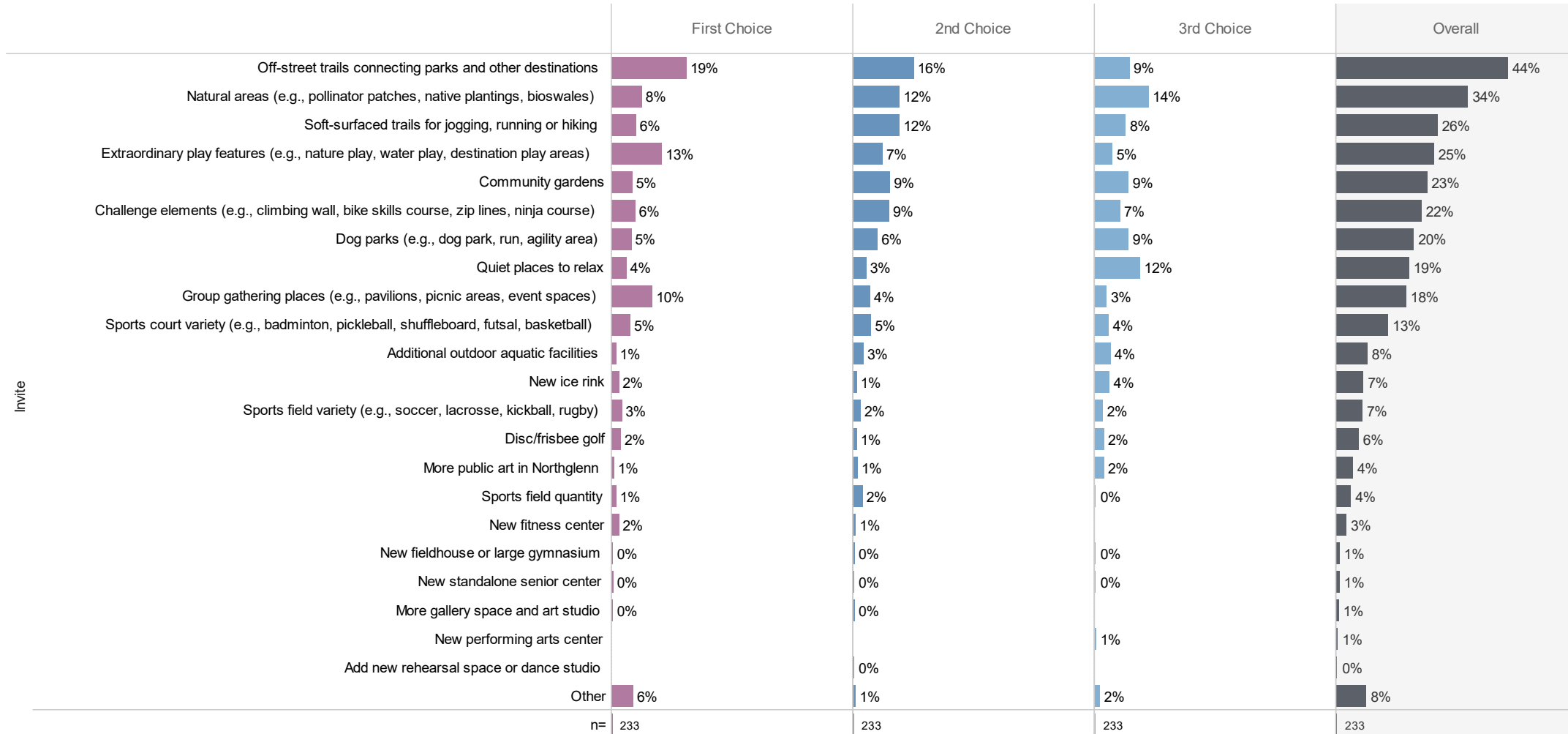


Future Amenities or Facilities

Top 3

Off-street trails were in the top 3 priorities of 44% of respondents, and the first choice for 19%. This was followed by natural areas (34%), and soft-surfaced trails for jogging running or hiking (26%).

From the list in the previous question, please select the top three highest priority items for you and your household.



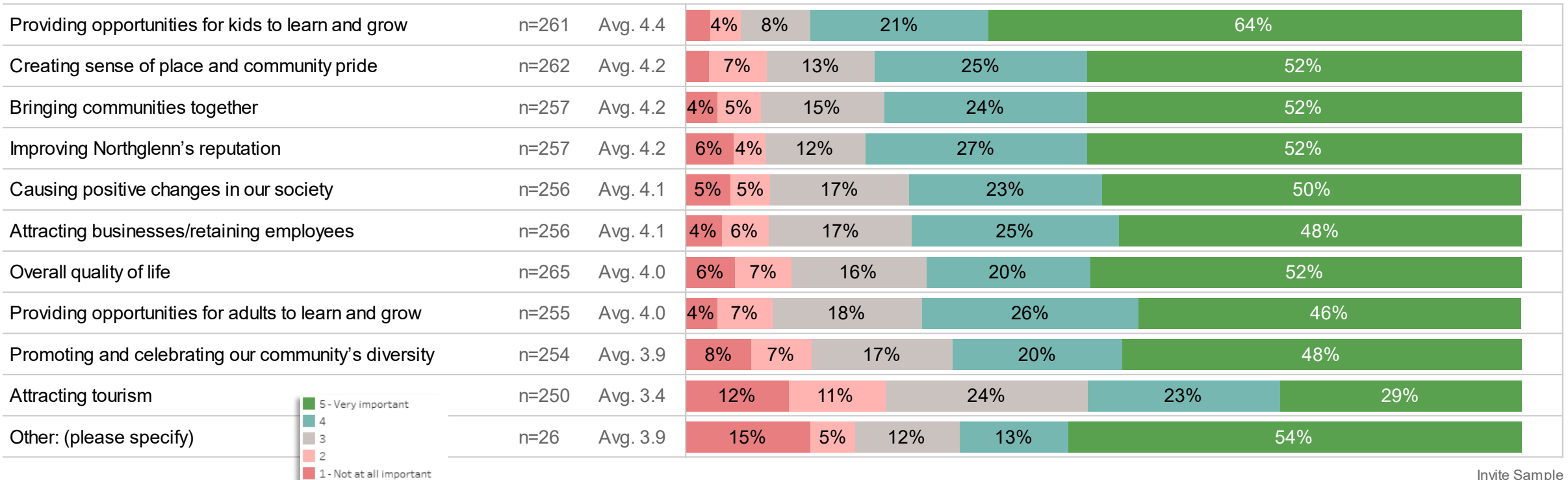
Arts & Culture



Importance of Arts and Culture Opportunities

All categories received higher ratings from the Invite sample (3.9 out of 5 and above), except for the importance of Arts and Culture opportunities for attracting tourism.

How important are arts and culture opportunities related to:
Invite Sample



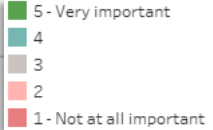
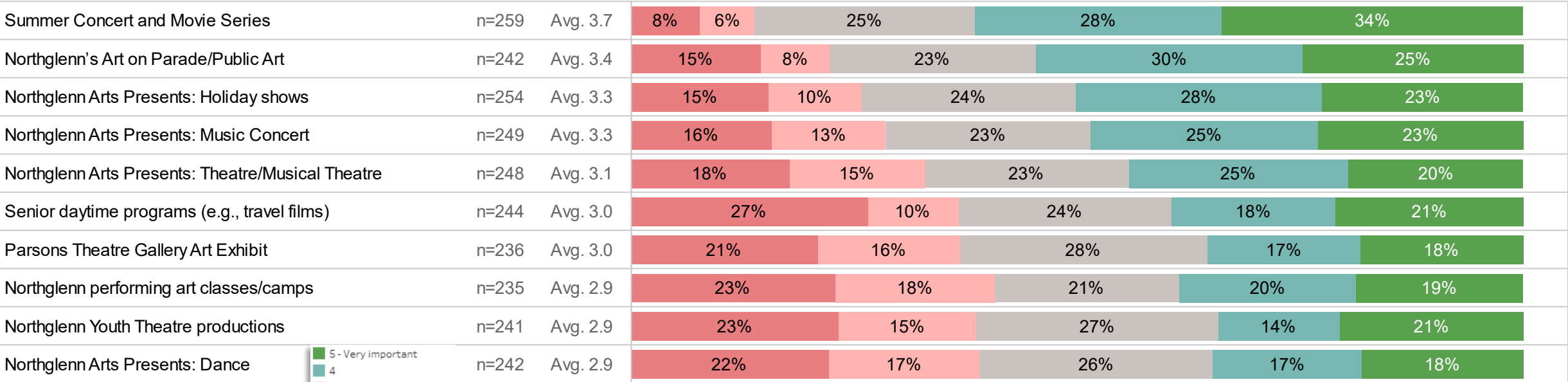
Invite Sample
 Source: RRC

Importance of Arts and Culture Programs & Events

Summer Concert and Movie Series was the highest-rated arts and culture event with 62% of respondents rating it a 4 or a 5, with 5 being “very important.” Northglenn performing art classes/camps, Northglenn Youth Theatre productions, and Northglenn Arts Presents: Dance were rated with lesser importance.

How important are each of the following arts and culture programs and events to you and/or your family?

Invite Sample

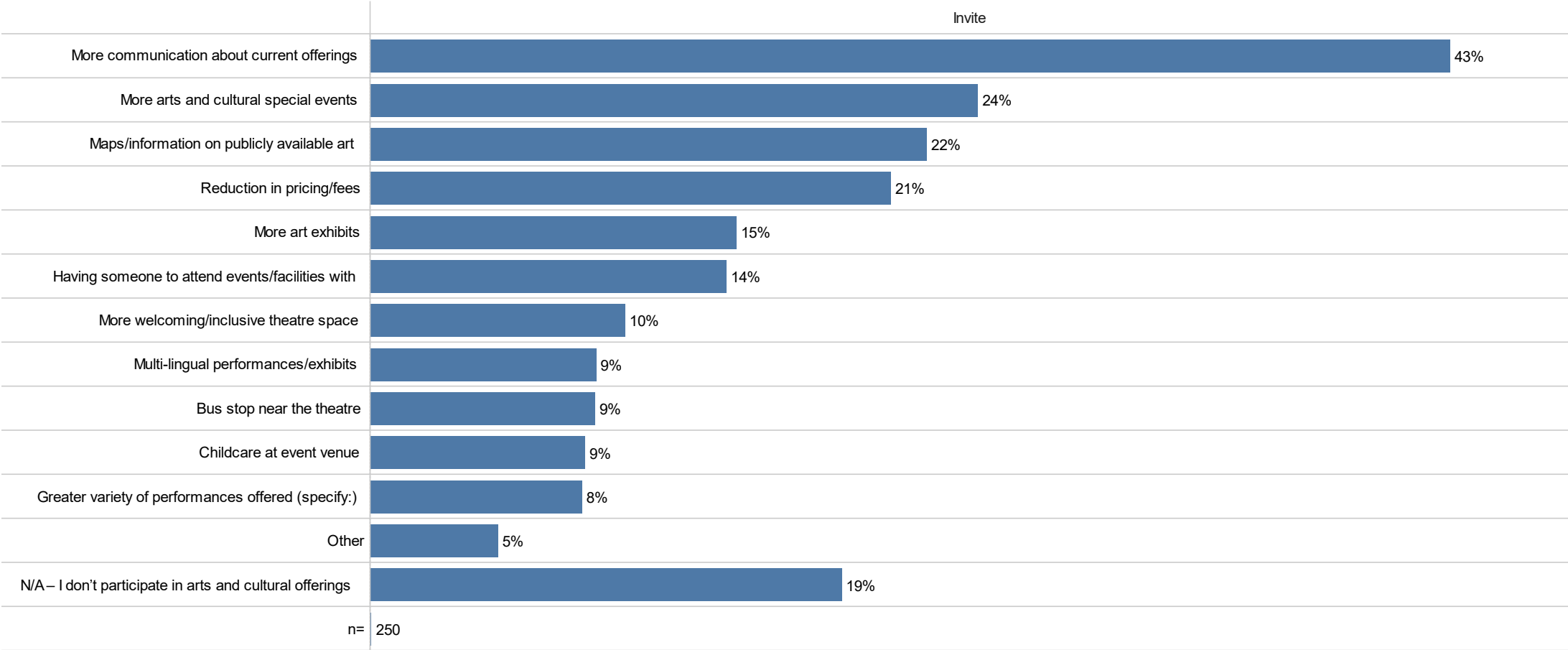


Invite Sample
Source: RRC

Increasing Participation in Arts & Culture Opportunities

A total of 43% of respondents said that more communication about current offerings would increase their participation in arts and culture offerings. Nearly a quarter said more arts and culture special events would help increase their participation, and 19% said they don't participate in arts and cultural offerings.

What would increase your participation in arts and culture opportunities? (CHECK ALL THAT APPLY)



Additional Comments/Suggestions



Additional Comments/Suggestions

Respondents were offered an opportunity at the end of the survey to provide any additional comments about parks, facilities, and services in Northglenn. A total of 104 additional comments were received. Common themes are outlined below, and a list of full responses is included in the Appendix.

Parks and Trails

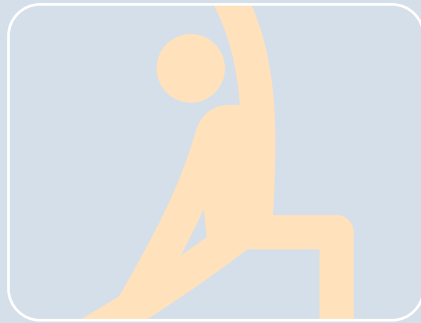


“I’d like to see the trail system (where trails connect) marked better.”

“Instead of utilizing money into recreation centers we need to spend money on open spaces and trails.”

“To help make the parks, hiking/walking trails more enjoyable and appealing, try to keep trash/debris picked up on a regular basis.”

Classes

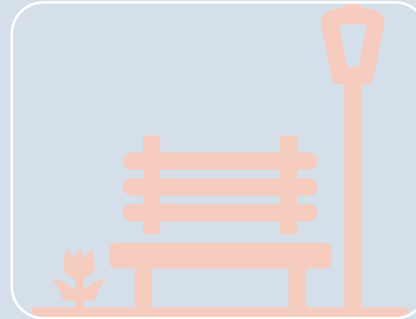


“I want to take judo, but I work weird hours, so more class times would be nice.”

“Need a real Greenway for safe bike riding”

“It’s very adults with children and senior focused—not much for people outside these categories.”

Maintenance



“The city has great existing parks and a new rec center. I think the priority now is investing in what exists. For example, more parks could have pavilions and permanent restrooms. Investing more in current parks helps ensure equity.”

“More trash cans, please; more dog poop bag stations.”

Homelessness

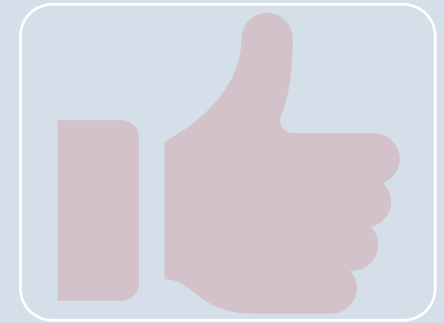


“Make a safe place for the homeless. Street sweep/trail cleaning more often.”

“Please focus on housing homeless to create a safer community”

“Poor bathroom maintenance in parks; safety concerns regarding homeless camping.”

Great Job



“I believe Northglenn does a good job with our Parks and Rec.”

“I appreciate the park and public art.”

“The city does a good job keeping the parks neat and tidy.”

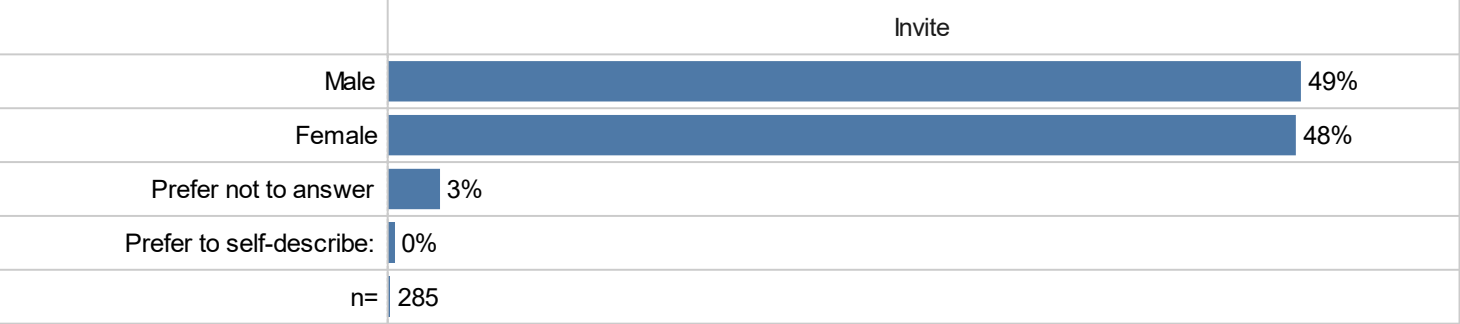
Demographics



Gender & Age

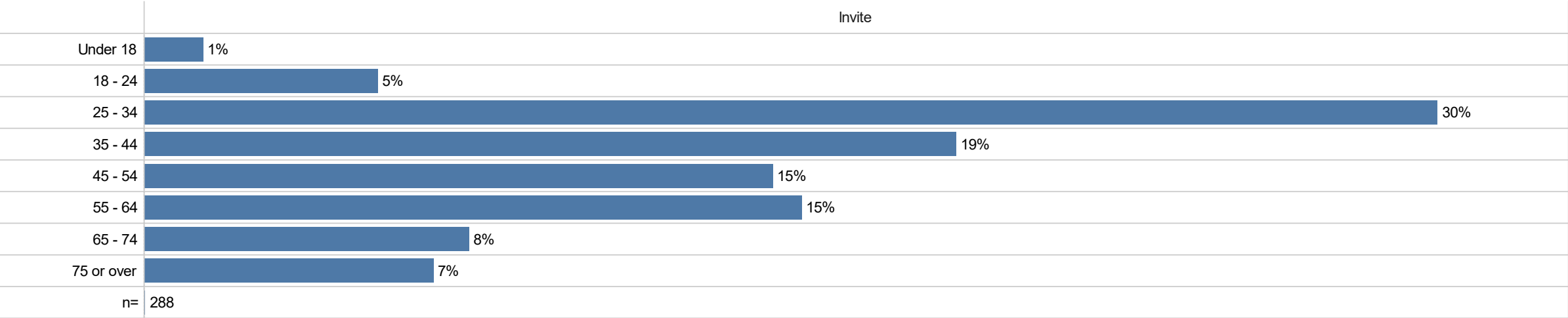
The Invite sample was weighted by age to better represent the City of Northglenn population.

Please indicate the gender with which you identify



Source: RRC

What is your age?

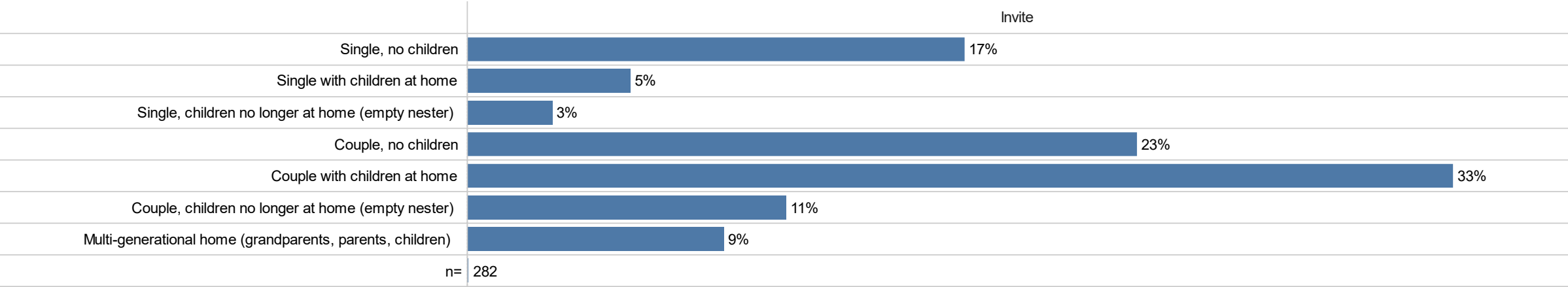


Source: RRC

Household Makeup

Most respondents were couples with children at home (33%) followed by individuals and couples without children.

Which of these categories best applies to your household?

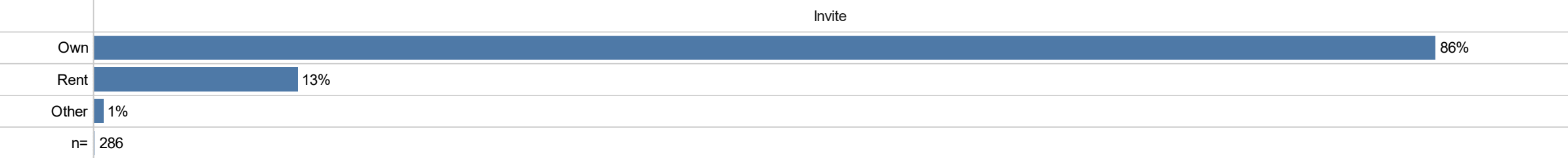


Source: RRC

Dog Ownership & Residence Ownership

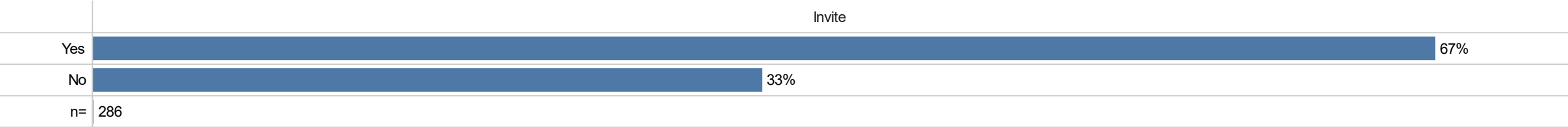
A total of 13% of respondents are currently renting their home and majority (67%) own a dog.

Do you own or rent your residence?



Source: RRC

Do you or a member of your household own at dog?

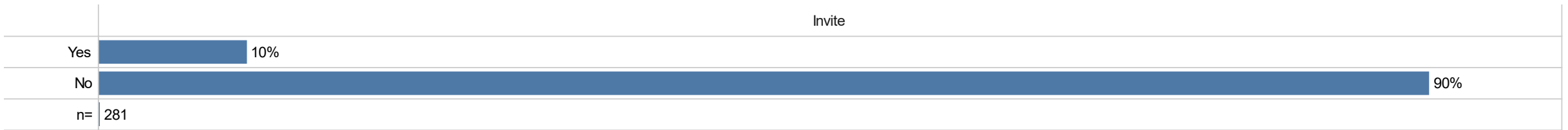


Source: RRC

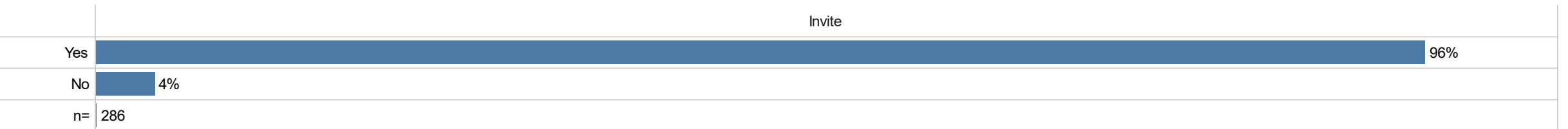
Voter Registration & ADA Needs

A total of 10% of respondents do have a need for ADA-accessible facilities and services, and almost all (96%) are registered voters.

Does your household have a need for ADA-accessible (Americans with Disabilities) facilities and services?



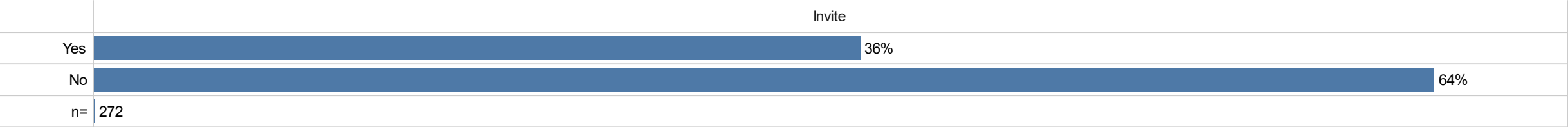
Are you a registered voter?



Ethnicity & Race

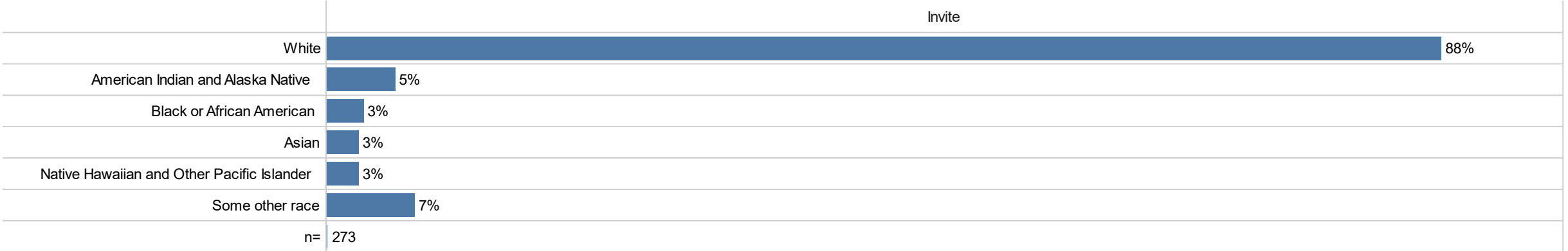
The Invite sample was weighted by ethnicity and race to better reflect the City of Northglenn’s demographic profile.

Are you of Hispanic, Latino, or Spanish origin?



Source: RRC

What race do you consider yourself to be? (CHECK ALL THAT APPLY)

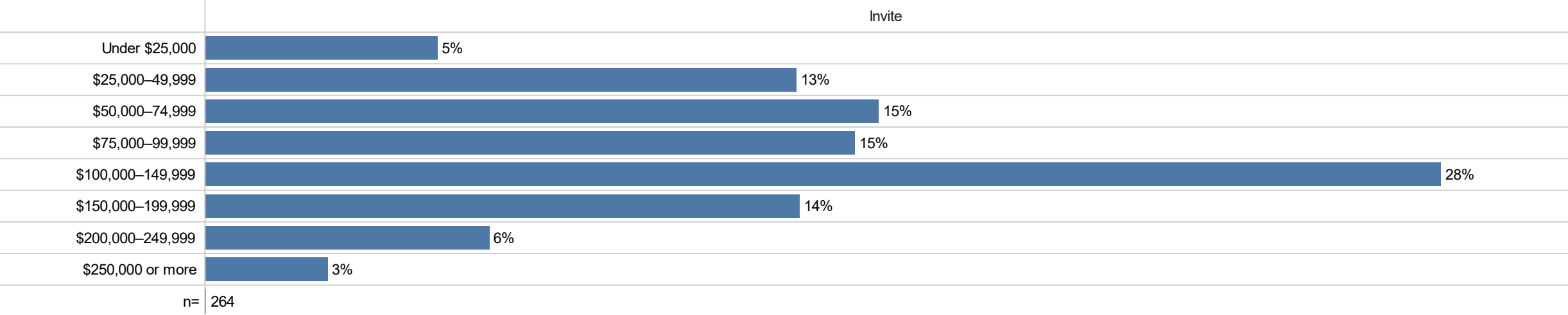


Source: RRC

Income

Over half of the sample (51%) makes at least \$100,000 a year.

Which of these categories best describes the total gross annual income of your household (before taxes)?



Source: RRC



RRC

RRCAssociates.com
303-449-6558

RRC Associates
4770 Baseline Road, Suite 355
Boulder, CO 80303



NORTHGLENN PLAYBOOK BENCHMARKING - Fiscal Year 2022

Metric	Northglenn	Erie, CO	Englewood, CO	Lynwood, WA	Deer Park, TX	Grove City, OH	National Average
System Statistics							
Square mileage of incorporated jurisdiction	7.5	48	7.0	8	10.4	18	unknown
Population	38,419	30,038	36,000	40,690	33,676	43,232	20-50K
Total number of parks	24	13	17	18	28	23	21
Total park acres	167.5	163	151	159	229	427	496
Acres of undeveloped open space	168	1,143	34	122	106	106	107
Acres of parks per 1,000 residents	4.4	5.4	4.2	3.9	6.8	9.9	10.6
Trail miles	28	70	31	8	8	35	8
Population per Facility							
Playgrounds	3,493	1,155	3,600	1,850	1,684	3,326	3,028
Rectangular fields: multi-purpose	2,744	2,146	2,400	20,345	33,676	10,808	7,674
Diamond fields: baseball/softball - adult	6,403	7,510	18,000	13,563	11,225	5,404	11,232
Basketball courts	4,802	12,015	4,500	2,906	3,742	10,808	7,117
Tennis courts (outdoor only)	38,419	unknown	5,143	5,086	8,419	3,603	5,815
Pickleball (outdoor)	n/a	3,004	18,000	unknown	16,838	unknown	9,257
Skate park	38,419	30,038	36,000	40,690	unknown	43,232	32,000
Dog park	38,419	30,038	9,000	40,690	33,676	43,232	28,000
Budget							
Operating expenditures per capita	\$198	\$288	\$239	\$193	\$205	\$35	\$110
Revenue per capita	\$35	\$67	\$43	\$93	\$30	\$2	\$27
Revenue as percentage of operating expenditures	18%	23%	18%	48%	15%	7%	25%
% of total operating expenditures for parks	34%	68%	34%	22%	40%	25%	45%
% of total operating expenditures for recreation	66%	31%	50%	60%	60%	70%	42%
Staffing							
Total number of full-time equivalent employees (FTE)	45.0	89.4	<i>not used for comparison</i>	69.3	120.6	71.2	34.2
FTEs per 10,000 population	11.7	29.8		17.0	35.8	16.5	11.1
Acres/FTE	3.7	1.8		2.3	1.9	6.0	14.5
Operate and maintain non-park sites	Yes	Yes	Yes	Yes	No	Yes	69% yes
Facilities							
Square footage of operated buildings	87,700	63,764	100,000	104,900	unknown	43,000	unknown
Population per recreation center	38,419	30,038	36,000	40,690	33,676	43,232	24,601
Charge a parking fee at its parks or facilities	No	No	No	No	No	No	17% Yes



Existing Conditions and Needs Assessment

Appendix D: Park Profiles

Alvin B. Thomas Memorial Park

Size: 2.7 Acres

Type: Neighborhood

Location: Leroy Dr. & Murray Dr.

Key Features: Small open turf park with basketball equipment

Highlights from Facility and Condition Assessment:

Park features new play equipment for multiple age groups, and two well-lit basketball courts. The only access point to the park is from Leroy Dr.

Opportunities and Capacity Analysis: Potential improvements include upgrades to the pavilion and gathering spaces, as well as to the play area once additional play equipment is replaced. A connection to the nearby trail on the Southern end would be an improvement to the park.

Existing Usage: Neighborhood residents



Central Park at Fox Run

Size: 2.3 Acres

Type: Neighborhood

Location: Fox Run Pkwy. & E 108th Ave.

Key Features: Neighborhood park located overlooking open space with mountain views.

Highlights from Facility and Condition Assessment:

Park has fenced 3/4 basketball court, good connections to Fox Run Open Space Trail system and neighborhood trails, and solar bollard lighting, however it lacks an open, level turf area. Trees in the park are a mix of new and mature shade trees. There is a retention pond along the north edge of the park.

Opportunities and Capacity Analysis: There is an opportunity to expand the playground to include activities for younger children. The space should also take advantage of its unique picnic and gathering opportunity.

Existing Usage: Neighborhood families and trail users.



Charles C. Winburn Park

Size: 11.9 Acres

Type: Neighborhood

Location: Huron St.

Key Features: Large park with trail running through it, connecting to regional trail system. Has unique water feature, gazebo, and sculptures.

Highlights from Facility and Condition Assessment:

Park with a large turf area, pond, and a nice trail along the southern edge. It provides a location for field sports however the park does not offer parking facilities. Connectivity to the park via Huron Street and Farmers Highline.

Opportunities and Capacity Analysis: The park has potential for various enhancements, including the addition of amenities and a parking lot opposite Santa Fe Drive.

Existing Usage: Limited to trail users and pedestrians.



E.B. Rains, Jr. Memorial Park

Size: 25.6 Acres

Type: Regional

Location: Community Center Drive

Key Features: Large regional park surrounding Webster Lake with a variety of activities. Often the site of community events.

Highlights from Facility and Condition Assessment:

This park has excellent character due to the lake, mature trees, destination play, and pathway system. It is considered one of the best regional parks in the North Denver Metro area. In addition to its variety of play features and facilities, it is well connection to the regional trail system through the Farmers Highline Canal.

Opportunities and Capacity Analysis: There is no room for expansion or new facilities so renovation of existing features is key. Future projects include renovations to playgrounds and updating equipment, renovation or replacement of public restroom, addition of ADA path to east side of lake path, and concrete benches at skate park. Suggested improvements include repurposing flag memorial, upgrading benches and picnic tables, loop path system, and water features.

Existing Usage: Community and regional population for recreational and event uses.



Eleanor M. Wyatt Centennial Park

Size: 2.7 Acres

Type: Special Use

Location: Kennedy Dr. & Melody Dr.

Key Features: Park space along trail

Highlights from Facility and Condition Assessment: Features of this park include a linear sculpture park, mature trees throughout, and connectivity to I-25 overpass and bridge using the trail.

Opportunities and Capacity Analysis: Potential to enhance gardens, trail connections, and irrigation. Addition of more sculptures to further define the space.

Existing Usage: Trail users



Fox Run Open Space and Stonehocker Park

Size: 2.9 Acres

Type: Open Space and Special Use Park

Location: Fox Run Pkwy. & E 109th Ave.

Key Features: Open space with trails and community garden.

Highlights from Facility and Condition Assessment:

Fox Run has excellent character as a wild creek corridor with rolling terrain and naturalized vegetation. The Stonehocker site is a historic farm with great views of the Open Space and Thornton's park. The spaces are connected to the regional trail corridor, connecting them to Northglenn and surrounding communities.

Opportunities and Capacity Analysis: The Open Space has potential for recreational amenities like disc golf and additional educational signage. Connectivity through the space is good and can be enhanced with wayfinding signage and limiting social trails to reduce environmental impact and maintain character. Stonehocker Park can be better utilized and updated to accommodate special events and increase educational opportunities.

Existing Usage: Regional trail and community garden users



Grant Park

Size: 7 Acres

Type: Open Space

Location: Washington St.

Key Features: Open space along Grant Ditch and trail.

Highlights from Facility and Condition Assessment: Park can only be access by trail, there is no parking at site or on streets.

Opportunities and Capacity Analysis: The site is a blank slate in the area behind Kiwanis Outdoor Pool. There is a unique opportunity to enhance the site using the trail connection, neighboring parks, and schools.

Existing Usage: Trail users



The Hugh G. Danahy Memorial Park

Size: 4.7 Acres

Type: Community Park

Location: Roseanna Dr. & Livingston Dr.

Key Features: Park connected to Croke Reservoir with a variety of activities.

Highlights from Facility and Condition Assessment:

The park is attached to Croke Reservoir with trails.

There is a large playground with pour-in-place rubber surfacing as well as sports facilities including a basketball court and tennis courts.

Opportunities and Capacity Analysis: The current playground is faded, the picnic shelter is in poor condition, and tennis courts should be updated to reflect current recreation trends. Park has the opportunity to host additional unique features to draw visitors. Current plans to include a bocce ball court and re-lining tennis courts to include pickleball. The site is also the Book Mobile summer location.

Existing Usage: Neighborhood families



Huron Crossing Park

Size: 2.1 acres

Type: Neighborhood

Location: West 117th Ave. & Melody Dr.

Key Features: Multi-use park space serving surrounding neighborhood.

Highlights from Facility and Condition Assessment: Attractive neighborhood park with mature trees. Park also serves as a detention basin. The park may not connect to regional rails.

Opportunities and Capacity Analysis: Potential to update the park's play equipment and the addition of a ping pong table and a picnic area. Limited opportunities to expand due to adjacent detention basin.

Existing Usage: Surrounding neighborhood families



Jaycee Park and Bill Goodspeed Happy Tails Dog Park

Size: 9.2 Acres

Type: Community

Location: Leroy Dr. & Irma Dr.

Key Features: Special use community park with ballfield and dog park.

Highlights from Facility and Condition Assessment: Park focuses on dedicated use of baseball field, softball field, and dog park. Good connection to nearby trail and mature trees on park's northwest corner.

Opportunities and Capacity Analysis: Potential enhancements include renovations to the restroom, storage, and scorekeeper's booth as well as the potential to add picnic tables, a small play area, and seating for spectators.

Existing Usage: Community members



J.D. Cayton Park

Size: 2.3 Acres

Type: Neighborhood Park

Location: W 103rd Pl. & Croke Dr.

Key Features: Park neighboring Hillcrest Elementary School

Highlights from Facility and Condition Assessment: Site is the neighboring open turf area adjacent to school. There are picnic tables, mature trees in corners, and a loop path.

Opportunities and Capacity Analysis: The park would benefit from the addition of park amenities, a signature feature, a shelter, and new trees.

Existing Usage: Neighborhood families and adjacent school.



Kiwanis Park and Pool

Size: 2.3 Acres

Type: Special Use

Location: Leroy Dr. & Garland Dr.

Key Features: City outdoor pool facility

Highlights from Facility and Condition Assessment: Park currently provides an outdoor pool and splash pad for visitors. The splash pad and pool building were recently renovated.

Opportunities and Capacity Analysis: Several features should be upgraded including the pool and pool deck piping. The pump house is currently being upgraded and the City will add a new pavilion.

Existing Usage: Community



Larson Glenn Park

Size: 1.3 Acres

Type: Neighborhood

Location: Larson Ln. & E 112th Pl.

Key Features: Small neighborhood serving park with turf and basketball court.

Highlights from Facility and Condition Assessment: Park has no playground or other play equipment. Use is limited to basketball court and open turf area. Park is landscaped with ornamental grasses along edge of E 112th Ave. to the south.

Opportunities and Capacity Analysis: Parking is available but poorly laid out and defined next to the basketball court. Should consider rethinking basketball court and adding play features. The park is surrounded by busy streets and has power lines overhead, additional screening should be considered to improve park feel. The site has potential to be a mini pitch location.

Existing Usage: Neighborhood residents, teens, and older children.



Larson Park

Size: 2.7 Acres

Type: Neighborhood

Location: Larson Dr. & E 108th Ave.

Key Features: Unique neighborhood park with themed playground equipment and exercise stations.

Highlights from Facility and Condition Assessment: Large evergreen trees around perimeter define edges and establish park space. Access to park is only from the street side. Current park features include a large playground with varied equipment suitable for children of all ages with pour-in-place rubber surfacing. Additionally, there is an exercise equipment pod available for park users.

Opportunities and Capacity Analysis: Plan to upgrade exercise equipment. There is limited accessibility to the park with the only access being from the street.

Existing Usage: Neighborhood residents



Malley Park

Size: 3.6 Acres

Type: Neighborhood

Location: Malley Dr & Marion St.

Key Features: Large open turf located next to Malley Drive Elementary School

Highlights from Facility and Condition Assessment:

This is a joint park and school site with a large turf area, two backstops, and perimeter of large shade trees. The park space is well defined and well connected to the surrounding neighborhood with walking loop around perimeter. Parking is available off-street at the school.

Opportunities and Capacity Analysis: There is an opportunity to provide more facilities to the park space including play amenities and a gathering spot or pavilion.

Existing Usage: Neighborhood families and school.



North Park at Fox Run

Size: 2 Acres

Type: Neighborhood

Location: Fox Run Pkwy. & Columbine St.

Key Features: Small neighborhood park connected to Fox Run system.

Highlights from Facility and Condition Assessment: Almost identical to South Park at Fox Run with circular basketball court and small turf area. There is good sidewalk connectivity to adjacent houses from all sides.

Opportunities and Capacity Analysis: There is an opportunity to make park more unique by adding more play diversity and gathering spaces with picnic tables. Additionally, more trees should be planted for natural shade.

Existing Usage: Neighborhood families



Northglenn Recreation Center

Size: 13.6 Acres

Type: Special Use

Location: 1 E Memorial Pkwy.

Key Features: New development supporting the Recreation Center building.

Highlights from Facility and Condition Assessment:

Park is the newly developed area surrounding the Recreation Center including the Veterans Memorial and Festival Lawn. The site hosts a variety of events using the Lawn and connects to the Rec Center to E.B. Rains Jr. Memorial Park to the west.

Opportunities and Capacity Analysis: Opportunity to continue enhancing the site and developing a community center with neighboring old Northglenn Rec Center site development.

Existing Usage: Recreation Center visitors and community events



Northwest Open Space

Size: 54 Acres

Type: Regional Park

Location: N. Pecos St. & Roseanna Dr.

Key Features: Regional park focused on sports uses.

Highlights from Facility and Condition Assessment:

Park is a large open area with wide, open turf areas for field sports. There are also unlit ball fields, play equipment for young children, and seating areas. The park has good connections to surrounding neighborhoods through the Highline Trail running along the park's north side.

Opportunities and Capacity Analysis: The park was recently renovated, and all equipment and facilities are in good condition. There is limited existing shade for spectators on site and a need to continue planting shade trees in the park.

Existing Usage: Recreational sports



Oscar Arnold Nature Preserve

Size: 76.4 Acres

Type: Nature Area

Location: W 112th Ave & Ranch Dr.

Key Features: Unprogrammed open space.

Highlights from Facility and Condition Assessment:

Site is well connected through social trails and Highline Canal Trail connection. Provides an urban buffer for neighborhood. Site has central wetland and small shelter.

Opportunities and Capacity Analysis: The park serves its purpose as a nature area. Usage could benefit from more formalized soft surface trails and gathering spaces as well as the addition of trail signage.

Existing Usage: Trail users



Pasture Park

Size: 1.3 Acres

Type: Neighborhood Park

Location: 124th Ave. & Irma St.

Key Features: Park in a new development focused on placemaking

Highlights from Facility and Condition Assessment: Site is a new park developed and maintained by the special district. The park has a looped path surrounding the green space and landscaped border.

Opportunities and Capacity Analysis: Opportunity to ensure that the park provides gathering spaces and adequate shade until trees mature. Potential trail connectivity with the Karl's Farm development.

Existing Usage: Neighborhood residents

Note: Owned and operated by special district



Rotary Park

Size: 2.9 Acres

Type: Neighborhood

Location: N. Pecos St. & Roseanna Dr.

Key Features: Neighborhood park located next to Westview Elementary School.

Highlights from Facility and Condition Assessment: Park is an open turf area with a ball field and limited other amenities. Site has mature trees in one corner with lots of other newly planted trees.

Opportunities and Capacity Analysis: There are funds available for shelter which should be placed in the southwest corner. Should also consider ball field improvements.

Existing Usage: Neighborhood families and ball field users



Scout Park

Size: 3.1 Acres

Type: Undeveloped

Location: E 112th Pl

Key Features: Blank slate with opportunities to develop.

Highlights from Facility and Condition Assessment:

The park offers open space and native greenery. It is a blank slate with connections to I-25 which connects to trails.

Opportunities and Capacity Analysis: Potential opportunities to enhance Scout Park include adding park amenities and incorporating a bicycle path. Since Scout Park is used for archery, there is potential for formalizing it as an archery park and bike park.

Existing Usage: Limited



Sperry Park

Size: 2.7 Acres

Type: Improved Park - Neighborhood

Location: Sperry St. & Utrillo Ln.

Key Features: Neighborhood park in a quiet neighborhood with playground, small basketball court, and looped path connecting to sidewalks

Highlights from Facility and Condition Assessment:

Park has large, established native trees with a good mix of play equipment and recreational activities.

Connectivity through the park is good with the paved loop connecting to the sidewalks.

Opportunities and Capacity Analysis: Potential enhancements include an addition of a picnic shelter once trees need removed, replacing or removing old picnic table asphalt pads, and addition of a signature amenity.

Existing Usage: Neighborhood families



South Park at Fox Run

Size: 1.5 Acres

Type: Neighborhood

Location: Fox Run Parkway

Key Features: Quiet neighborhood park within the Fox Run Park system.

Highlights from Facility and Condition Assessment:

This park features circular basketball courts with benches for spectators, as well as play equipment for toddlers (ages 2-5) and an open turf area. It is overall a good quality neighborhood park with a new urbanist character. South Park lacks shade near the play area and picnic tables. Connectivity is good via neighborhood trails. The off-street trails connect to Fox Run Park system.

Opportunities and Capacity Analysis: Potential enhancements include additional equipment and play areas for older children as well as planting trees for shade.

Existing Usage: Neighborhood families with toddlers and younger children



Village Greens I

Size: 1.1 Acres

Type: Neighborhood

Location: E. 116th Ave. & Pennsylvania St.

Key Features: Small neighborhood park with play features and seating.

Highlights from Facility and Condition Assessment:
Open space park with many trees for shade. Although there is not a connection to regional trails, there is connectivity to adjacent housing.

Opportunities and Capacity Analysis: Possible improvements include the addition of a pavilion and gathering spaces. The park could benefit from incorporating a unique amenity and enhanced connectivity on the Southern end.

Existing Usage: Neighborhood families



Village Greens II

Size: 1.1 acres

Type: Neighborhood

Location: E. 116th Ave. & Sherman St.

Key Features: Small neighborhood park with play features and seating.

Highlights from Facility and Condition Assessment: Park has nice, established trees, a shaded playground and lighting. There are connections to nearby streets and housing.



Opportunities and Capacity Analysis: Potential enhancements include the addition of park amenities, a pavilion, and gathering spaces. A unique feature to compliment the neighborhood would benefit the park. Improvements to play and picnic area accessibility from the southern entrance and additional evergreen trees could be beneficial.

Existing Usage: Neighborhood families



Wyco Park

Size: 6.8 Acres

Type: Neighborhood

Location: W. Wyco Dr. & E 117th Way

Key Features: Integrated school and park site.

Highlights from Facility and Condition Assessment:

Park has shared amenities with neighboring school, the STEM Lab. The site has three lit tennis courts, a large open turf area, entry with sculpture, and access to school playground equipment. There is good connectivity to surrounding neighborhoods with a perimeter trail around the park.

Opportunities and Capacity Analysis: Opportunities to add gathering space or a pavilion in the northeast corner, refurbish the tennis courts and convert one to pickleball, and continue planting trees.

Existing Usage: Neighborhood families and surrounding schools

