

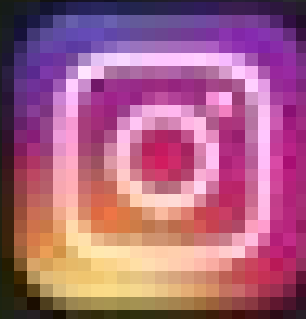
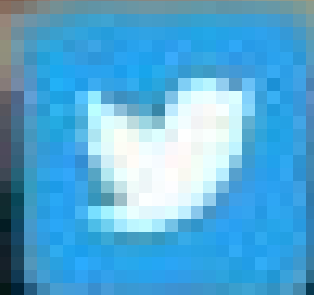


E-470 AND EXPRESSTOLL

Jessica Carson, E-470 Director of Public Affairs

December 4, 2023

Stay Connected



E470

Express



AGENDA

1. E-470's Mission and Vision
2. About Us and Background on E-470
3. Traffic Trends and toll rate reductions
4. Regional Partner
5. Capital Projects
6. Commitment to Safety
7. Environmental Stewards
8. Economic Impact in the Region
9. Operational and Customer Service Statistics
10. Questions and Answers
11. Contact Information



E-470'S PURPOSE STATEMENT

We improve your journey

MISSION

We improve your journey through safety, service, stewardship and reliability.

VISION

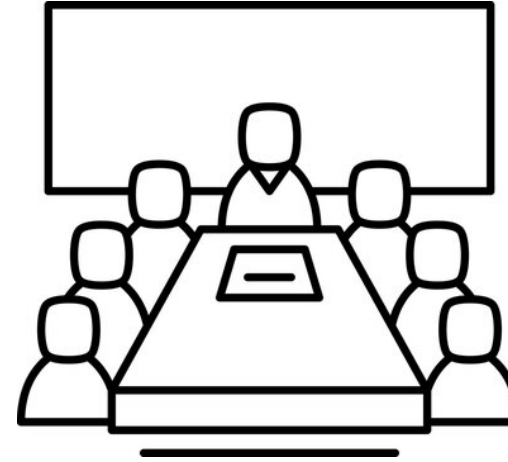
Providing exceptional mobility solutions by connecting people and embracing transformative opportunities.

DESIRED OUTCOME

For the Authority's mission and vision to work hand in hand, E-470 will identify the appropriate perspectives from which we need to analyze and assess the organization.

ABOUT US

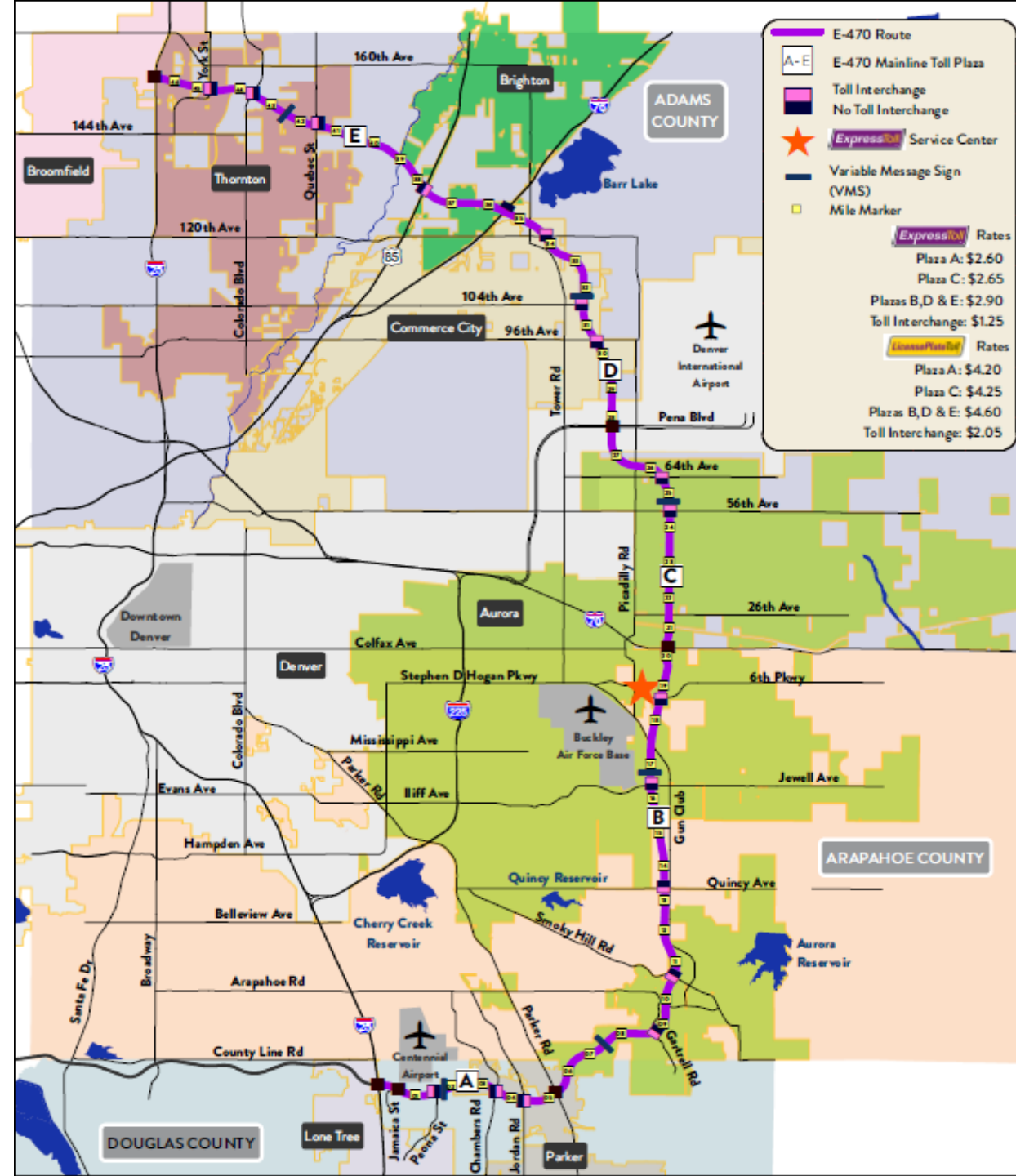
- Colorado political subdivision
- Local government owned and operated
- Governed under PHA law by a Board of Directors:
 - **8 Voting Members**
 - Parker, **John Diak, Board Chair**
 - Aurora, **Françoise Bergan, Vice Chair**
 - Commerce City, **Craig Hurst, Secretary**
 - Brighton, **Jan Pawlowski, Treasurer**
 - Adams County, **Chaz Tedesco, Commissioner**
 - Arapahoe County, **Bill Holen, Commissioner**
 - Douglas County, **George Teal, Commissioner**
 - Thornton, **Tony Unrein, Council Member**



- **8 Non-Voting Members**
 - Arvada
 - Broomfield
 - CDOT
 - DRCOG
 - Greeley
 - Lone Tree
 - RTD
 - Weld County

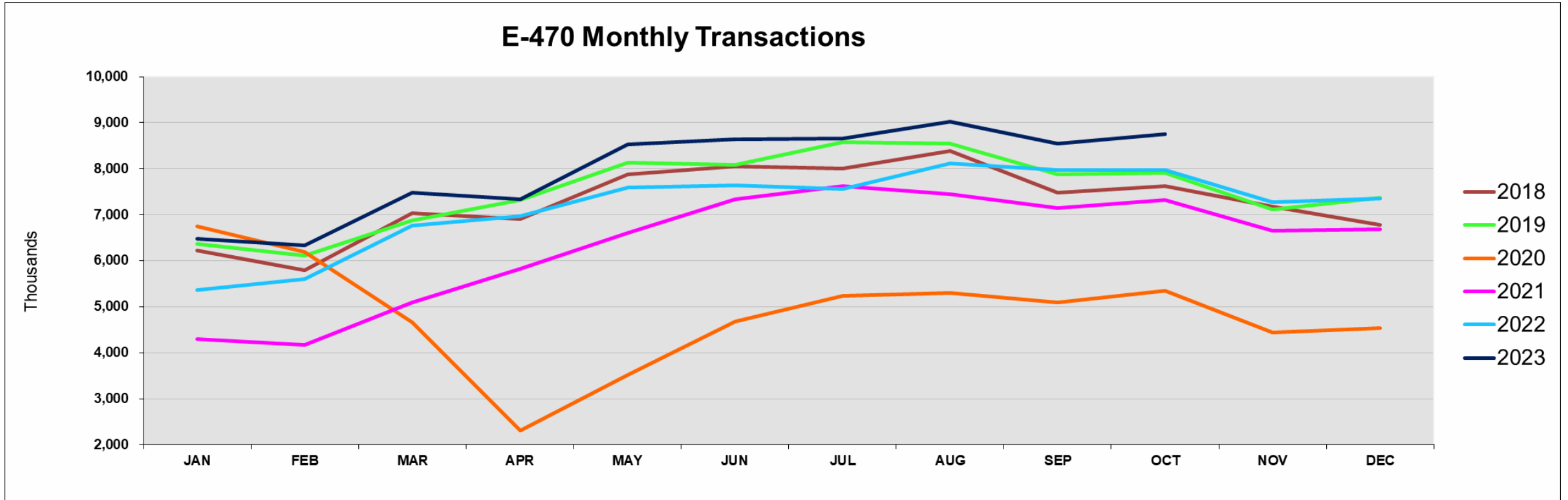
BACKGROUND

- 47-mile all-electronic public toll road
- 1991 – Opened first segment (south)
- 2001 – Launched the Safety Foundation
- 2003 – Opened last segment (north)
- 2009 – Conversion to cashless tolling
- User-financed: **NOT TAX FUNDED**
- \$1.3 billion in outstanding bond debt
- Current Annual debt payments \$100 million
- Scheduled to be paid off in **2041**



MONTHLY TRANSACTION TRENDS

Through October 2023



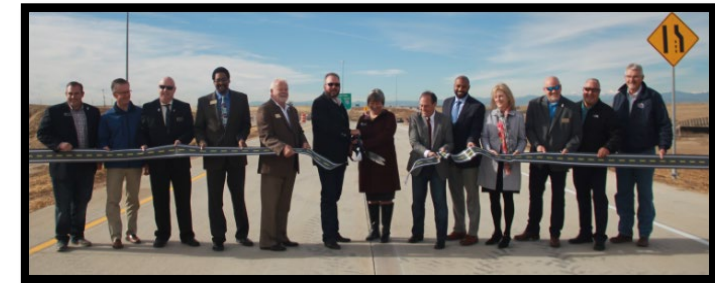
REDUCING TOLLS AND ELIMINATING FEES

- **Toll Rate Reductions and Adjustments**
 - **2023:** Froze ExpressToll and LPT rates
 - **2022:** Reduced ExpressToll and License Plate Toll® (LPT) rates
 - **2020-Present:** Reduced 3+ Axle ExpressToll® rates
 - **2020-2021:** Froze LPT rates
 - **2018-2021 (4 Years):** Froze ExpressToll rates
 - **2018:** Reduced Rate at Toll Plaza C
- **Elimination of Fees**
 - **2018:** Vehicle Registration
 - **2017:** Highway Expansion Fees



REGIONAL PARTNER

- Riverdale Bluffs Trail – **Adams County**
- Quincy Avenue/Gun Club Road Interchange – **Arapahoe County and City of Aurora**
- Future Parker Road Overpass for High Plains Trail – **Arapahoe County**
- Stephen D. Hogan Parkway – **City of Aurora**
- 38th and 48th Avenue Interchange – **City of Aurora**
- Sable Interchange – **Brighton and Adams County**
- Quebec Interchange – **City of Thornton**
- Tower Road/Peña Ramp – **Commerce City**
- 120th Avenue Interchange Signals – **Commerce City**
- Chambers Interchange – **Douglas County**
- Electrical Charging – **RAQC**
- Future Intersection Signals – **Master Plan**



UPCOMING CAPITAL IMPROVEMENTS

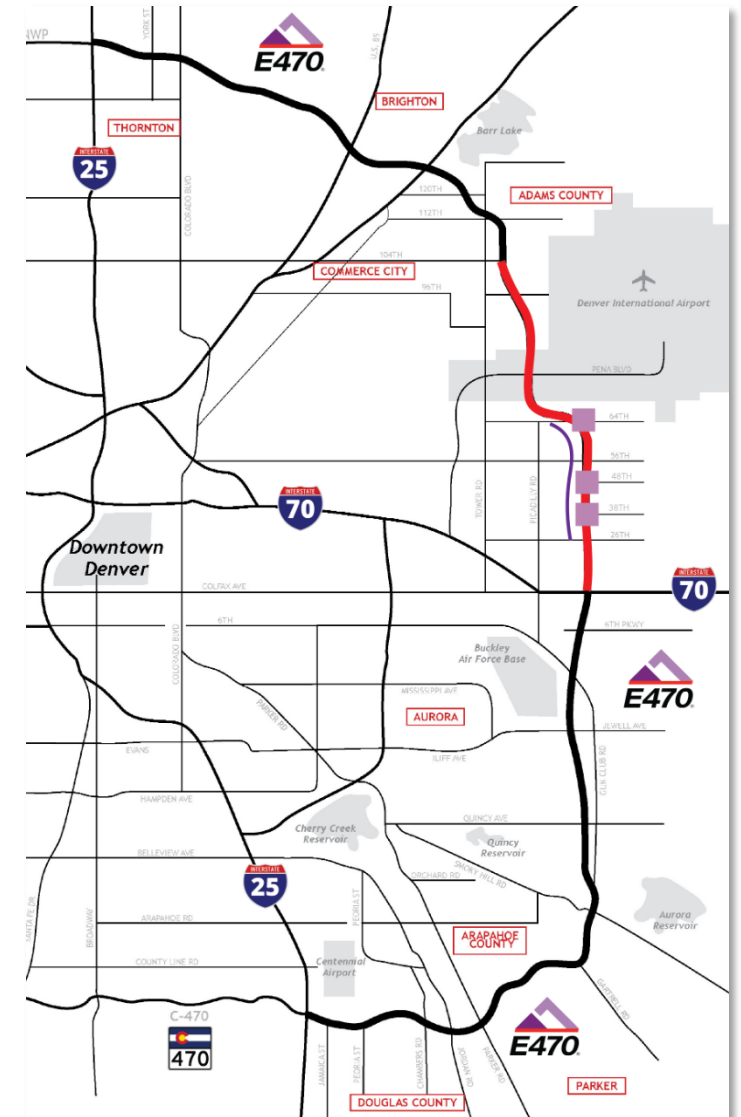
- Self-funded **Capital Plan** 2022-2026 (5 Years) estimated at \$500M
- Reinvests back into the roadway through several improvements:
 - Ongoing Road Widening Project
 - New interchanges to stay ahead of development & growth
 - Trail extensions
 - Technological advances in lane toll system & back office
- E-470's 2020 **Master Plan** identifies more than \$1.5B in capital, infrastructure, and improvements between 2020-2040



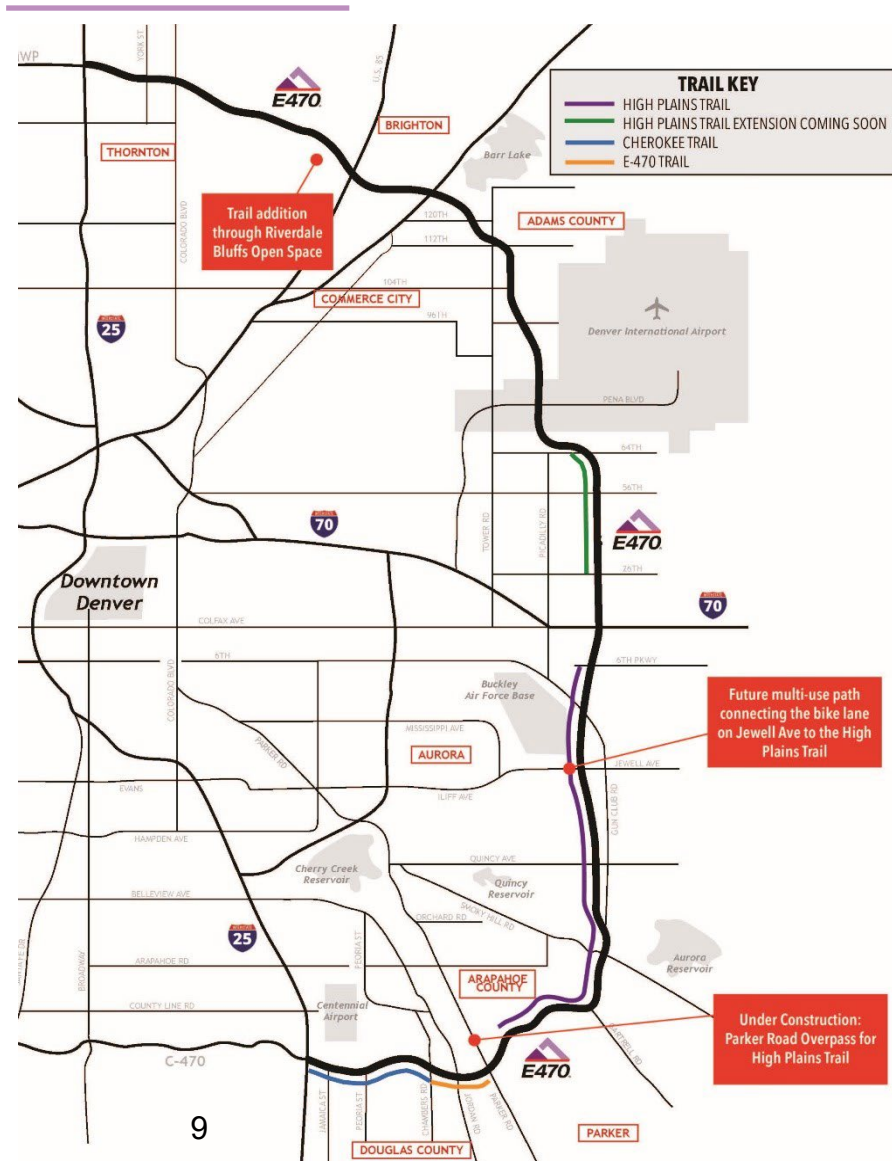
ROADWAY WIDENING & TRAIL EXPANSION PROJECT

CURRENT PHASE: I-70 to 104th Ave (11 miles)

- Construction kicked-off September 2022
- Anticipated to be complete in 2025
- Widening to 3 travel lanes each direction; bridges for ultimate build out of 4 travel lanes
- Other Travel Enhancements:
 - 38th Ave – New Interchange
 - 48th Ave – New Interchange
 - 64th Ave – Expansion
 - Pena Blvd – Expansion
 - High Plains Trail - Expansion 26th to 64th Avenues



FROM THE TOLLWAY TO THE TRAILWAY



- E-470 has built more than **12.5 miles** of the High Plains Trail
- Trail will be extended **another 4 miles** with latest road widening project
- Goal is to provide better connections for people on foot and on bikes to existing trails in the region including the Cherry Creek, Piney Creek, Happy Canyon, and C-470 Trails
- E-470 plans to continue partnering with its member jurisdictions on other trail projects in the region.



COMMERCIAL VEHICLE SUPPORT

- E-470 named HAZMAT route
 - Effective Spring 2022
 - Created safer routes for neighboring jurisdictions
- Extended 3+ Axle Pilot Program
 - Offering discounts to commercial vehicles on E-470



COMMITMENT TO SAFETY

- Wrong-way driver prevention
- Cable barrier to prevent crossover
- Deer fence installation
- Variable Message Signs
- 24/7 Proactive Traffic Management
- Snow Removal
 - **4** maintenance facilities
 - **12** weather stations
 - **280,000 gallons** liquid treatment
 - **9,600 tons** solid deicer
 - **22** snowplows
 - **Snow fencing** to prevent drifting



 **\$70 Million Avoided
Cost of Accidents**



SAFETY MEETS SERVICE *470

- Free 24/7 Roadside Assistance for all motorists
- Services offered free of charge:
 - Flat tire assistance
 - Fuel & fluid refills
 - Jumpstarts
 - Cell phone service
- Other services provided:
 - Debris & hazard material removal
 - Traffic control during incidents
- Roadside Assistance | By the numbers (2022):
 - **9** minute average response time
 - **1** hour average incident clearance
 - **6,000** customer assists
 - **12,000** roadside assistance calls



ENVIRONMENTAL STEWARDS

- **Improving Water Quality**
- The Cherry Creek and Barr Milton Watersheds adjacent to E-470
- E-470 plays a role in keeping those watersheds clean
 - Done through a Non-Standard MS4 Permit extended through 2026
 - E-470 also educates customers about reducing pollutants
 - E-470 utilizes best management practices such as spraying to remove unwanted vegetation to minimize use of herbicides



Supporting Electric Vehicles (EV)

- Upgraded EV charging stations outside ExpressToll Service Center walk-up entrance (2022)
 - Allows four EVs to charge simultaneously vs two
 - Delivers an **80% charge** in approximately **30 minutes**

SOLAR POWERED ROAD

15

**solar
arrays**

11

**years
energy
production**

12

**million total kWh
solar energy
produced**

2

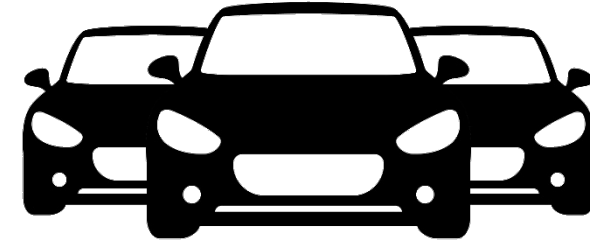
**buildings
with solar
arrays**

13

**ramps with
solar
arrays**



2022 OPERATING STATISTICS



- **Total transactions processed through E-470's back office**

- 132 million transactions
- 23% increase from 2021

- **E-470 Total Transactions**

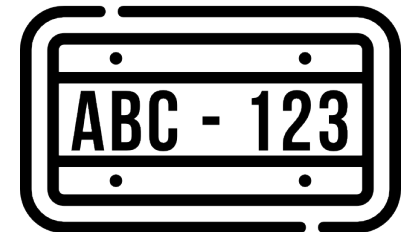
- 86.2 million transactions
- 54% of total transactions in CO
- 12% increase from 2021

- **Total Customer Service Calls**

- 870,855 calls serviced
- 3.5% increase from 2021

- **Total License Plate Images Reviewed**

- 74.4 Million images reviewed
- 20% decrease from 2021



- **New ExpressToll Accounts Opened**

- 150,400 accounts opened
- 18% increase from 2021



CUSTOMER SERVICE IS A TOP PRIORITY

- **ExpressToll Customer Satisfaction**
 - 4.66 Stars out of 5
- **E-470 Road Conditions Satisfaction**
 - 4.61 Stars out of 5
- **Most Important Item to Customers**
 - E-470 kept free of snow
- **#1 Reason Customers Choose E-470**
 - E-470 Saves Time!

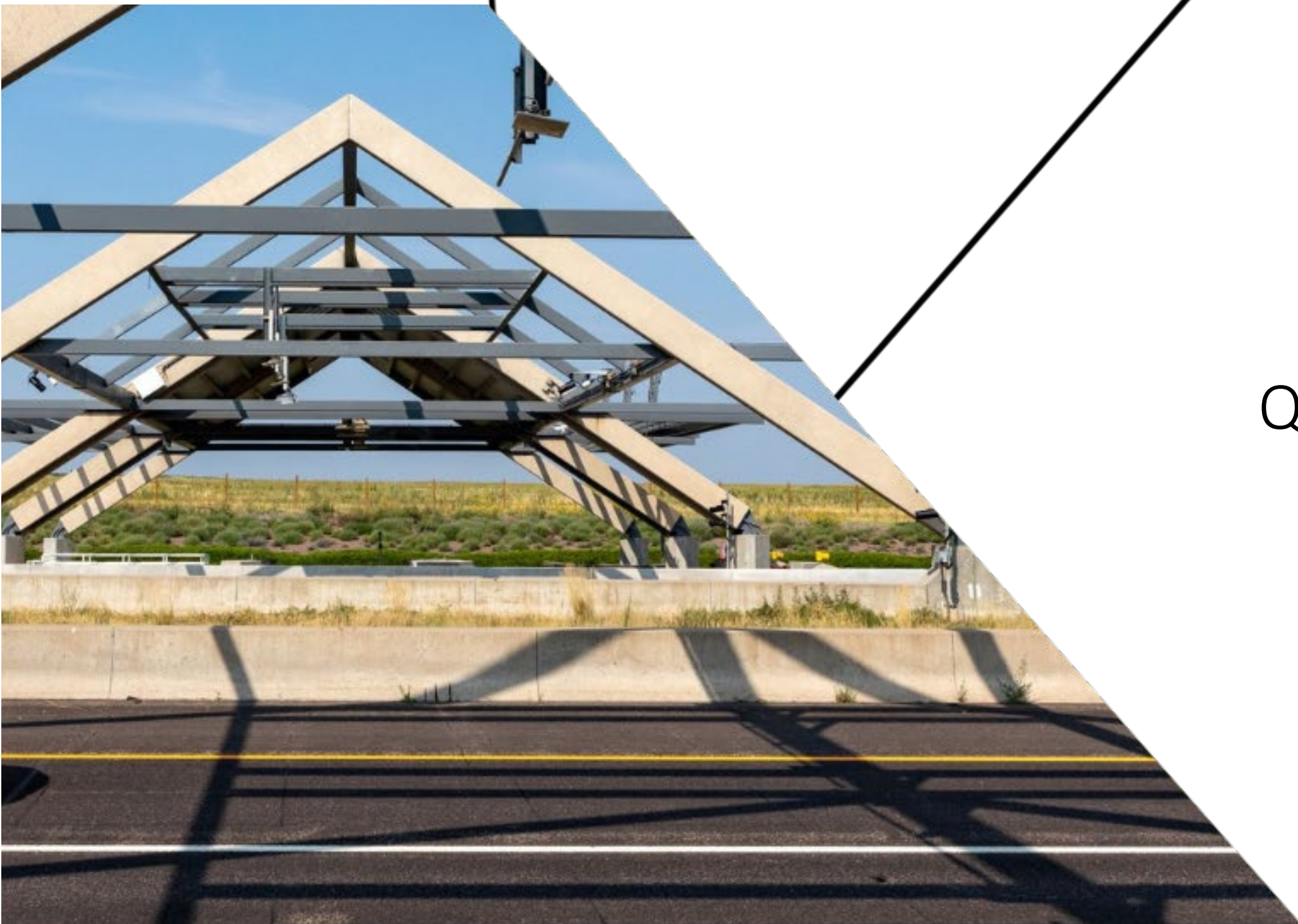


**\$354.5
MILLION
NET VALUE
OF TIME**



**43.2
MILLION
HOURS
SAVED**





QUESTIONS

CONTACT US

- Jessica Carson
 - E-470 Public Affairs Director
 - (303) 877-7334
 - jcarson@e-470.com

