

## RTD FasTracks North Metro Rail Line

Rapid Transit	Commuter Rail	Park-n-Ride	N

Map is not to scale

*"We're proud of how our regional collaboration brought FasTracks to life, and how we continue to work together to get it done."*  
—Phillip A. Washington, RTD General Manager



**One region. One mission.**

Regional Transportation District  
303.299.2000 | rtd-denver.com



*"We're proud of how our regional collaboration brought FasTracks to life, and how we continue to work together to get it done."*  
—Phillip A. Washington, RTD General Manager



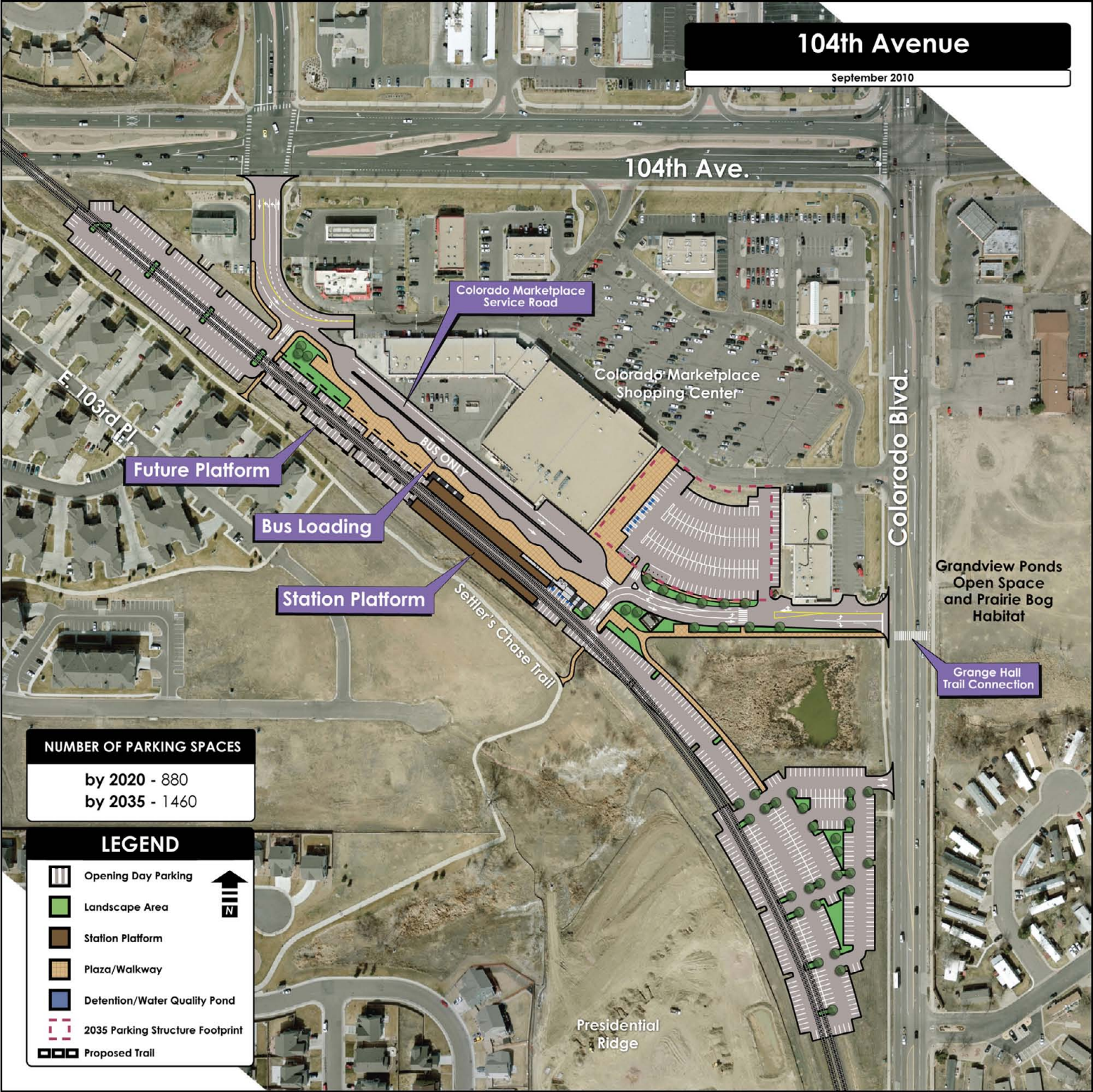
**One region. One mission.**

Regional Transportation District  
303.299.2000 | [rtd-denver.com](http://rtd-denver.com)



# 104th Avenue

September 2010



## NUMBER OF PARKING SPACES

by 2020 - 880

by 2035 - 1460

## LEGEND

- Opening Day Parking
  - Landscape Area
  - Station Platform
  - Plaza/Walkway
  - Detention/Water Quality Pond
  - 2035 Parking Structure Footprint
  - Proposed Trail
- N



**NUMBER OF PARKING SPACES**

by 2020 - 310

by 2035 - 1200

Station Platform

Future Platform

Bus Loading

Unnamed Neighborhood Trail Missing Link 2 (Proposed By Others)

**LEGEND**



Opening Day Parking

Landscape Area

Station Platform

Plaza/Walkway

Detention/Water Quality Pond

2035 Parking Structure Footprint



Proposed Trail



112th Ave.

112th Avenue

September 2010





**NUMBER OF PARKING SPACES**

by 2020 - 410

by 2035 - 960

Proposed  
UPRR Trail  
(By Others)

Eastlake  
Granary

Road  
Relocated

Bus Loading

Station Platform

Future Platform

Potential Future  
Parking and  
Pedestrian  
Underpass  
(By Others)

**LEGEND**

- Opening Day Parking
  - Landscape Area
  - Station Platform
  - Plaza/Walkway
  - Detention/Water Quality Pond
  - 2035 Parking Structure Footprint
  - Proposed Trail
- 

**124th Avenue/Eastlake**

September 2010

