

AGENDA
Webster Lake Promenade Plaza
Task Force Meeting #1
September 24, 2014
5:30 PM - 7 PM
Northglenn City Hall (WES conference room)

Our Design Concepts team is committed to a process that builds upon past efforts and capitalizes on our own expertise to create a space that all stakeholders can value, support, and enjoy for years to come!

1. Previous Concepts
 - a. What worked? We understand the following elements to be essential to this project:
 - Invitation
 - Identity
 - Continuity
 - Connectivity
 - Road buffers
 - Festival atmosphere
 - Interactive elements
 - Walkability
 - b. What did not work? What elements or aspects of past concepts should our team avoid?
 - Input?
2. Project Expectations
 - a. One single concept
 - b. Developed as three tiered versions based on estimated project cost:
 - 1)\$250K
 - 2)\$500K
 - 3)\$800K
 - c. Project Goals:
 - **Connectivity** between park, recreation center, theatre, shopping/restaurants
 - **Intimate gathering space**
 - **Positive identity**, sense of arrival in Northglenn!
 - **A “seamless experience”** encourages passage through plaza space to other recreation opportunities—keep people from getting back in the car
 - **Public art**
 - **Visibility** from various nearby locations, including the I-25 corridor
3. Project Timeline
 - a. Six (6) month concept plan process
 - b. Construction documentation to begin following final concept plan
 - c. Five (4) Project Review Meetings
 - Initial Task Force Meeting (Wednesday, September 24, 5:30 PM)
 - 1st Follow-up Task Force Meeting (November 5, 5:30 PM)
 - Refinement Task Force Meeting (December 17, 5:30 PM)
 - Final City Council Workshop (Monday, March 2, 2015 @ 6:00 PM)
4. Next Steps...
 - a. Initial concept development
 - b. Working group review
 - c. Concept refinement
 - d. Task Force Review 11/5



WEBSTER LAKE PROMENADE PLAZA LEADERSHIP COMMITTEE RESPONSIBILITIES

Voting Members

Chris DeMay – NURA
Rosie Garner – NAHF
Rory Moore – Youth Commission
Brian Ocepek – P & R Advisory Board
Kim Snetzinger – City Council

Non-Voting Staff Members

Dana Kester – Project Manager
Amanda Peterson – P&R Director
Michael Stricker – NAHF Executive Director
Debbie Tuttle – NURA Executive Director

Design Team

Axel Bishop
Carter Marshall

1. Background

The Leadership Committee was originally developed in order to help develop concept plans for the Webster Lake Promenade Plaza (Plaza). After numerous meetings, the committee agreed to several concepts, which will now go forward to the design phase of the project.

2. Purpose

The Leadership Committee will play a critical role in helping the Design Team to develop the design at the Plaza and selecting the Plaza art. The Committee's role is very important because the legacy of this project will be appreciated long into the future by Northglenn's citizens and visitors.

3. Protocol

In order to take full advantage of the art and design selection process, each Committee Member must commit to attending each meeting throughout the life of the project. The design portion of the project will take approximately four meetings. It is important that each Committee Members arrive on time and participate fully in all of the meetings.

4. Committee Member Roles and Responsibilities

The Leadership Committee is comprised of voting and non-voting members. It is the specific role of voting members to help the design team develop the project. The final recommendation will be forwarded to the Northglenn City Council and Northglenn Urban Renewal Authority for approval.

The voting Committee Members will make decisions as a group with the goal of consensus. If a consensus cannot be reached, majority voting will be employed.

The non-voting members play a critical role in assisting the Committee by providing technical information regarding aspects of the project such as facility users, history of the area, building code requirements, safety, durability of materials and other issues.

Each committee member must:

- Represent themselves
- Represent the needs and the interests of the agency they represent
- Report back to the agency they represent

5. Communication

Communication about meetings and periodic project updates will be sent by email through Debbie Tuttle, dtuttle@northglenn.org or 303-450-8743.

In order to ensure the most efficient management of the project, committee members are encouraged to send all communication intended for the design team, to Dana Kester, dkester@northglenn.org or 303-450-8838.

Webster Lake Promenade Plaza Development



City of Northglenn
September 24, 2014



Aerial Site Photo



Concept Sketch

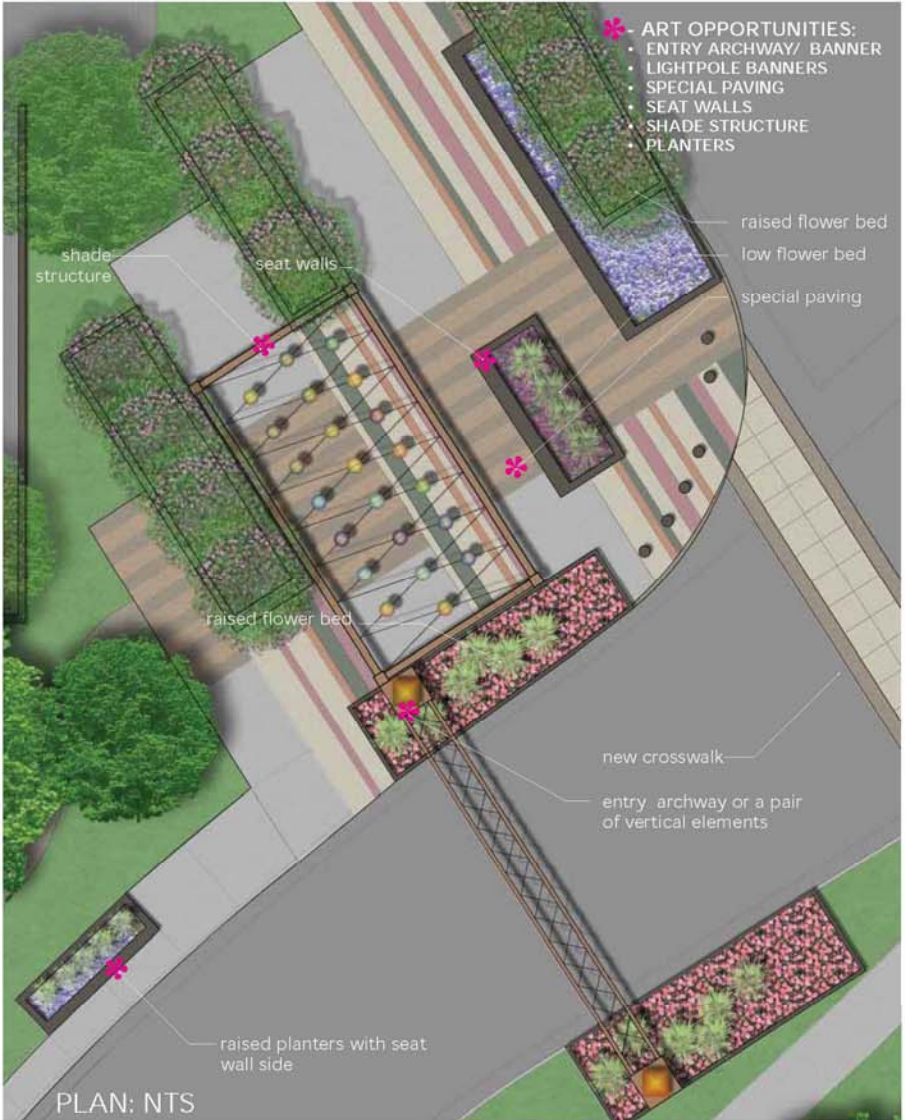
An aerial perspective rendering of a landscape design concept. The scene features a central paved walkway that curves through a green lawn. To the right, a building with a wooden deck and a pergola structure is visible. The deck has a striped pattern and is surrounded by string lights. Several rectangular planters with various plants and flowers are placed along the walkway and near the building. The overall design is modern and functional, with a focus on outdoor living spaces.

Previous Concepts

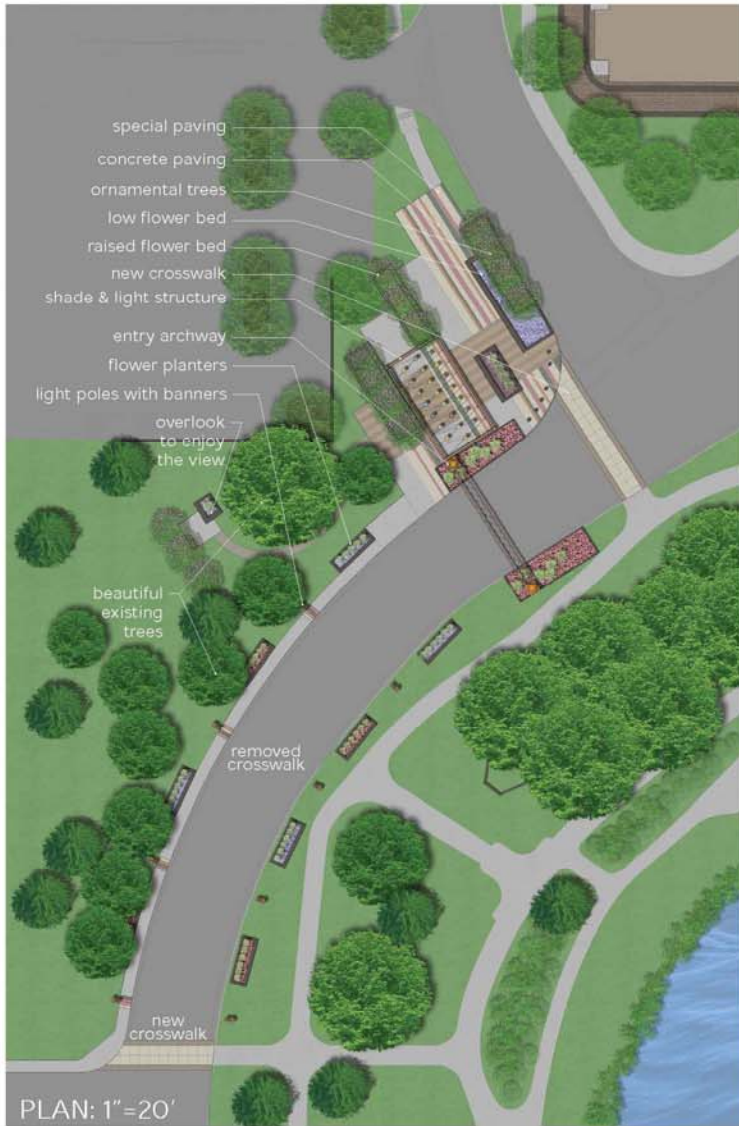


PLAZA CONCEPT: ANNOUNCING NORTHGLENN!

WEBSTER LAKE PLAZA



PLAZA CONCEPT: ANNOUNCING NORTHGLENN! WEBSTER LAKE PLAZA



Plaza ambiance should be:

connected
inviting
playful
warm
eventful

colorful
forward thinking
complement the traditional
shady
multi-cultural

What elements should announce Northglenn?

beautiful existing trees

engaging paving
a gateway

a festival street

place to walk through

great lighting

art

colorful flowers

tall vertical element

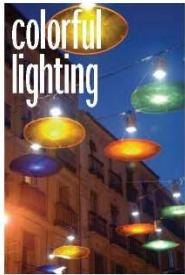
places to sit and enjoy the views

tell the story of Northglenn

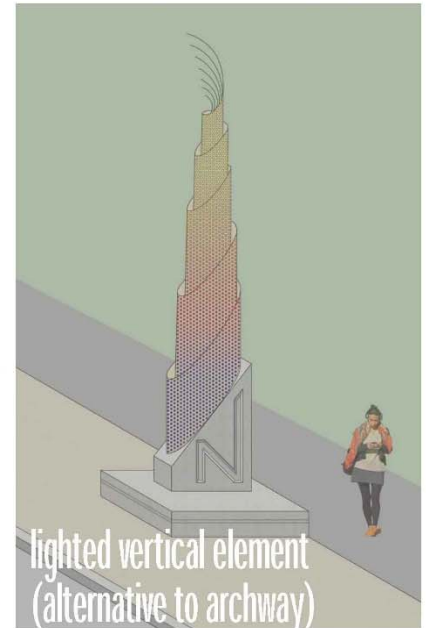


PLAZA CONCEPT: ANNOUNCING NORTHGLENN! WEBSTER LAKE PLAZA

Plaza elements should include:



Entry archway vertical features should be:





What Works?

These elements have been supported by the Task Force:

- ❑ Invitation
- ❑ Identity
- ❑ Interactive elements
- ❑ Continuity
- ❑ Connectivity
- ❑ Walkability
- ❑ Road buffers
- ❑ Festival atmosphere



Are there elements do not fit with this project?

Any that do not fit with the City of Northglenn?

Project Expectations

- ❑ One single concept
- ❑ Three tiered versions based on estimated project cost:
 - ❑ \$250K
 - ❑ \$500K
 - ❑ \$800K

Project Goals

- ❑ **Connectivity** between park, recreation center, theatre, shopping/restaurants
- ❑ An **intimate gathering space** for outdoor dining, gathering, relaxation and play
- ❑ **Positive identity**, sense of arrival in Northglenn!
- ❑ A “**seamless experience**” encourages passage through plaza space to other recreation opportunities—keep people from getting back in the car
- ❑ Integrated **public art**
- ❑ **Visibility** from various nearby locations, including the I-25 corridor

Project Timeline

- ❑ Six (6) month concept plan process
- ❑ Construction documentation to begin following final concept plan
- ❑ Four (4) Project Review Meetings

Next Steps...

1. Initial concept development
2. Working group review
3. Concept refinement
4. Task Force Review 11/5

Site Photos





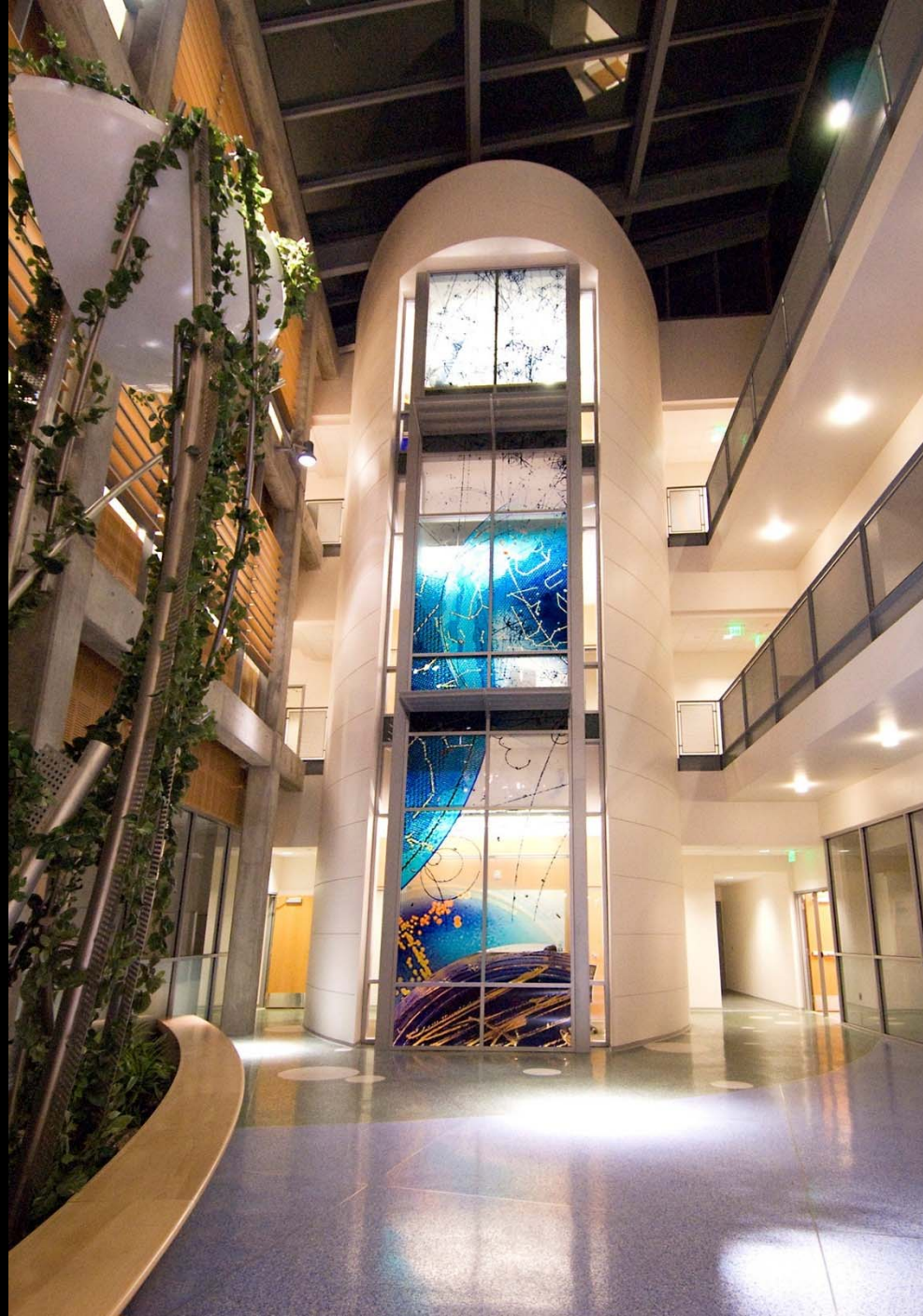




Invitation









Icon











Interaction















Passage



Concept Sketch









Identity



1920 - The Great Depression begins with the Black Thursday stock market crash on October 29.

1928 - Rollo's first motorized fire truck on American LaFrance.

1934 - The Community House at Rollo Mountain Park is built by the Civilian Conservation Corps.

1930 - Rollo Creek breaks, destroying the 3rd Street Bridge.

1933 - Franklin D. Roosevelt takes office as the 32nd President of the United States, ending the holdover period.

1925-1935
Economic Growth & The Great Depression

1929 - Navy flyers land on field near Rollo that later becomes the Garfield County Airport.

1930 - Population 1287.

1932 - The Depression forces the closure of the Rollo town mine and mill.

1936 - Photo is designed of the mine and last plant in the valley area.





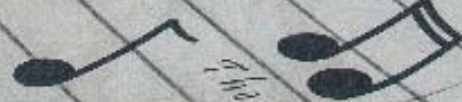
EARTH'S POSITION
LATITUDE 39° 05' N

PIE COLO RADO

LONGITUDE
107° 47' 10.78" W

AND THE HOURS WILL TAKE CARE OF THEMSELVES.
LORD CHESTERFIELD





The shadow from the
Rocky Mountain High...

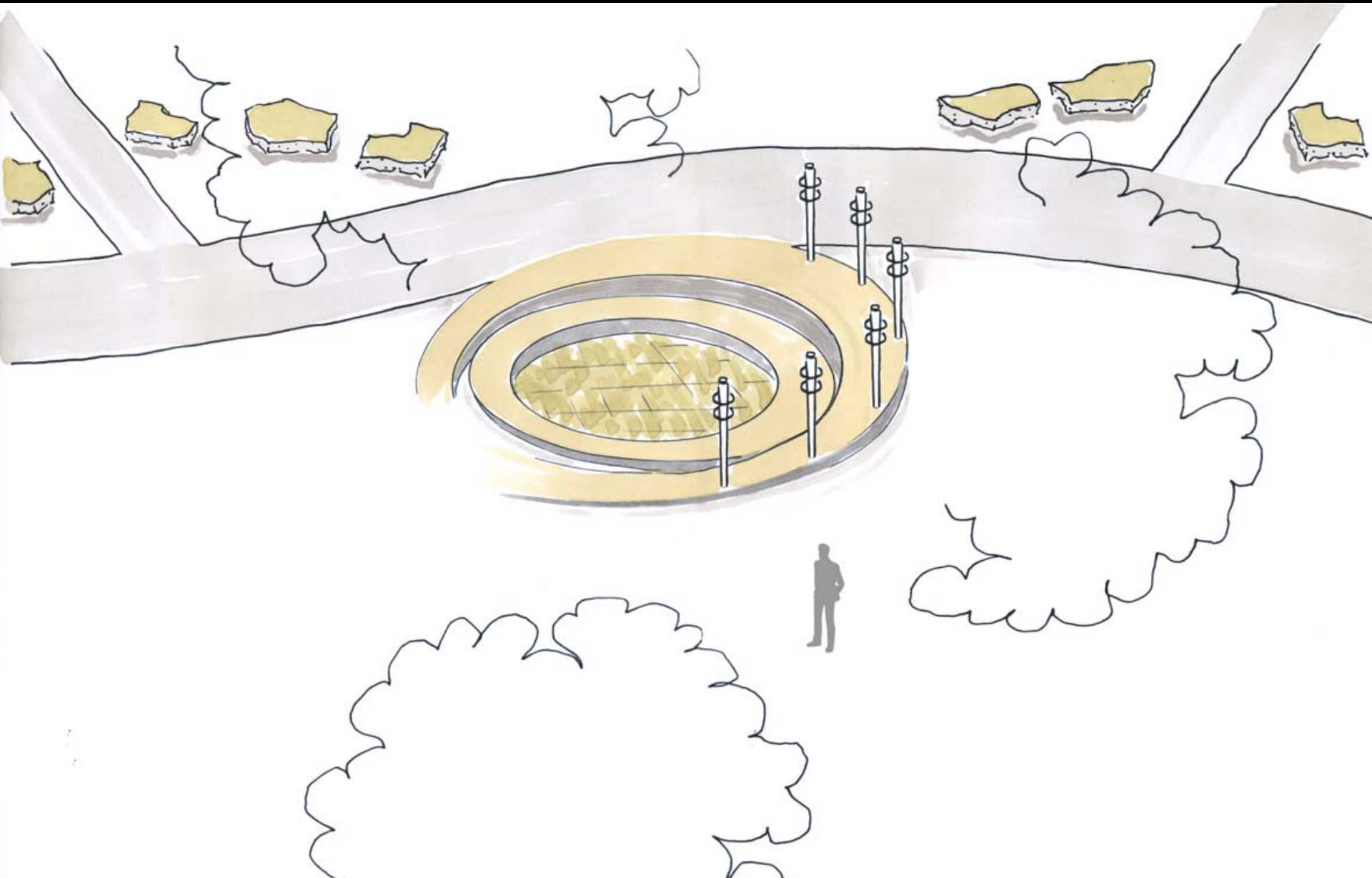
... Colorado Rocky Mountain High
g've seen it



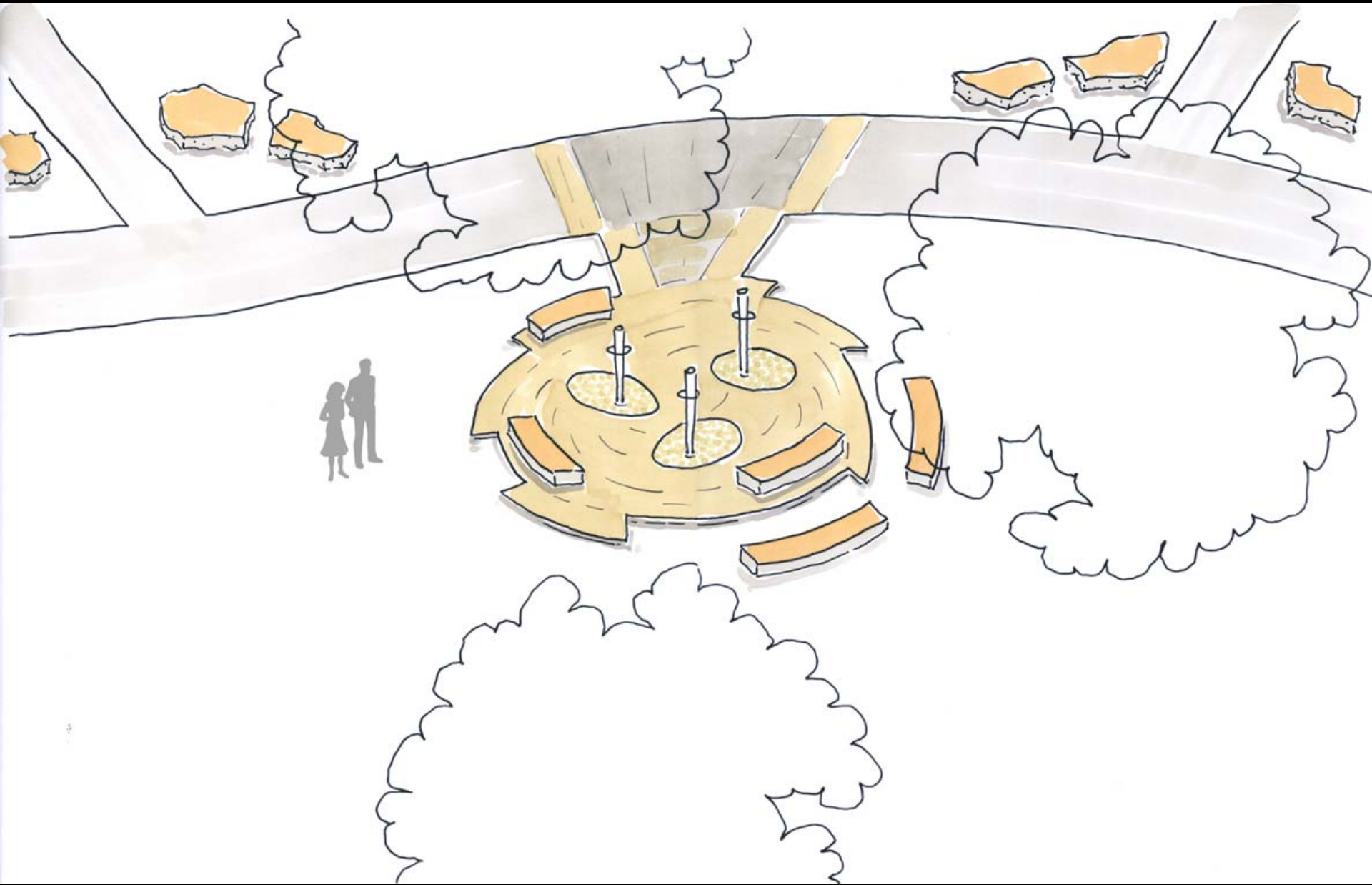
rainin' fire in the s...
starlight is soft



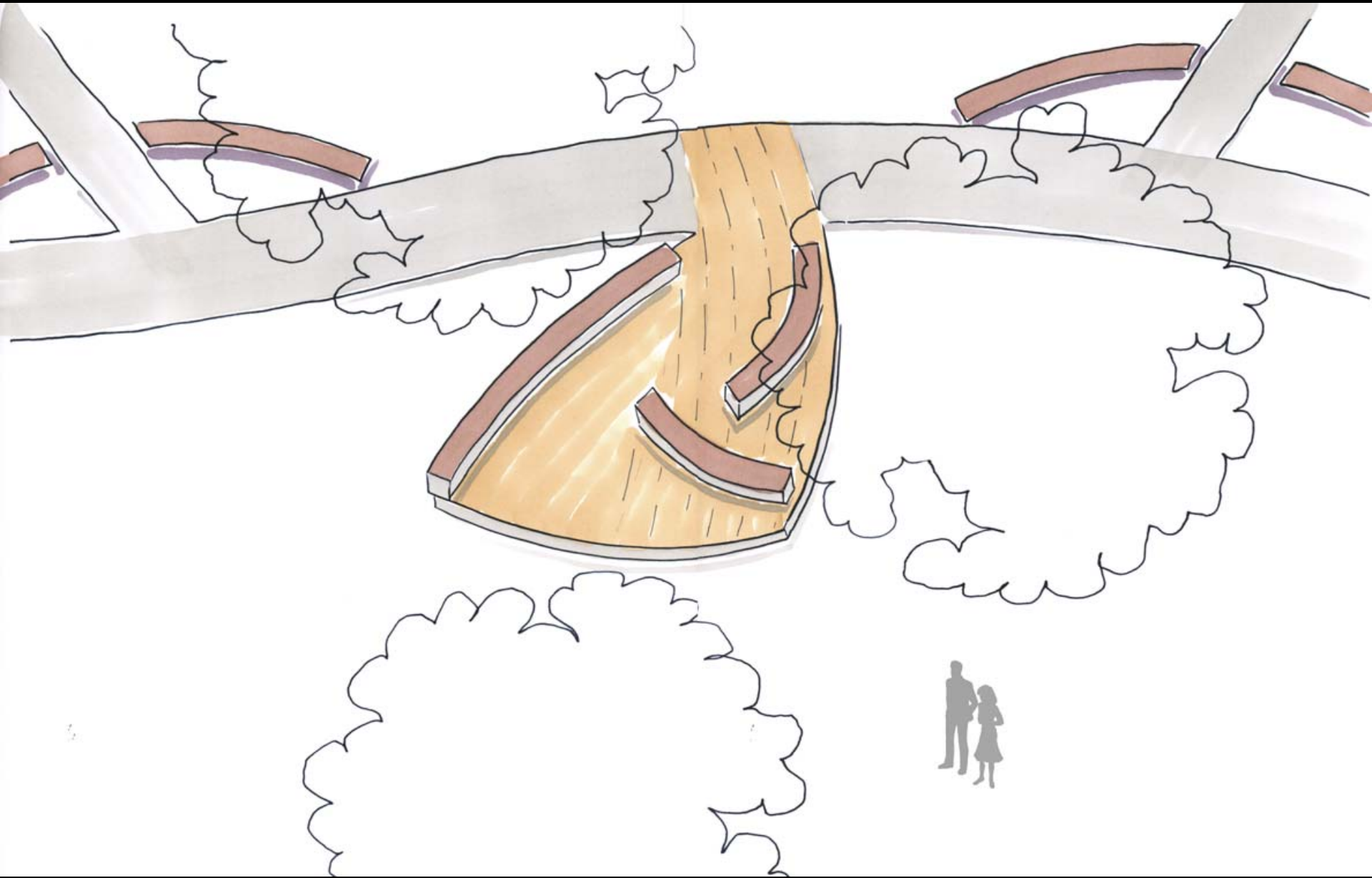
Plaza Examples



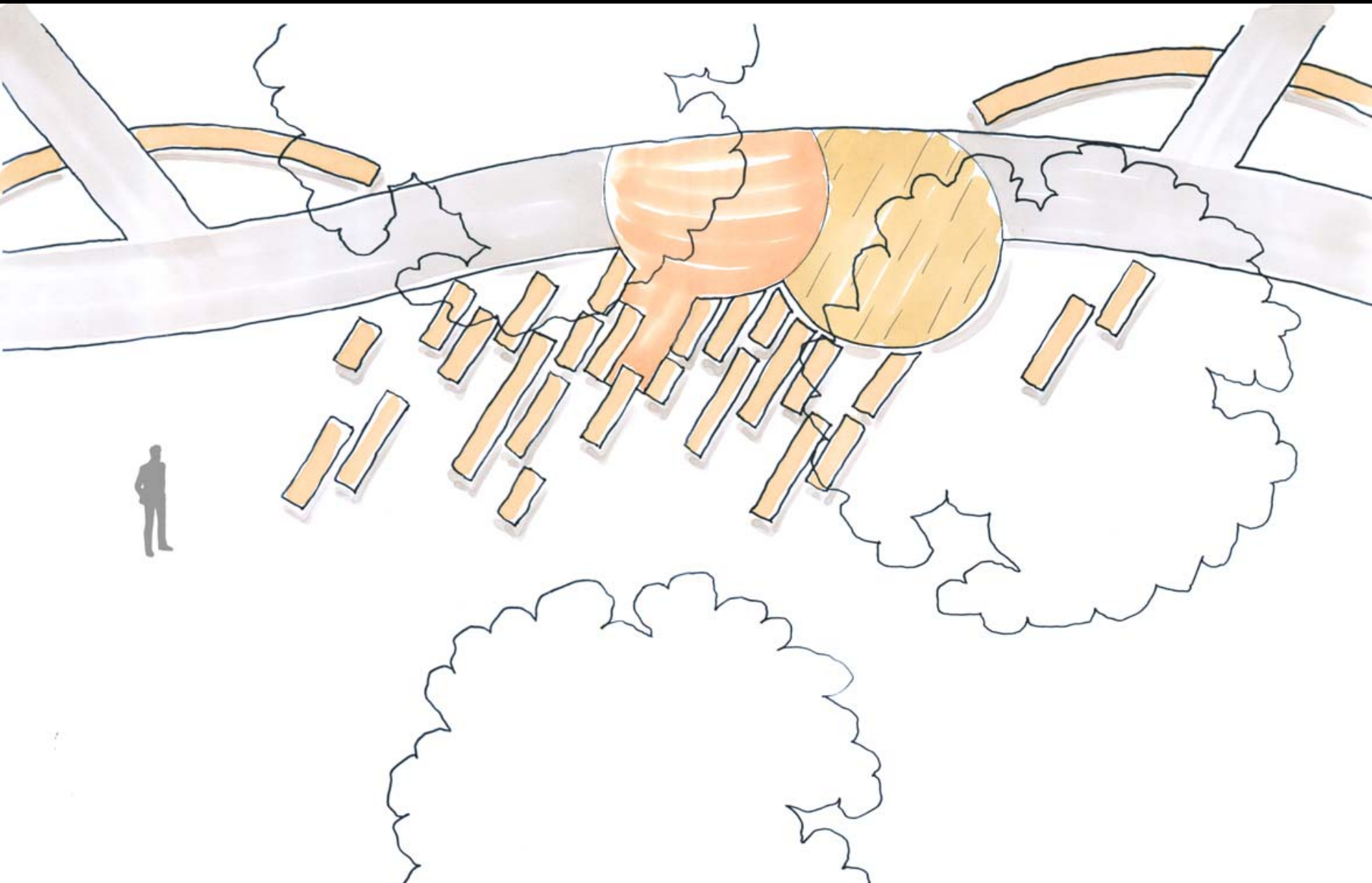
Plaza Example #1



Plaza Example #2



Plaza Example #3



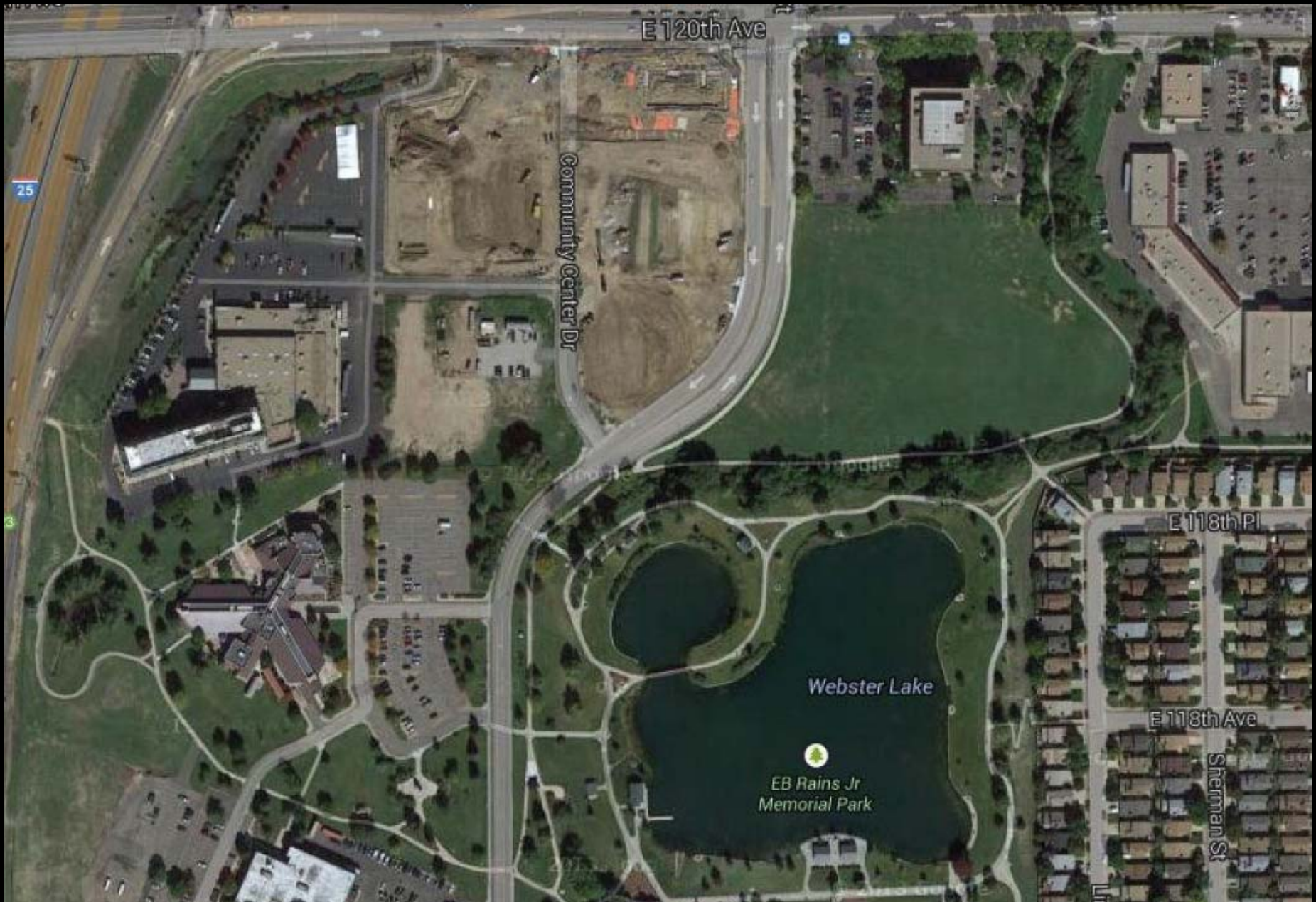
Plaza Example #4



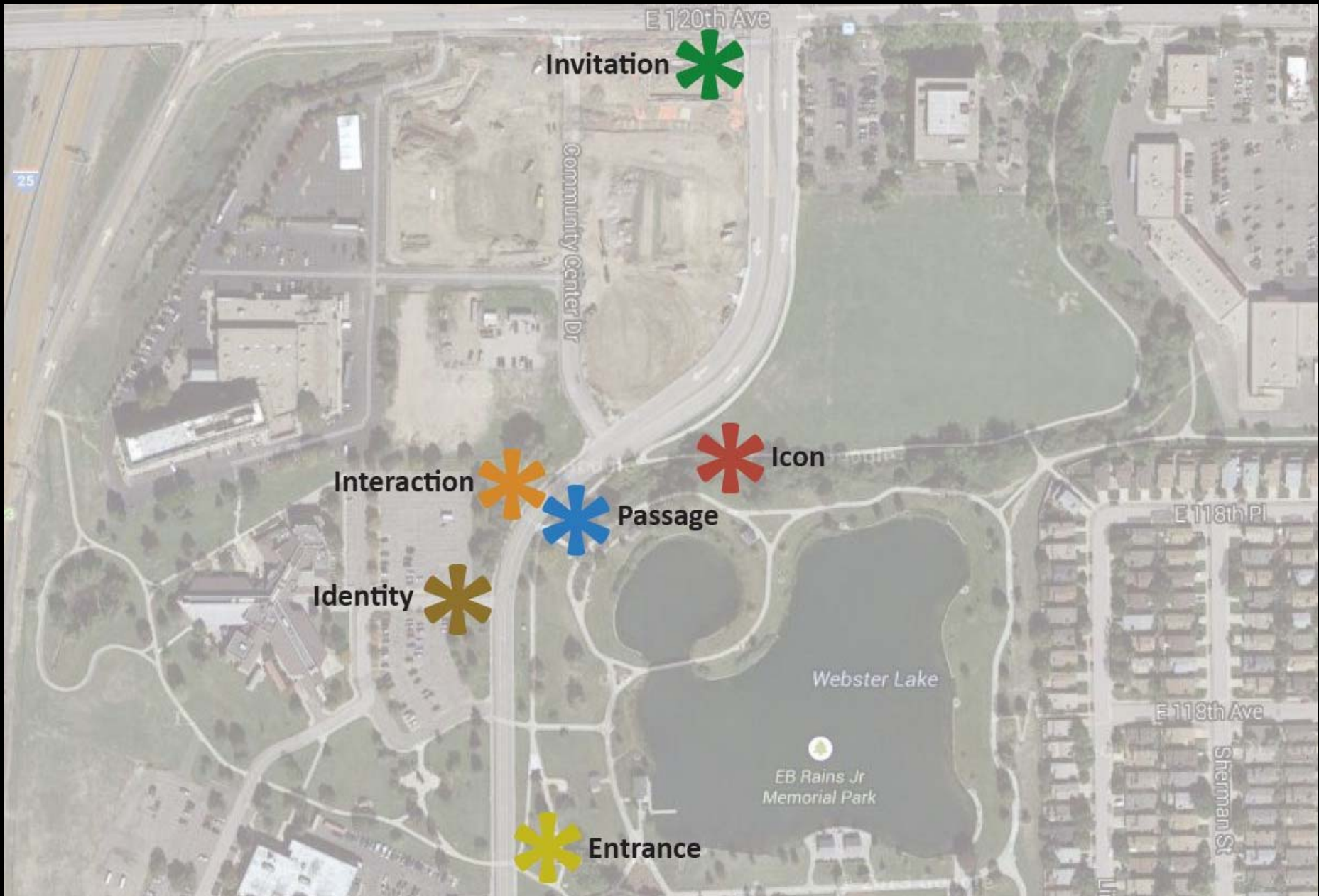


<u>Zone</u>	<u>Area</u>
1	6,800 ft ²
2	12,600 ft ²
3	6,400 ft ²

THE CITY OF NORTHGLENN MAKES NO WARRANTIES, EXPRESSED OR IMPLIED CONCERNING THE ACCURACY, COMPLETENESS, RELIABILITY OR SUITABILITY OF THIS DATA. THE CITY OF NORTHGLENN DOES NOT ASSUME ANY LIABILITY ASSOCIATED WITH THE USE OR MISUSE OF THIS INFORMATION, AND THE USER FURTHER AGREES TO HOLD THE CITY OF NORTHGLENN HARMLESS FOR ANY LOSS, DAMAGE, OR INJURY ARISING OUT OF THE USE OF THE GIS MAP AND ANY OTHER RELATED DOCUMENTS.



Aerial Site Photo



Concept Sketch