

**PUBLIC WORKS DEPARTMENT
MEMORANDUM #2018 - 11**

DATE: February 26, 2018
TO: Honorable Mayor Joyce Downing and City Council Members
FROM: James A. Hayes, AICP, City Manager *JH*
Robert Webber, Operations Manager *RW*
SUBJECT: **CR - 40**
Capital Equipment (2018) Purchase

PURPOSE

The City Council will be considering a Resolution for the purchase of the Valve Turner replacement truck.

BACKGROUND

The current Valve Turner truck is a 2006 Chevy 3500 with a vehicle rating of 15. Fleet replacement criteria recommend that any vehicle with a rating of 10 or higher should be designated for replacement. This vehicle will be equipped with a new valve turner which will allow Public Works to efficiently and safely exercise valves throughout the city reducing water valve breaks and more quickly address necessary valve shut offs during emergencies or when work on water lines is required.

BUDGET IMPLICATIONS

Public Works Department budgeted \$65,000 for the purchase of the new Valve Turner Truck. Korf Continental was the awarded bidder on the State of Colorado Bid award # 2018-0071.

Equipment	Budget	Actual Cost	(Over)/Under Budget Amount
Ford F350 4x4 Ext. Cab with Utility Bed and Components	\$ 65,000	\$ 54,158	\$ 10,842

SCHEDULE/TIME IMPLICATION

Pending Council approval a Purchase Order will be sent to the vendor.

STAFF RECOMMENDATION

When considering the make/model, staff examined functionality, safety features, availability of required components and local service.


Staff recommends approval of the Resolution.

STAFF REFERENCE

Robert Webber, Operations Manager webber@northglenn.org 303.450.4077

ATTACHMENTS A: Korf Continental Award Sheet

IT IS MY PLEASURE TO PRESENT THE FOLLOWING PROPOSAL



Ted Baca, Fleet Sales Mgr.
970-330-6117: Direct Line
970-692-8324: Direct Fax
tedb@q.com : e-mail

JULESBURG: Ford & Lincoln YUMA: Chevrolet-GMC-Buick-Chrysler-Dodge-Ram-Jeep

m11v1
m8v2
m17v3

TO: Jeff Wallace City of Northglenn 720-987-7976
jwallace@northglenn.org

UNIT # JEFF

PICTURES BELOW WHEN OPTION CODE IS HIGHLIGHTED IN BLUE

F4	Colorado Price Agreement 201800000000071 : 2018 Ford F350 4x4 Ext Cab PU, 6.5' PU Box, 5)LT245/75R17E ASR, 6.2L V8 FFV, 34 gallon tank, 10300 GVWR, AM/FM, 4 Wheel ABS, SOF hubs, 6 speed AOD, 3.73 Axle ratio, rear step bumper, Air Cond., Rubber floor covering, 40-20-40 cloth seat (Base Bid Spec)	\$	27,571.00
213			
X3B	Extended Cab 8'Bed	\$	155.00
TBM	245/75Rx17E All Terrain Tires	\$	165.00
66S	6)OEM Upfitter Switches in roof console	\$	165.00
90L	Power Windows,Locks,Heated Mirrors, Keyless Entry	\$	915.00
52B	Trailer Brake Control with 7 Pole RV type Plug	\$	270.00
X3E	Limited Slip Rear Differential 3.73 Ratio w/Gas	\$	390.00
43C	110 volt/400 watt AC outlet in Instrument Panel (may require 67E Alternator)	\$	75.00
67E	240 Amp Alternator Gas engine only	\$	85.00
WTF	WeatherTech Floormats front 2)Pcs	\$	128.00
WTR	WeatherTech Floormat Rear	\$	118.00
CSC	Seat Covers form fit installed Front and Rear	\$	690.00
133	97db Back Up Alarm	\$	342.00
RC2	Reading Classic II upgrade-Now Required for LatchMatic RLM	\$	1,533.00
RLM	Remote Locking LatchMatic (REQ: Classic II) independent of chassis powerlocks	\$	1,037.00
UBR	Reading SL 98" SRW Utility Bed A-A Compartment Configuration w/ rear bumper	\$	5,845.00
BL2	Spray On Bed Liner on Compartment Tops and Loadspace	\$	1,380.00
UG1	Tommy Gate G2 Series 1300# Dual Cylinder liftgate and bumperettes	\$	3,492.00
WLB	Whelen 50" Justice LightBar w/ Traffic Advisor & PCCS9NP Controller Full Amber	\$	3,662.00
UHR	Cab Protector 1.5" Box tubing/Expanded Metal window and light bar mounts	\$	1,335.00
4AS	LED Flasher Surface mount Amber lights 2)Grill 2)Rear of Compartment Side-Pak	\$	1,244.00
GSB	Black PowderCoated Cab Length GripStrut "SafeStep" Running Boards(see below)	\$	847.00
EZ7	Drawer Pack Installed Curbside (See below)	\$	2,714.00
Z1/1S	White exterior/ Gray Interior		No Charge
DVY	Delivery		No Charge
DTW	5 year 100,000 mile powertrain warranty diesel/5 year 60,000 on gas		No Charge
	Total Net 20 days CREDIT CARD PAYMENTS NOT ACCEPTED	\$	54,158.00

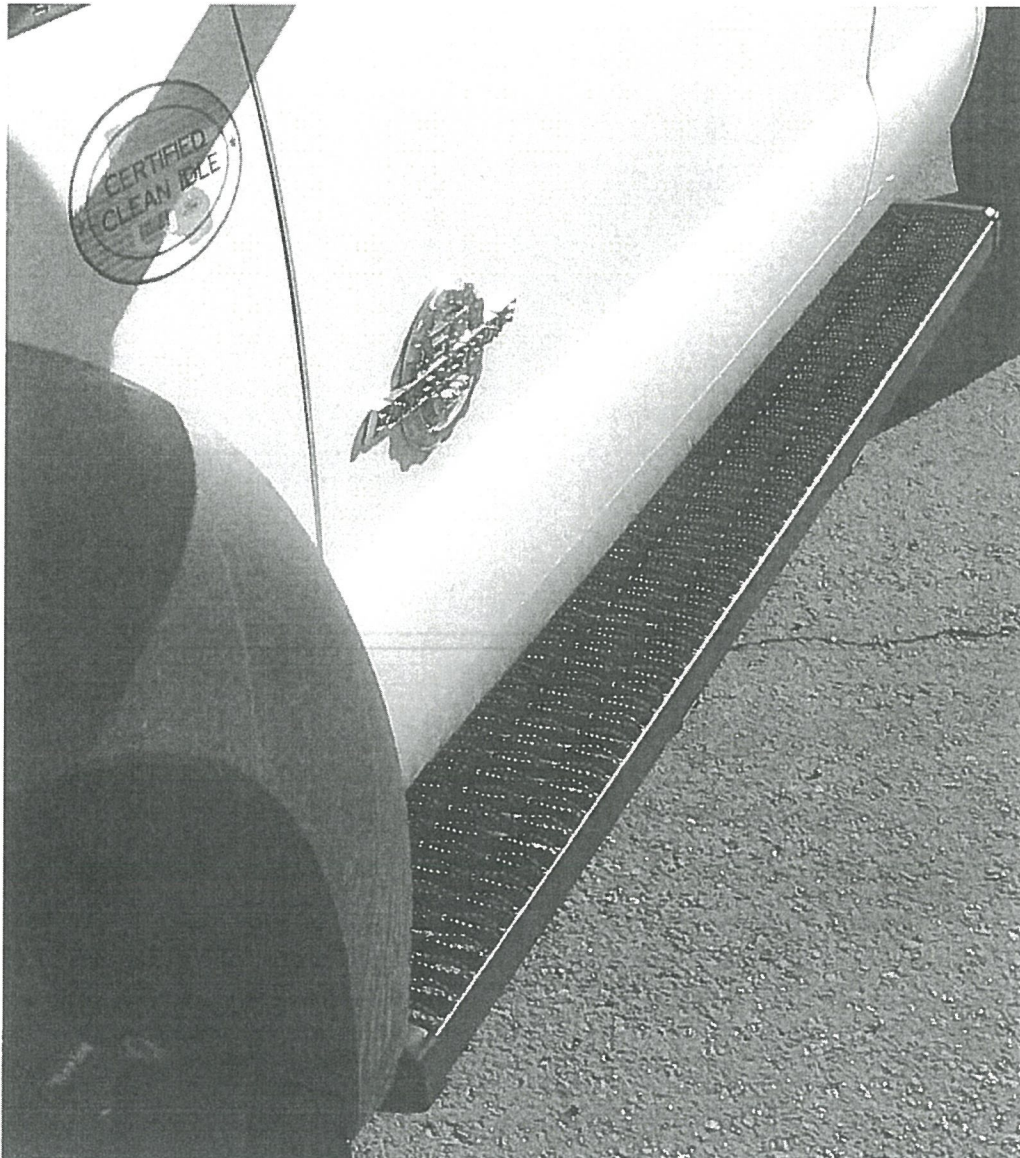
Note: Delivery charges may apply unless picked up locally. Also as Stated on the BID: the Dealer **Cannot Control** delivery time. We will attempt to deliver in the specified 60-120 day period but equipment and/or component availability are beyond our control. Make note delivery date on your PO to finalize acceptance
NOTE: Fuel Tank Size may Vary by Cab Configuration, Engine and Wheelbase

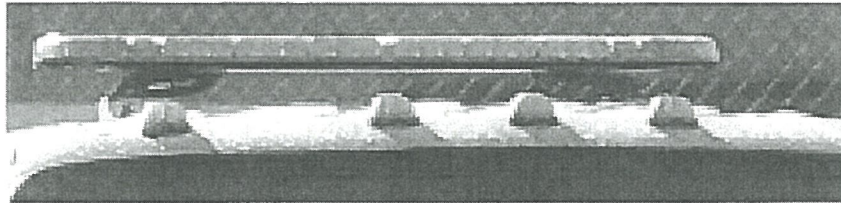
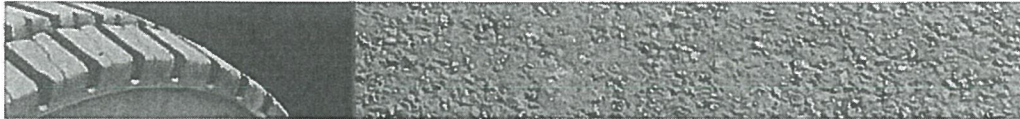
Available Options not included in Base QUOTE Price

X3B	Extended Cab 8'Bed	\$	155.00
F3B	Regular Cab 8'Bed		
W3B	CrewCab Specify 6'6" bed or 8' Bed		
TBM	245/75Rx17E All Terrain Tires	\$	165.00

66S	6)OEM Upfitter Switches in roof console		\$	165.00
90L	Power Windows,Locks,Heated Mirrors, Keyless Entry	REG/EXT CAB	\$	915.00
90L	Power Windows,Locks,Heated Mirrors, Keyless Entry	CREWCAB	\$	1,125.00
99T	6.7 Litre V8 PowerStroke Diesel Engine may reduce Tank size to 29 gallon		\$	7,677.00
52B	Trailer Brake Control with 7 Pole RV type Plug		\$	270.00
X3E	Limited Slip Rear Differential 3.73 Ratio w/Gas		\$	390.00
X3H	Limited Slip Rear Differential 3.31 Ratio w/Diesel		\$	390.00
91M	SYNC Bluetooth: REQUIRES 96V		\$	365.00
96V	XL Value Pkg:CD Player-Cruise-Chrome Bumper(s)& center caps on SRW		\$	720.00
62R	PTO Provision (required for PTO Installation-N/a as post production installation)		\$	280.00
18A	Upfitter Interface module (may be required for equipment installation)		\$	295.00
86X	Diesel Engine Shutdown available in 5,10,15,or 20 minute intervals		\$	250.00
43C	110 volt/400 watt AC outlet in Instrument Panel (may require 67E Alternator)		\$	75.00
67E	240 Amp Alternator Gas engine only		\$	85.00
4CS	Whelen Amber Surface Mount Strobes as on option to 4AS		\$	1,598.00

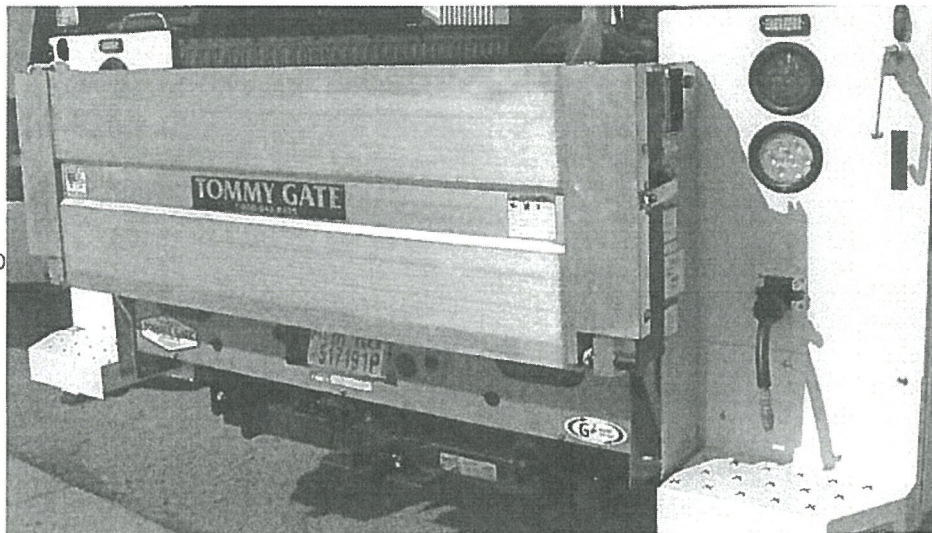
GSB





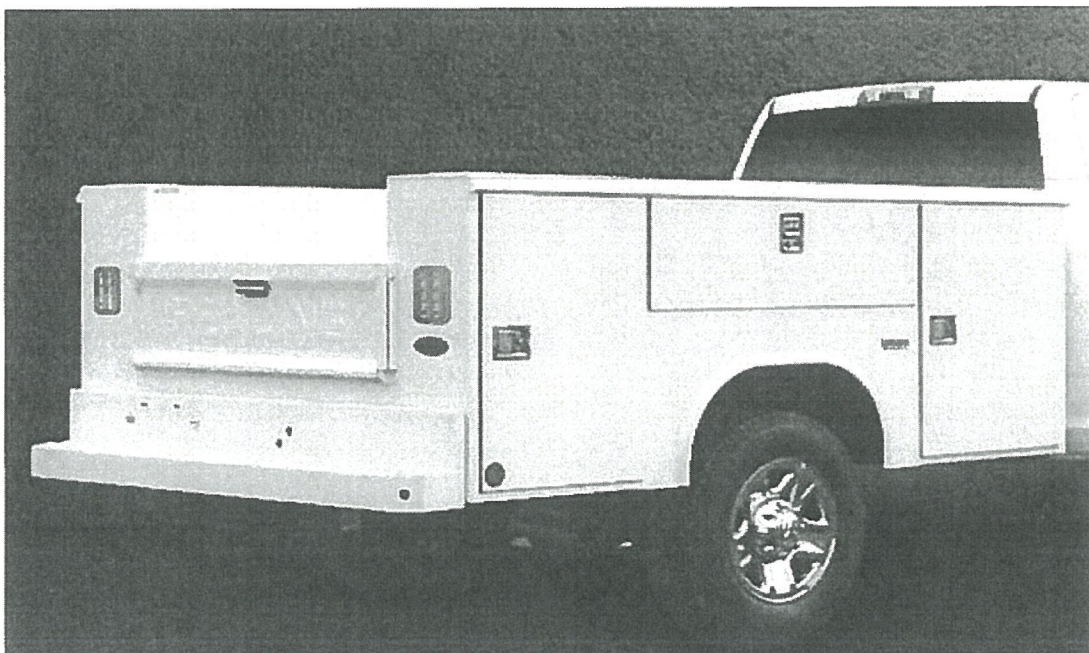
WHELEN
LIGHT BAR
ALL AMBER
WITH REAR
TRAFFIC
ADVISOR

UG1
LIFTGATE
SHOWN
WITH
OPTIONAL
(not incl)
ALUMINUM
AND
GALVANIZED
FEATURES



ALSO
NOTE THE
SURFACE
MOUNT
STROBES
4CS
WHELEN
SHOWN

Reading
Classic II



Galvanized adjustable shelves are standard

CSC



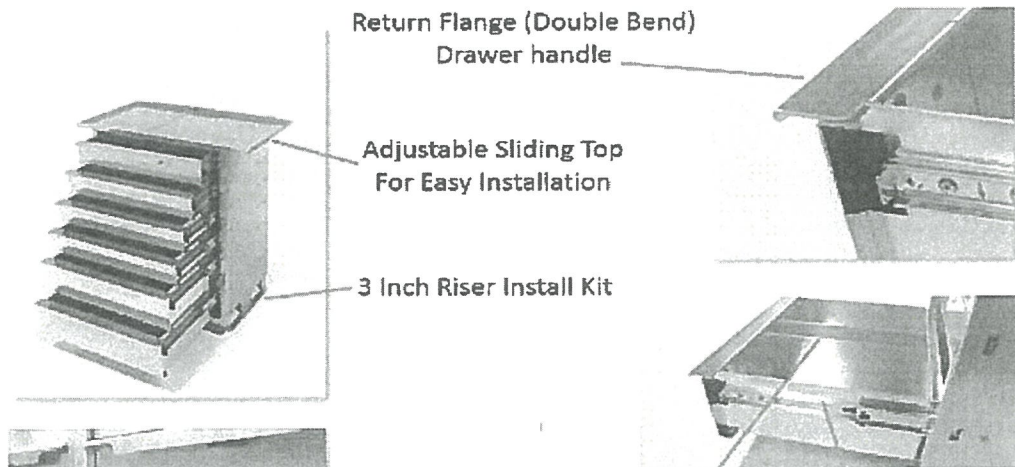
EZ7 Drawer Pack Description

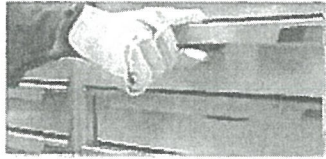
7 Drawer unit designed to fit in either front compartment, Aluminum Construction with 250 lb capacity slides. 3" riser at bottom to assure the bottom drawer will clear cabinet door frame and reduce "pinching" potential.

This custom unit will be made to order with:

- 5) 3.5" Tall x 12" Deep upper drawers
- 1) 5" Tall x 8" Deep lower drawer
- 1) 7" Tall x 8" Deep bottom Drawer

Please note the 8" deep drawers are necessary due to the lower box at the bottom of the front compartments required for the front chassis spring hanger





EZ Latch One Handed
Opening and Closing



Adjustable Dividers

200 lb. and 500 lb.
Capacity Drawer Slides

PLEASE NOTE: this sample picture is NOT the quoted drawer pack configuration

SPONSORED BY: MAYOR DODGE

COUNCILMAN'S RESOLUTION

RESOLUTION NO.

No. CR-40
Series of 2018

Series of 2018

A RESOLUTION TO AUTHORIZE THE CITY MANAGER TO ISSUE A PURCHASE ORDER TO KORF CONTINENTAL FOR A TOTAL AMOUNT NOT TO EXCEED \$54,158 FOR THE PURCHASE OF ONE VALVE TURNER TRUCK

BE IT RESOLVED BY THE CITY COUNCIL OF THE CITY OF NORTHGLENN, COLORADO, THAT:

Section 1. The City Manager is hereby authorized to issue a Purchase Order to Korf Continental in an amount not to exceed \$54,158 for the purchase of one (1) 2018 Ford F350 4x4 Valve Turner Truck for the Public Works Department.

DATED at Northglenn, Colorado, this ____ day of _____, 2018.

CAROL A. DODGE
Mayor

ATTEST:

JOHANNA SMALL, CMC
City Clerk

APPROVED AS TO FORM:

COREY Y. HOFFMANN
City Attorney